

THAMES DITTON TODAY

THAMES DITTON • WESTON GREEN • EAST MOLESEY



THE MAGAZINE OF THE
THAMES DITTON & WESTON GREEN RESIDENTS' ASSOCIATION

W I N T E R 2 0 2 1

St Nicholas Road | Thames Ditton | KT7 0PW



SQUASH
4 STUDIOS
POOL
GYM



SAUNA
NURSERY
CRECHE
SPA



COLETS HEALTH & FITNESS
A **HEALTH CLUB**
LIKE NO OTHER

Not-for-profit + independent

Short-term options available

New members welcome

Call today to arrange a tour

020 8398 7108



@COLETShealth





THAMES DITTON TODAY

Published quarterly since 1970

Editorial Team

Libby MacIntyre & Sandra Dennis
editor@residents-association.com

Magazine Design

Guy Holman
14 Hayward Road, KT7 0BE
020 8398 1770

Distribution

David Youd
6 Riversdale Road
Thames Ditton KT7 0QL
020 8398 3216

Advertisement Manager

Verity Park
20 Portsmouth Avenue
Thames Ditton KT7 0RT
020 8398 5926

Contributors

You are welcome to submit articles or images. Please contact the Editorial Team well in advance of the next deadline February 5

Advertisers

Thames Ditton Today is delivered to an influential 5000 households throughout Thames Ditton, Weston Green and East Molesey. Contact Verity Park for rates for full page, half and quarter page advertising.

In this Issue:

News from the Residents' Association	7
Update from Nick Darby, Surrey County Councillor	13
Update from your Residents' Associations' Councillors at Elmbridge Borough Council	14
Who do you think you are? Jane Scott Ellingham	17
Our riverside and its place in the Thames Landscape Strategy ...	19
10th Anniversary of the High Street Christmas tree lights	21
Winters past, memories from Elmbridge Museum	23
An inspired work of community art	24
Take time to relax at Milbourne Pond	27
Thames Ditton Flooding Surveys	28
Old Cranleighans ten years of youth rugby	29
Inspiring people to 'Move it or Lose it'	31
Esher and Dittons Youth Orchestra	33
Meet your distributors – Diana Jespersen	35
Celebrating a poster boy for a generation with a new Blue.....	37
Autumn crossword solution	42
Winter crossword	43
Services, Clubs, Societies and Groups.....	44
Theatre in Thames Ditton	46

Cover credit: Andrew Pratt

www.residents-association.com

Officers and staff of the Association are volunteers, but we must fund costs of this magazine, administrative and election expenses, and other expenses such as spring bulb-planting and village Christmas trees. The subscription is only £5 per household. If you can contribute more, please do so. Subscriptions can be paid via our website www.residents-association.com; subscriptions (in an envelope please) may be left at Boots Pharmacy, 14 High Street, Thames Ditton or Thorkhill Road Pharmacy, 94 Thorkhill Road, Thames Ditton. Or mail to Membership Secretary Peter Haynes at 6 Onslow Gardens, Thames Ditton KT7 0JJ. Thank you.

DanceCraft
M&M

"We believe that by encouraging our pupils to love dance and enjoy their classes it will not only be exercise for the body but for their hearts and minds too."

Specialists in Dance & Performance training for Pre-school to Senior School aged children.

Classes in and around Esher.

Contact: Maria at mias33@hotmail.co.uk
Call or text to: 07800 860898
or visit our website www.mmdancecraft.com

PAINTERS & DECORATORS

We are residential painters and decorators with 20 years experience, we offer wallpapering, painting and paint effects for internal and external decorating

We work in a clean and efficient manner, causing minimal disruption in your home and come highly recommended

Contact Clive Hogg
to discuss your
decorating needs

020 8339 0712

m: 07957 582296

e: clive.hogg.ch@gmail.com



15 Hampton Court Avenue, East Molesey, Surrey, KT8 0BG

THE Green OUTDOORS

TREE CUTTING / PRUNING
HEDGE CUTTING
GARDEN SERVICES & CLEARANCE
TREE PLANTING / STUMP REMOVAL
PRESSURE WASHING
& MORE

CALL 07745145433
--- Free Quote & Advice ---



THAMES DITTON AND WESTON GREEN RESIDENTS' ASSOCIATION

About the Association

Founded in 1934 our Association is a strong, locally based non-party-political organisation concerned with protecting the amenities and furthering the interests of residents. We work to preserve and enhance the best in our attractive environment and the quality of life of everyone in our community.

Through regular meetings, social activities, our magazine and website we keep in touch with residents' views and we raise and spend funds for the benefit of the community, from tree and bulb planting to contesting unacceptable development projects.

With six Residents' Association Councillors covering the two electoral wards we have a strong voice on Elmbridge Borough Council working with other Residents' Association Councillors to ensure that decisions are based on the needs of local communities and on good management rather than on party politics.

Our Residents' County Councillor, Nick Darby, represents our views at Surrey County Council.

President: Martin Wilberforce

7 River Avenue,
Thames Ditton 020 8398 4732

Vice President: Ruth Lyon,

11 Riversdale Road,
Thames Ditton 0208 398 3396

Vice President Tannia Shipley,

27 Lower Green Road, Esher 020 8398 2484

Surrey County Councillor: Nick Darby,

12 Basing Close, Thames Ditton 020 8398 2382

Thames Ditton Borough Councillors

Alex Batchelor,
12 Hayward Road,
Thames Ditton 07710 943140

Caroline James,
Laurel Cottage, 20 High Street,
Thames Ditton 07970 672723

Karen Randolph,
Deepfield, Giggs Hill Road,
Thames Ditton 020 8398 5005

Hinchley Wood & Weston Green Borough Councillors

Gill Coates,
The Oaks, Orchard Gate,
Esher 020 8873 3040

Janet Turner, 2 Montgomery Ave,
Hinchley Wood 020 8398 1565

Nigel Haig-Brown
53 Heathside, Esher 020 8398 4060

Officers

Chair: Graham Cooke
23 Ashley Road, Thames Ditton 020 8398 8509

Vice-Chair: Libby MacIntyre
24 High Street, Thames Ditton 020 8398 5534

Hon. Treasurer: Christa Silverthorne
62 Thorkhill Road, Thames Ditton 020 8398 7101

Hon. Secretary: Florian Traub,
33 Portsmouth Avenue, Thames Ditton 020 8224 2880

Membership Secretary: Peter Haynes
6 Onslow Gardens, Thames Ditton 020 8398 6019

Conveners of Sub-Committees

Health and Community: Karen Randolph (see above)

Planning: Rhodri Richards,
Ditton Cottage, Giggs Hill Road,
Thames Ditton 020 8398 4962

Highways, Drainage: Andrew Roberts,
1 Boyle Farm Road, Thames Ditton 020 8786 6882

Flooding Tony Thompson,
Willow End, River Bank, Thames Ditton 07736 677671



THE NEXT RESIDENTS' ASSOCIATION OPEN MEETINGS ARE

Tuesday February 15, 8pm – Vera Fletcher Hall

Tuesday March 22, 8pm – Vera Fletcher Hall

ALL WHO LIVE OR WORK LOCALLY ARE WELCOME

This advert
has no bleed and
isn't the right size
so fit as best as
possible



EMBERCOURT ROAD • THAMES DITTON

SIX BEAUTIFULLY DESIGNED 3-BEDROOM HOMES

Contact selling agent for details

020 8398 9696

sales@aldouscraig.co.uk

Computer generated illustration indicative only

News from the Residents' Association to end November



Christmas Lights in the High Street

How time flies, 2021 marks the 10th anniversary of the little Christmas trees and lights adorning Thames Ditton High Street (see article on page 21). Sadly there is no Christmas Fair this year due to the pandemic, however the High Street will be full of festive cheer and the retailers are looking forward to welcoming you all.

The tradition of lighting the High Street goes back to 1975 when the RA first put up a village Christmas tree with lights. The tree occupied a number of different locations, starting on the roundabout in the middle of the village, then moving to outside the current antique shop before coming to rest on the Fountain roundabout.



RA Christmas tree tradition, started 1975

Remembrance Sunday



Remembering the fallen

There was a large turnout of people paying their respects on Remembrance Sunday. RA Councillor Gill Coates and RA Vice President Tannia Shipley laid wreaths at the Weston Green War Memorial at All Saints Weston. RA Councillor Alex Batchelor and RA Chairman Graham Cooke laid wreaths at the War Memorial on Giggs Hill Green. Graham commented: *“There was a wonderful turnout of young and old, thank you to the Dittons Scout Group and Ajax Sea Scouts.”*

Thames Ditton Station is a winner

Thames Ditton Station was one of the top three winners in South Western Railway's recent photo competition showing biodiversity at their places of work. The competition winners featured in SWR's magazine, *Staying on Track*.



The winning photo - the Bug Halt

The photo was taken by Scott Cooper, Station Manager for Thames Ditton, Surbiton and Hampton Wick.

Scott works closely with Thames Ditton in Bloom organiser, Tricia Bland, for all the planting each year that takes place on the Thames Ditton station platforms and the TDiBloomers constructed the 'bug hotels' that feature in Scott's photo.

Train service consultation

The RA submitted a detailed response to South Western Railway's (SWR) timetable consultation which can be found on our website at residents-association.com

In summary we have urged SWR to maintain or even increase service frequencies whilst ensuring that the timetable is sufficiently robust to be resilient even when interruptions occur.

We consider that only a high-frequency service will ensure train services remain attractive and enable them to be an environmentally better solution to car usage.

Welcome new shops in Thames Ditton

It is nice to see new retail premises in Thames Ditton High Street and we welcome The Art Gallery to 16a High Street, Dennys Books, a new bookshop at The Annex, 2 Station Road and Thames Ditton Gin to

their new premises by Pip's Path to the car park. Remember that Christmas shopping is a great opportunity to support all our local retailers.



New gin shop by Pip's Path to the car park

Planning

We are disappointed to report that the council's decision to refuse planning permission for a complex of 78 flats on the **Hampton Court Industrial Estate (2019/2005)** has been overturned on appeal.

The Prior Approval application (2021/2556) for the change of use of AC Court from offices to residential use was turned down as the properties failed to meet minimum space standards. We have seen further applications (2021/3595 and 3596) with similar plans, but with flats that do meet these space standards. As this falls under permitted development there is not much we can do to prevent such applications apart from lobbying national government, which we are doing, having had two meetings with Dominic Raab MP to discuss planning issues.

Merrywood

Despite the strong case that common land is sacrosanct, put forward by local Councillors Karen Randolph and Janet Turner, the decision to refuse wider easement access over the commons for

the Merrywood development has been overturned by the full council. This decision requires approval by the Secretary of State.

Aldi

Although Aldi have carried out a community consultation no planning application has yet been submitted for the old Guy Salmon site on the Portsmouth Road. As an Association, we are not against the redevelopment of the site, but feel that it would be better suited to residential rather than commercial use.

Café Rouge, Esher (2021/2814).

An outline planning application has been submitted for this site, bordering Weston Green and Littleworth Common, for a 7-storey building comprising 38 residential units, with commercial premises on the ground floor.



Image from application for Café Rouge site

At the time of writing there have been 210 objections, including one from the RA, largely based on the scale and massing of the proposal, its impact on the surrounding Green Belt, potential traffic issues at an already congested junction, and its impact on the much loved 'White Lady' milestone.

There has been an **outline planning application (2021/3258)** submitted for 30 units on the field on the corner of Summer Road and Hampton Court Way, known locally as 'the pony field'. These plans have received 30 objections so far, with residents concerned about the loss of what is currently

a wooded greenfield site and traffic issues.

Elmbridge council is working towards the final consultation on the **Local Plan** in the new year. Councillors have meetings in their diaries to discuss and review the plan as it develops between now and the end of January.

Exhibition in Thames Ditton Library

Thames Ditton Library is holding a Memorial Exhibition of work by Zelda Glanville in aid of Princess Alice Hospice from December 13 - 18. Zelda lived in the village and touched many local lives as an inspirational teacher. Karen Randolph said: *"As children many of us had a favourite teacher. Well, as adults some of us have been lucky enough to have had our eyes opened to the art of 'seeing' as well as drawing and painting thanks to Zelda's art lessons. The exhibition of Zelda's work at Thames Ditton Library is not to be missed."*

Haircut for Milbourne Pond

In October the RA organised a cutting-back morning around Milbourne Pond to tame the vigorous plant growth that threatened to obscure the pond completely if left unchecked. We are very grateful to the local residents who set to work for a couple of hours, hacking back the overgrowth to make the area much more open and to allow other plants, including wildflowers, to thrive.

The pond area is now more accessible for all to enjoy, especially now with the recent addition of the two hardwood benches close to the pond (see article page 27).



THAMES DESIGN & BUILD

Call us on 020 8398 9252

Email: info@thamesdesignandbuild.com
www.thamesdesignandbuild.com



ARE YOU CONSIDERING AN EXTENSION, LOFT CONVERSION, OUTBUILDING, OR ANY OTHER ALTERATION OR ADDITION TO YOUR PROPERTY?

Thames Design and Build provides architectural design and/or construction services to clients across Surrey, with over 80% of our projects being Elmbridge based.

We offer:

- A free consultation to discuss your ideas and advise you on the possibilities and permissions
- A fixed quote for all stages of architectural work
- A fixed quote for your build – we are equally happy to provide a build quote in respect of your existing designs

We have a large portfolio of clients within Elmbridge, so whatever your plans are, we should be able to show you a comparable completed project.

Please email us at info@thamesdesignandbuild.com or call us on **020 8398 9252**



"We were recommended to TDB for their architectural design service. We liked the clarity of the process and costs, and we were delighted when our plans were approved. We asked three firms to quote for the build, and while TDB didn't come out the cheapest we again felt that we knew exactly what was included and we thought that the price was fair. We expected some stresses during the building project, but the TDB team were great to work with, and ultimately everything was finished on time, and there were no surprise costs. Overall, we couldn't be more pleased". Mrs SM, Surbiton



Ditton Garages, Southville Road, Thames Ditton, KT7 0UL



A team of all ages turned out to give Milbourne Pond a much-needed haircut

Fox proof bins at last

The indefatigable organiser of the Albany Reach Litter Pickers, Nell Hickman, said she is “*thrilled*” to see that six brand-new fox proof litter bins have been installed at Albany Reach.



Fox proof bin on Albany Reach

Dastardly dog poo

However, the wonderful litter pickers across Thames Ditton and Weston Green are reporting a positive deluge of (full) dog poo bags abandoned across the villages. They found them littered around bins and even hanging in trees.

Please, please dispose of your dog poo bags correctly. If necessary, take them home and put them in your general rubbish bin.

Croquet Club ‘Return to Play’ success

Ember Croquet Club, Grove Way, Weston Green has rounded off a successful season and has made full use of the club's Sport England / National Lottery 'Return to Play' grant to enhance its facilities and encourage existing and new members to return to playing safely this season.

Local social groups, new to croquet, have come along throughout the summer, having fun learning the basics and enjoying informal coffees, drinks and BBQs in wonderful surroundings.

Local club member Louise Russell said: “*If you enjoy being outdoors and would like to try a game of croquet then look out for our taster sessions early next year. It is great fun for all ages and abilities.*” For more information contact croquet@embersportsclub.org.uk



Croquet is for all ages

Lunching to combat loneliness

All Saints Weston church continues to offer a popular monthly Community Lunch from 11 30 - 2pm on the last Wednesday of every month. The next one will take place on Wednesday December 29. Anyone living in and around Weston Green is welcome to

come along. Please contact Alison Cruthers on 07957 347170 or email alisoncruthers@yahoo.co.uk if you would like to know more or to book a place.

Also do look on the website for details of the legendary Burns Night Supper. Back on January 22 by popular demand. (See website: allsaintsweston.com)

Thank you for a year of ‘Vaccination Volunteering’



On December 19, 2021, the surgery at Giggs Hill will have been vaccinating patients against Covid 19 for one year.

Thank you to everyone involved and particularly the wonderful band of volunteers who support staff and patients week after week.

We have seen a real community spirit to inspire us in difficult times. Thank you.

Dates for your diary

Memorial Exhibition of work by Zelda Glanville

Thames Ditton Library
13 - 18 December

Exhibition of Art Work and refreshments at St Nicholas Church Hall

Wednesday January 12,
10.00 am – 12.00 (see article page 24)

Farmers’ Market

Mercer Close Car Park (opposite the Library), fourth Saturday of the month from February

Weston Green Litter Pickers

Meet at Marneys pub on the first Saturday in the month at 10.30am

Thames Ditton Litter Pickers

Meet in Thames Ditton Tennis Club car park third Saturday of the month at 10.45

All Saints Weston Community Lunch

from 11 30 - 2pm on the last Wednesday of every month. To book in, contact Alison Cruthers on 07957 347170 or alisoncruthers@yahoo.co.uk

All Saints Weston Burns Night Supper

January 22
see website: allsaintsweston.com

Esher and District Local

History Society

March 19, The Origins of Cobham with Dr David Taylor 2.30pm at Holy Trinity Church Hall, Claygate. www.edlhs.co.uk

Residents’ Association

www.residents-association.com or follow us on Twitter @TDresidents

Update from Nick Darby, Surrey County Councillor



I will begin my post Remembrance Day thoughts with thanks to a number of those who work unstintingly for our community in the Dittons. First, those who turn out regularly for the various litter picking groups, where in one case I am trying to source extra equipment. Then those involved in looking after our station - Thames Ditton in Bloom. Then the Boomerang Bag Scheme - extra sewing machines are on order. All participants work hard, usually behind the scenes and unsung, other examples being the food bank collections and the volunteers at the local vaccination Centres. There are of course many others, forming the glue which keeps us together.

On the other hand, I find it very hard to fathom how it is somehow OK for anyone to destroy the covering to the cycle racks by Thames Ditton Station, the second instance of this around bonfire night. Streetsmart did a great job of removing the remains. It is very sad that the last community gesture of my late predecessor Peter Hickman in using his 'highway allowance' is treated in this way.

Surrey Highways has undergone a large-scale reorganisation. It remains to be seen precisely how this will affect the pothole and repair service we receive. My very grateful thanks to those officers I have worked with over the last few years, doing their very best with limited resources. I hope that by the time you read this the recent twice daily drain clearance on Station Road towards the George & Dragon will have been dealt with, as also the broken BT cover on the raised pavement nearby.

For the next Surrey County Council meeting



Surrey County Councillor, (The Dittons) Nick Darby

our Group will be putting forward a motion to start a register of utility company defects, with regular meetings with those companies to assess progress and bring pressure to bear. Further down the line it would be a question of tougher enforcement legislation, for example to cover sewage discharges into the Thames.

Further on the horizon there are plans for alterations to Hampton Court Bridge next year, and the replacement of the 130-year-old bridge on Esher Road as one heads to East Molesey.

And finally, I am keen for the Thames Ditton 20mph Zone to be refreshed, both with repeater signs and clearer road markings and ideally also to extend the area slightly. Road and pedestrian safety should be to the fore, quite apart from the climate change issue and encouraging cycling!

May I wish everyone all the very best for Christmas and for 2022, hopefully something to cheer in these difficult times.

**Nick Darby,
Surrey County Councillor for the Dittons**



Update from your Residents' Associations'

Thames Ditton Ward



Karen Randolph
TDWGRA



Caroline James
TDWGRA



Alex Batchelor
TDWGRA

Fox-proof bins - update

The long-awaited fox-proof bins are being rolled out around the borough's green spaces and are already in place at Albany Reach, much to everyone's delight. We were disappointed to discover the Council's plans for the bins did not include Ditton Common either side of the Hampton Court Way but Cllr Coates took this up with them and has succeeded in getting eight new bins ordered for Ditton Common as well, although they will arrive a little later.

We are also pleased to report that we got the Watts Road (Thames Ditton) bin reinstated, the disappearance of which had caused concern.

Garden waste catch-up collection

The HGV driver shortage looks like it will be with us for some time, but the RA/Lib Dem administration fulfilled its promise to residents to try to arrange a catch-up collection of garden waste bins in early November. We will keep up the pressure to try to arrange similar one-off collections, when possible and can reassure everyone that the aim is to reinstate the full service as soon as we can.

Defibrillators in Thames Ditton and Weston Green

Two new defibrillators have been installed at Long Ditton Recreation Ground and Coronation Recreation Ground in Hersham. This brings the number of registered defibrillators in EBC-owned properties to 12 but there are many others dotted around the borough owned by clubs, societies, etc. The ones we know about in Thames Ditton and Weston Green are:

- All Saints Church, Weston Green
- Thames Ditton Library

In an emergency always call 999 and the ambulance service should be able to tell you where the nearest defibrillator is located. But there are tens of thousands in the country that are not registered with the British Heart Foundation, including those listed above. So if your organisation has a defibrillator, we'd love to know about it for our own records so we can put it on our TD&WGRA and HWRA websites and please make sure you add it to the national defibrillator network at bhf.org.uk

Councillors at Elmbridge Borough Council

Hinchley Wood and Weston Green Ward



Gill Coates
TDWGRA



Janet Turner
HWRA



Nigel Haig Brown
HWRA

High Street Planting

The Economic Development team at EBC has secured a government grant from the ‘Welcome Back Fund’ to boost the appearance of local high streets post-Covid. The money will be used to re-do the fixed planters in East Molesey, Hinchley Wood and Esher.

‘Pony field’ planning application

RA Cllrs James and Randolph have promoted planning application 2021/3258 for consideration by the Planning Committee. We are aware of concerns amongst residents regarding the number of dwellings proposed and the impact on a large number of trees on the site. This move will ensure it gets proper consideration by elected Councillors, rather than being a delegated officer decision.

Summer Road/Old Tiffinians

Following a number of concerns raised by residents in Summer Road, Cllr James is lobbying Tiffin School to improve its communication with them and do more to encourage coach companies and parents to park with greater consideration when using the playing fields.

Greenredeem

If you are concerned about the impacts of climate change and want to make some changes to your lifestyle but don’t know where to start, the Council has a new green initiative which can help you. The partnership between EBC, Joint Waste Solutions and Greenredeem provides residents with a new digital platform to encourage waste reduction.

This new platform gives us the tools to make small lifestyle changes that together will empower us as a community to make a big difference.

Greenredeem introduces fun weekly activities (videos, quizzes, competitions, blogs and pledges) suggesting genuinely helpful solutions for how to reduce waste at home and out and about.

Participation earns points which can be redeemed as:

- * Cash donations to charity
 - * Discount vouchers and rewards for you to spend on eco-friendly products
 - * Tickets for the Greenredeem prize draw
- Search *Elmbridge Greenredeem* for details.

Alan Greenwood & Sons

Independent Family Funeral Directors



Latest Jaguar or Mercedes Hearses and Limousines
Quality Service 24 hours a day
Home visit arrangements
Golden Charter Pre-paid funeral plans
We will not be beaten on price



1 The High Street
Claygate
 KT10 0JG

57 Fleece Road,
Long Ditton
 KT6 5JR

13 Molesey Road
Hersham
 KT12 4RN

259 Ewell Road
Surbiton
 KT6 7AA

01372 377 377 020 8398 0012 01932 260 046 020 8399 4455

Visit Our Website for Full Details of Our Services and to View Our Obituaries

www.alangreenwoodfunerals.com

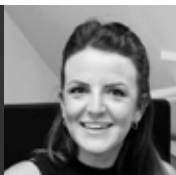
INDEPENDENT, TRUSTED FINANCIAL ADVICE IN THE HEART OF THAMES DITTON

Knight James' are a friendly, local business offering trusted, impartial financial advice.

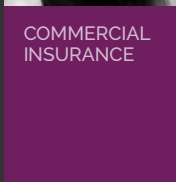
Our experienced team are able to offer advice in the following areas:-

- Mortgage & Lending Services
- Investment & Pension Advice
- Portfolio Management
- Retirement & Tax Planning
- Corporate & Employee Benefits
- Commercial Insurance

Contact us today to find out how we can help to put you on the right financial path.



MORTGAGE SERVICES



COMMERCIAL INSURANCE



WEALTH MANAGEMENT



INVESTMENT & PENSION ADVICE



Call 020 8398 6677
www.knightjames.com

6 Station Road, Thames Ditton, Surrey KT7 0NR



Who do you think you are?

Jane Scott Ellingham



One in ten of us in Britain are researching our family trees, and genealogy is in the top categories for online searches. Family history is more than pedigree charts, censuses, and birthdates. It can give great meaning to our lives, through a stronger understanding of who we are and motivating us to deepen our roots for our children and grandchildren.

Often family stories pass down the generations, with a few photographs if you're lucky. It was in this way that Jane Ellingham (nee Percival) of Thames Ditton was well aware that her grandfather had, from scratch, built a cabin cruiser in his garden in Spencer Road, Molesey. He named it 'Jane Scott' after his mother, and in turn Jane herself was given the same name.

Six years ago, her cousin visited the nearby Sunbury Embroidery Gallery and excitedly rang Jane to tell her, "You must come!" She had discovered the 'War Years' panel - a section of the Sunbury Millennium Embroidery - depicting at its centre the 'Jane Scott', which it claimed had taken part in the 'Upper Thames Patrol' during World War II.

The embroidery was the brainchild of David Brown and John Stamp in celebration of the new millennium. John Stamp (known for his work at Thames Television) designed it, and then calico pieces were cut out to fit the design template. These were then given to volunteers to embroider - some of whom had never embroidered before. Over 150 people participated, later winning the Queen's Award for Voluntary Service in 2019. Working in their own homes, they



The Jane Scott features in the Sunbury Millennium Embroidery

embroidered 'their piece' according to the design instructions. In the scene about the Upper Thames Patrol, members of the Sunbury Embroidery Gallery say that the 'Jane Scott' was featured because the boat was moored at Sunbury, and a photograph was available to the designer for reference. The piece was given to Joann Fuller to embroider (now her legacy, as she is no longer with us). Prompted by Joann's beautifully embroidered panel Jane Ellingham has been discovering a lot more about her family history.



The Jane Scott on patrol

Jane's grandfather, George Frederick Percival, launched his self-made cabin cruiser in 1942 and immediately joined the 31st Middlesex Battalion Home Guard's branch of the Upper Thames Patrol - the UTP. During World War II the Home Guard was Britain's 'last line of defence' against German invasion. It consisted of men who were too old or too young to be conscripted - or they were key workers. Comically portrayed as 'Dad's Army' in the BBC sitcom, the Home Guard did in fact evolve into a well-equipped and well-trained army of 1.7 million men who were readied for invasion, and they performed useful tasks such as bomb disposal and manning of anti-aircraft and coastal artillery, leaving the army to get on with fighting the Nazis.

The UTP was the Home Guard's water-borne unit, and their role was to protect the Thames, its bridges and military training areas from potential invaders and saboteurs. It was set up by the MP for Abingdon, Sir Ralph Glyn, and at its height had 6000 members - mainly Thames water-men but also civilians - including women. The upper Thames was divided into five stretches, each one with a stretch battalion and a local headquarters - usually a riverside pub (hence the UTP's nickname 'Up The Pub'). Jane's grandfather was 2nd in command of the No 2 company, a flotilla that patrolled the 'Stretch E' from Penton Hook Lock to

Teddington Lock.

In his recommendations on 'Captain George Frederick Percival', Sir Ralph Glynn MP wrote: 'No officer of my battalion is a better waterman ... he has shown the highest attributes of an officer ... has a nice sense of responsibility ... and is extremely popular with his men, although a strict disciplinarian' were among the many accolades.

Jane said: "I'd always admired my grandfather for building his own boat, but discovering his involvement in the Upper Thames Patrol, and seeing this enshrined in the Sunbury Millennium Embroidery gives my family and I a great sense of connection with the river and the past."

You can discover more for yourself by visiting the Sunbury Embroidery Gallery in Thames Street for free, and afterwards you can enjoy their delightful cafe or a stroll around the walled garden. For more information visit www.sunburygallery.org



Jane Scott Ellingham and the Sunbury Millennium Embroidery

Julie Royce

Our riverside and its place in the Thames Landscape Strategy



View of Thames Ditton Island and beyond from the river

Thames Ditton's riverfront has changed little over the past century, despite endless attempts from developers to exploit its unique attraction on the banks of the River Thames. Thirty years ago, in partnership with national agencies such as English Heritage, the five local councils including Elmbridge commissioned international landscape architect Kim Wilkie to write a Strategy for the River Thames between Hampton and Kew, explaining the character of the river landscape with proposals for conserving and enhancing it for the next 100 years.

Each reach of the river has its own character. There is a marked distinction between the Kingston/Portsmouth Road reach and the Thames Ditton reach on the Surrey bank of the Thames.

In the description of the Landscape character of the Thames Ditton riverside the Strategy writes: "*at Ditton Field the open space and the trees leave the view (from Hampton Court Palace and Barge Walk) open to the Surrey hills beyond. The group of trees at the southern end of Ditton Field separate the open spaces from the built. Brick factory buildings and boat clubs*

scale down to dense single storey plots on Thames Ditton Island and its side-channel. The fine 19th-century factory buildings and the historic iron bridge, 18th-century Boyle Manor (now the Home of Compassion) and the 17th-century inn create an interesting historic waterfront for Thames Ditton, surrounded by colourful bungalows lining the narrow side-channel.”

The Thames Landscape Strategy looked at the landscape character, historical background, nature conservation, working landscape and recreational elements in each reach and proposed policies for conservation and enhancement.

In Thames Ditton we find all these elements:

- **Open Space** - on the riverbank from Cigarette Island to the Albany Pub where people fish, paddle, swim, moor their boats, picnic
- **Pubs** - the Albany and the Swan
- **Sport** - Kingston Grammar School Boat Club, Dittons Skiff and Punting Club, Ajax Sea Scouts
- **Historic buildings** - the Swan, Home of Compassion, Suspension Bridge to Thames Ditton Island
- **Factory buildings/employment** - Ferry Works Boatyard and Ferry - Taggs Boatyard

Boatyards with their activity and paraphernalia of boat use and repairs continue to bring the river edge alive, provide much-needed work and contribute to the character of the waterfront.

The Thames Landscape Strategy, under its Patron Sir David Attenborough, covers among other things the control of housing heights and their setting back to minimise intrusion into the river landscape and retain the sense of rural green space and it is vital if Thames Ditton is to retain its character as a village on the bank of the Thames where

residents live, work, enjoy their sport and leisure in a rural green space.

In the past 40 years we have worked to keep Ajax Sea Scouts, to provide for new premises for the Dittons Skiff & Punting Club, for Ferry Works to be redeveloped for employment, for the Home of Compassion to be restored and retained as a nursing home, for Taggs Boatyard to be viable and to work to retain the historic village character of the chalet bungalows on Thames Ditton Island and on the riverbank.

We value our riverside at Thames Ditton but it is only through the work of our Residents' Association, Elmbridge Council and the vision and practical support of the Thames Landscape Strategy that we can continue to enjoy it.

Ruth Lyon
(Past Chairman of the Thames Landscape Strategy)

Antique Clock Restoration & Repair

Specialising in Grandfather, Dial, Bracket and Carriage Clocks

Contact: Mark Rowe M.B.H.I
BADA Diploma. Member of the Watch & Clockmakers Guild. West Dean Diploma.



Tel: 020 8605 0331

www.theclockgallery.co.uk

Additional Restoration services available for Watches, Books, Ceramics and Fine Furniture.

Antique Clocks also bought and sold.

10th Anniversary of the High Street Christmas tree lights



The year 2021 marks the 10th anniversary of the 45 little trees twinkling the length of Thames Ditton High Street in the run-up to Christmas. Specially commissioned tree brackets were erected in 2011, a year after the installation of the beautiful lime tree lights, consolidating Thames Ditton village as being the finest place in Elmbridge to see Christmas lights.

Lighting up the High Street at Christmas was the brainchild of Tricia Bland (then Honorary Secretary of the Residents' Association) and she has continued to organise the High Street Christmas lights ever since.

It costs about £2,000 p.a. to put the trees up and take them down, source replacement lights and pay for electrical work on the shops and residences when these need fixing. The hugely popular bi-annual Secret Gardens of Thames Ditton event, organised by the RA, contributes around half of the running costs and the rest is raised from other activities including the High Street shops Christmas raffle. In recent years,

the Thames Ditton Farmers' Market has also made a significant donation from its community fund, to support the High Street and wider community.

Shops and High Street residents each purchase their individual trees from Paull's the greengrocers, who kindly provide them at cost.

Traditionally the Christmas Lights have been switched on during the annual Thames Ditton High Street Christmas Fair. Sadly, this is not taking place this year, so the switch-on was timed to coincide with the weekend of the first Christmas Farmers' Market on November 27. Throughout December they will continue to light up the High Street, inviting everyone in the village to 'shop local' and spend quality time in our wonderful cafes, restaurants and pubs in the run-up to Christmas.

Tricia said that to mark the 10th anniversary she *"Would like to thank all those who have helped her make it such a success, especially Brian and Martin Poulter, who put up the trees, Will Bland (and volunteer helpers) for trimming and dressing the 45 trees with lights, Katie and Connor at Paull's and everyone who purchases their individual trees."* She added: *"Recent lights fund-raising has proved especially challenging due to Covid, and a special thank you is due to Graham Cooke, Chairman of the Residents' Association, for donating the money raised from the sale of his local paintings earlier this year."*



Photo credit Sue Mason

Find out details about local church services on their websites.

All Saints Weston, Weston Green (CoE)
allsaintsweston.com

Our Lady of Lourdes, Thames Ditton (RC)
olchurch.co.uk

St Nicholas, Thames Ditton (CoE)
stnicholaschurch.org.uk

St Christopher's, Hinchley Wood (CoE)
stchristopherschurch.org.uk

St Mary's, Long Ditton (CoE)
stmaryslongditton.org.uk

St Paul's, East Molesey (CoE)
stpaulmolesey.org.uk

turned and painted wooden candleholders

from
british colour standard



love thames ditton
shoplocal

design: www.thesetupdesign.com thames ditton

view
thames ditton

34 High Street Thames Ditton KT7 0RY 020 8972 9706

  @ViewGifts

www.view-gifts.com

Winters Past, memories from Elmbridge Museum



Photograph of Milbourne Pond in winter, showing a rail around the frozen pond, 17 people on the ice, and a row of houses in the background. Taken in 1918.



Black and white photograph of Arthur Read (front), Joseph Sassoon Sassoon (3rd from left) and Louise sassoon (4th from left), skating on a frozen lake in the winter, c. 1895.

An inspired work of community art



Detail from one of the artworks showing the Christmas story, photo credit Emma Palmer

If you pop your head around the door of St Nicholas Church Hall in Thames Ditton churchyard you will be greeted by an inspired community work of art created by more than 40 volunteers called ‘Discover the Word’

Local artist, and active member of St Nicholas Church, Charlotte Bramley, had long thought about creating a special artwork to bring the Bible to life. Although busy doing other things the thought didn’t go away and when finally she suggested the idea to vicar Andrew Cowie, he told her to go for it!

Charlotte’s idea was to bring people together to participate in creating the artwork. She designed five big templates that they could contribute to with calligraphy, weaving, painting, textiles, model making and drawing all part of the display. The next step was to find participants. She put the word out through friends, local artists

and via posters in the village and set a date for the first workshop.

In the church hall, surrounded by materials, paints, cloth, canvases, she had a nervous wait to see who would turn up before people of all ages, including children as young as four, started to show up and get stuck in.

The artwork took shape in fun weekly drop-in sessions until the start of the pandemic brought lockdown and social distancing. Luckily, Covid did not stop the project as people continued to work from home, with Charlotte dropping off materials and templates to people’s doorsteps.

Finally, the project was realised when the artworks were hung in a permanent exhibition in the Hall.

Wonderful local photographer Emma Palmer went along to capture the installation and said: *“The Church Hall is home to the Food Bank Cafe, Parent & Toddler Time,*

kids dance and sports classes and music classes. I honestly feel that these works of art make it completely unique.”

Charlotte reflected on the project saying: “It has been an amazing experience. So many people have been involved, helped and donated materials, textiles, paints and even all our picture frames. I couldn’t have done it without the help of Elaina Mears who has done an incredible job with all the sewing work. And we must thank local framer Alan Cunningham for framing all the pictures

and Phil Lescelles for hanging them.”

On Wednesday January 12, 2022 the Church Hall will be open from 10.00 am to 12.00 specifically for villagers to come to the hall to see the exhibition and to enjoy a cup of tea and cake. There will be no charge but there will be a donation pot for the church.

If you can’t drop in take a look at Emma’s lovely photographs by following the link <https://emmapalmerphotography.pixieset.com/discovertheword/>



Charlotte (left) and Elaina at the installation of ‘Discover the Word’ Photo credit Emma Palmer

WITH THE INCREASING IMPORTANCE OF HYGIENE AT THE FOREFRONT OF OUR MINDS, WHAT BETTER WAY TO AIDE THIS IN YOUR HOME.

THERE CANNOT BE A MORE HYGIENIC WAY TO FLUSH ANY TOILET.

WE ARE OFFERING THIS TOUCHLESS CONVERSION TO ALL PUSH BUTTON OPERATED TOILETS (INCLUDING WALL HUNG OR BACK TO WALL TOILETS).

AND, IF YOUR TOILET CANNOT BE CONVERTED, PLEASE ASK US FOR DETAILS REGARDING REPLACEMENT TOILET SUITES.



Touchless flush sensor

Roca

Touchless Solutions WIPAC

No touch. No compromise.

Commercial & Building

Quick install

Maximise hygiene

Zero contact Maximum hygiene

Wave goodbye to germy old-fashioned flush buttons

- 1. **Eliminates cross-contamination** - No contact with the flush button means no germs are transferred.
- 2. **Easy to maintain** - No moving parts means no wear and tear.
- 3. **Space-saving conversion kit** - Converts your existing flush button to a touchless sensor.
- 4. **Energy efficient** - No need for a separate power source.
- 5. **Water saving** - No need for a separate power source.
- 6. **Touchless hygiene** - No need for a separate power source.

120 TLV

£107

For further information why not visit our website www.tjbathrooms.com

and refer to our brochure, p.400.

You can also contact us directly on 01932 866471

Take time to relax at Milbourne Pond



Relax and enjoy the new benches at Milbourne Pond

You can now spend some relaxing moments on the beautiful new curved benches at the restored Milbourne pond. They are perfect for observing pond life and wildflowers or just chatting to friends. The idea came from the RA's Andrew Roberts, who researched the benches and organised their installation, having seen something similar in Home Park.

Funding was provided jointly by the Residents' Association and the Milbourne Pond Appeal Fund.

Milbourne Pond was restored back in 2018, following several years of research, spearheaded by Andrew, to find the most effective way of bringing back water and life to what had become a dry depression

in Weston Green. That project was also joint-funded by the RA/Milbourne Pond fund, with a matching amount provided by Elmbridge Borough Council's CIL fund (Community Infrastructure Levy).

The pond was dug out so it now taps directly into an underlying aquifer. The pond level still fluctuates between winter and summer as the water table rises and falls, but not enough for it to dry out as it did in previous years. This has allowed more viable pond life to become established.

Vegetation around the pond quickly re-established after the restoration. There is something to see in every season with a lovely display of wildflowers in the summer and the frosty forms of pussy willow in the winter.

Thames Ditton Flooding Surveys



As mentioned in the last edition of Thames Ditton Today, the Residents' Association Flood Group were awarded CIL funding by Elmbridge BC to undertake some riverbank height surveys along the main 'high risk' section from the end of Aragon Avenue to Riversdale Road.

This should lead to plans to raise the lowest points of the river bank to increase flood resilience. In February 2014 the river level reached a height which the Environment Agency says has a one in ten chance of happening in any year. Over the last few winters the river has got close to that level.

Increasing the riverbank height at the low points by at least 30cm, reduces the probability of flooding in any year to a one in twenty chance. Increasing it by at least 60 cm, would reduce it to a one in thirty plus years chance.

The photo top right shows the river height approximately 10cm above a garden at the end of Alexandra Road and some 2.2meters above its normal summer level.

The surveys were undertaken by JPA Consultants using very accurate GPS based equipment and took place on 1 November. This involved measuring riverbank height in the gardens of some 25 houses, Albany Reach apartments, the KGS Boat Club, the Small Boat Club, Skiff and Punting Club and the Albany. Based upon that data, a specialist engineer is developing schemes for each location where the bank was found to be low. A report and action plan will then be produced for discussion with affected residents. We will then have to seek funding for implementation.



Impact of the rivers

The whole exercise is being undertaken in conjunction with the Environment Agency and Elmbridge Borough Council are kept fully informed.

Thanks to all residents that allowed the survey team access to their gardens.

Tony Thompson
RA Flooding Convener

Ten Years of Junior Rugby at Old Cranleighan RFC (OC Rugby).



Ten years of under-ten rugby at OC Rugby

OC Rugby started its 'mini' section in September 2011 and it has gone from strength to strength over the last ten years.

What began with 50 children and 10 coaches training on a Sunday morning has evolved into a junior section with 12 age groups, 120 coaches and more than 800 players, who attend over 85 schools in the local and wider community. The Club is a vibrant magnet for families interested in team sports, and it has clearly earned its reputation as a friendly, inclusive, social focal point for the Thames Ditton area. The rise of OC Junior Rugby has been a fantastic

success story for the local area, the game of rugby and sport in general.

We are a family-orientated community club with a passion for sport. We believe that every player should be able to enjoy rugby in a safe environment, where they can meet friends and develop their personal and multi-sport skills. Our balanced approach permits the players to develop over time, to compete at a level they're comfortable with, and stay in the game for longer and our depth and experience in the age groups underpins these ambitions.

OC Rugby currently welcomes boys and girls aged from 4 up to 16 (Year 11). Age grade mini rugby is non-contact up to the age of 9, with its tag and touch variations, and the full game is slowly and safely introduced after that. At U12, the players move into youth rugby, more competitive games and even have the chance of Premiership Academy trials (U14+). After youth rugby, we ultimately want our players to transition into our senior teams. Our coaches are all volunteers and fully qualified by the RFU. We welcome new coaches every year, who normally arrive with the new batches of U5 and U6 players!

Our 11th season kicked off in September. We now have three training sessions every Sunday during the season. Many of our age groups also enjoy mid-week, rugby-orientated fitness that we maintain all year long.

This season we introduced a 'Mixed Touch' rugby group for the first time, providing a dedicated session to touch rugby for boys and girls. This allows young players to focus on the skills and fitness needed for touch rugby, without the complexity and physical contact of the full game. The club is fully accredited by the RFU and therefore enjoys support from the RFU and Surrey County RFU. Michelle is a parent at the

club and says: *“My three children have loved their OC Sundays. The Club has been so welcoming. Every week they’re here making friends, running around, keeping fit and learning new skills. The Club’s down-to-earth philosophy is just perfect for us.”*

The OC Rugby Club is located just off the Portsmouth Road, between Weston Green and Gigg’s Hill Green, and we share the grounds with the equally successful OC Hockey. Beyond inspiring the values of teamwork, respect, enjoyment, discipline and sportsmanship, we’ve also inspired some great family memories over the last ten years. We look forward to the next ten years and even more memories.


Piers Cushing
Director of Junior Rugby, OC Rugby




OC Rugby currently welcomes boys and girls aged from four up to 16

Launching a new business?

Get off to a flying start with...



- design
- logo design
- stationery design
- web design
- brochure design
- leaflet design
- mailshot design
- advertising design
- display design
- marketing
- print



flycolours.com

call 020 8398 1770

Inspiring people to 'Move it or Lose it'



'Move it or lose it' class in action

There was a cold bite of winter as I walked by the well-known Mr Picton's house on the way to 'La Fontana' Cafe in Thames Ditton village. Sitting at my table I began to think about the true value of friendships. I was meeting an old school friend, Caroline Harrison, who was keen to inform me of her latest project as I have not seen her since she worked as a swimming instructor. She turned up as usual with a glint in her eye. She has always had a natural gift for empathy and connection and I soon discovered that her latest venture was geared towards inspiring the older members of our community.

She has recently completed training in her passion, which is to teach people in the local area fitness for the over 60's with her new "Move It or Lose It!" classes.

Caroline grew up in Hinchley Wood and being the eldest of three girls had a childhood full of activities within our local community such as hockey, swimming, and ballet. She also became an active member

in the school athletics team. After leaving school she then went on to become a holiday rep in France, then followed a career as Commercial Operations Manager at Sky TV before getting married and starting a family - she has lived in Molesey for the last twenty years with her husband Steven, son Sid, daughter Poppy and a black Labrador called Lionel.

It became clear to Caroline that there were so many bootcamps for the 'yummy mummies', high impact fitness training and intensive classes for the young but not so many for the more mature members of the community with mobility or health issues. After the lockdowns this is a chance for the over 60's to get out of their homes, make new friends and simply get fitter in a gentle way. Classes are proving popular with the first lesson free as an introduction to what is on offer. Feedback has been incredibly positive with many bringing along a friend to enjoy the classes.

'Move it or Lose it!' was founded in 2010,

motivating thousands of people to keep active in later life by a network of fitness instructors of which Caroline is now the newest one in our area. Classes can bring people together to exercise and socialise in their local community which has become even more important after the lockdowns and social distancing due to Covid.

Caroline wants to help people in our local community to lead happier, healthier and more active lives. Classes can be seated or standing and concentrate on increasing flexibility, balance and strength which in turn increases mobility and tones muscles. Earlier this term her members have been enjoying raising money for 'Breast Cancer Awareness Month' arrived wearing pink to exercise and have a laugh (many go on to have a coffee at the local cafe to complete their morning).

On leaving I remembered an interview with a war veteran. He was 103 when I

was just a little girl, he had survived the trenches and going 'over the top' twice. The interviewer asked him the secret of a long life...he just smiled and said: "Keep moving."

Helen Edwards

Classes are at the following venues:

Long Ditton Village Hall, 2 Ewell Road, Long Ditton KT6 5LE

Monday: 10:00-11:00

Thursday: 10:00-11:00

The Vine Hall, Vine Road, East Molesey KT8 9LF

Wednesday: 09:45-10:45

To book a space Email: caroline.

harrison@moveitorloseit.co.uk or call 07711 161793.

Classes start back in the New Year week commencing January 3, 2022. £6 per class (first class free).



Brighten up your Garden!

Is your garden in need of a makeover?
From planting plans to a simple injection of colour

Green Room Garden Designs can help
020 8398 5703

Anna 07801 921166 – Kate 07956 641881

RHS and Merrist Wood Qualified

R P Brown Est. 1968 - Traditional, reliable and conscientious local **plumber**

No call out and no minimum charge, free written estimates, 1 year parts/labour guarantee



www.plumb-master.co.uk

Tel: 020 8398 0207 Mobile: 07973 636672



e-mail **ron@plumb-master.co.uk**

56 Speer Road, Thames Ditton, Surrey KT7 0PW

Esher and Dittons Youth Orchestra



Members of the Esher and Ditton Youth Orchestra work towards giving a public performance

Did you know that we have our very own local youth orchestra? Playing in a group adds a new dimension to learning an instrument, giving children a chance to make music in a fun, sociable and creative environment.

“The children learn so much from playing in Esher and Dittons Youth Orchestra (EDYO). Although each child has individual lessons outside of EDYO, playing in an orchestra enables them to learn vital lessons such as listening to fellow musicians, playing together, and following a conductor. For many of the orchestra’s members EDYO is their first experience of ensemble playing; many local schools don’t have orchestras, and there is often little opportunity to explore the classical repertoire.” - Megan Tress

Established in 2011, the Orchestra meets at the Vera Fletcher Hall from 3 till 5pm on the first five Sundays of each term. A public performance is presented on the final Sunday, giving players a feeling of real achievement and the opportunity to demonstrate their skills to their parents and other members of the audience. Players may also volunteer a solo performance.

EDYO welcomes players of grade 4 or above, aged between 8 and 16 (no audition required).

We are grateful for the continuing financial support of the R C Sherriff Trust.

Next session starts on January 12, 2022. For more information, please contact Megan Tress on 07932 717582, or megantress@googlemail.com

TRY HOCKEY AT SURBITON HC...

THERE'S SOMETHING FOR EVERYONE!



Inspired to try out hockey after watching the action at the Tokyo Olympics? Perhaps you last played a few (or many!) years ago but you're keen to get back onto the pitch?

You're in the right place - Surbiton Hockey Club (SHC) is a hidden gem in Elmbridge's thriving local sports scene and we can provide the perfect hockey experience for everyone.

Hockey is one of very few team sports you can play your entire life - England even fields an Over 75s 'Masters' team! SHC has 24 adult teams, providing hockey for all abilities and experience levels.

2 hours

Two of the most popular and fastest-growing sections of the club are our 'Walking Hockey' and 'Back to Hockey' groups. Both of these encourage old and new players into the game - you're never too old to start playing hockey and new faces are always welcome.



"Surbiton HC is a community - it makes me feel comfortable and really contributes to my enjoyment of living in the local area."

Chantelle, SHC player

Walking Hockey - it's hockey... but walking!

Friday mornings from 10 - 11am followed by tea/coffee and cake

Coaching is led by our professional coaching team who know how to make hockey great fun and pitch it at the perfect level for every player who takes part

First session free, £5.50 per session thereafter

Scan the QR code to find out more & register



Back to Hockey - a social way to start (or restart) your hockey journey

Monday nights from 8.30 - 9.30pm

Our Back to Hockey crew provide a warm and friendly welcome to every new joiner. Many of our Back to Hockey players have gone on to join a team and play more regular league hockey at the club

£30 annual fee and £60 per term (~12 sessions)

Scan the QR code to register online



Surbiton Hockey Club, Sugden Road, Thames Ditton, KT7 0AE

SHC Website: www.surbitonhc.com | Email us: inquiry@surbitonhc.com

Follow us on Twitter and Instagram @surbitonhc or Surbiton Hockey Club on Facebook to find out about upcoming events at the club.

Meet your distributors – Diana Jespersen



Your copy of Thames Ditton Today was put through your letterbox by one of our volunteer distributors.

Who are they and what are they up to when they are not pounding the streets delivering magazines?

Diana Jespersen delivers to Alexandra Road and River Bank.

When and why did you move to Thames Ditton?

I moved here from Whitton in 1998 after my husband died. I was looking for a nice environment and somewhere near the river to walk my little Yorkie dog. Alexandra Road's dynamic has changed over the years, and I am now one of the older residents. We are very pro-active as a community, especially since lockdown. There is a lot of interaction on WhatsApp and we recently had a street party.

Can you give us a 'potted biography'?

I was born and grew up in Cape Town. I married a Dane, who was the tour guide on a trip I took around Scandinavia. He was based in London and our wedding was in the Danish Church in Regents Park. Our eldest daughter was born here but one winter on a visit to South Africa we decided to stay. We had two more children there so, although we always intended to return to the UK we did not manage it until the children had all finished their education.

I have always worked in accounts and have been fortunate to have worked for a wide variety of companies. They range from a newspaper, coal mining, aerospace,



Diana and son toasting the arrival of her great-grandchild

property management, interior design, a charity and even a farmers' market and a local pub. I worked until I was 70 and still do the odd bit!

I now have eight grandchildren and very recently became a great-grandmother.

What do you enjoy doing in your spare time?

I like to have something in the diary every day!

In 2012 I was a Gamesmaker for the London Olympics. I was based at Wimbledon for the tennis and loved it. This took me into volunteering. This has included Painshill, The Rose Theatre, making refreshments for craft groups at the library, Saturday gardening in The Garden of Remembrance and twice a week working at the Walton Community Allotment which

my daughter set up.

I am part of the Residents' Association Flood Group and was involved in producing and distributing a guide for residents at risk of flooding as Thames Ditton will not directly benefit from the River Thames Flood Protection Scheme.

The rest of my time I fill with reading (I belong to two Book Clubs); playing golf at Hersham (I'm not very good but I enjoy the challenge); keeping fit at Colets; and discovering new places to walk locally.

Is there one thing about you that perhaps people don't know?

Through my family history research – I am a member of the Elmbridge U3A genealogy group – I discovered that I am a descendent of one of the original 1820 Settlers in South Africa.

What do you like to do at Christmas?

I am looking forward to a special Christmas this year with family, our first

with my great grandson. I have enjoyed spending Christmas in a number of different countries; South Africa, Denmark, USA, Germany and of course here in the UK. White Christmases have the traditional feel but a Christmas BBQ on the beach is also a fun experience.

Pat Cooke

QUICK FIRE QUESTIONS

Eat in or out?

Eat out – I am not an adventurous cook.

Pub or restaurant?

Both! I like my local, The Albany, and Casa Mia in Molesey.

Music or Radio 4?

Neither – I like the sound of silence.

Christmas host or guest?

Definitely a guest – I have a large family!



SHOP LOCAL & SAVE!

20% OFF
FOR THAMES
DITTON TODAY
READERS

Based locally in Thames Ditton, EcoWraps offers a wide range of gifts and home lifestyle products - from candles and mugs to bags and stationery. Plus, see our collection of colourful, reusable antibacterial beeswax food wraps - the natural alternative to cling film.



www.ecobwraps.com

**SUPPORT YOUR LOCAL
BUSINESS & RECEIVE
20% OFF YOUR
ORDER
WITH CODE TDT21***

*CODE CAN ONLY BE USED ONCE. EXPIRES 30.4.22



Celebrating a poster boy for a generation with a new Blue Plaque



Poster *Fresh Air for Health* by Herbert Alker Tripp. The original appeared in 1937. Courtesy of Science Museum Group Collection

You may have seen a new Blue Plaque on Lee Cottage in Weston Green Road, paying tribute to a remarkable previous inhabitant - Sir Herbert Alker Tripp.

While the name might not be familiar his artworks will be, for he created some of the most iconic railway advertising poster images of the last century, instantly recognisable for their timeless style, typography and sense of place.

In 1974, when Peter and Muriel Blunden wanted to move from their Chiswick flat, a

family house in Weston Green caught their eye. Peter was particularly taken with the large shed at the bottom of the garden, little knowing that it had been the birthplace of the iconic art that many of us recognise today.

The departing owners told them that the house had belonged to an artist: Herbert Alker Tripp. As the Blundens investigated the property it became clear that the shed would have been an ideal artist's studio with its north facing roof lights and large windows. The artist had



Poster; *Trees on the Heath*, by Herbert Alker Tripp, 1933
© TfL from the London Transport Museum

even decorated the gable ends in what we now know is his very distinctive style.



Tripp's style is recognisable from the paintings on the shed wall

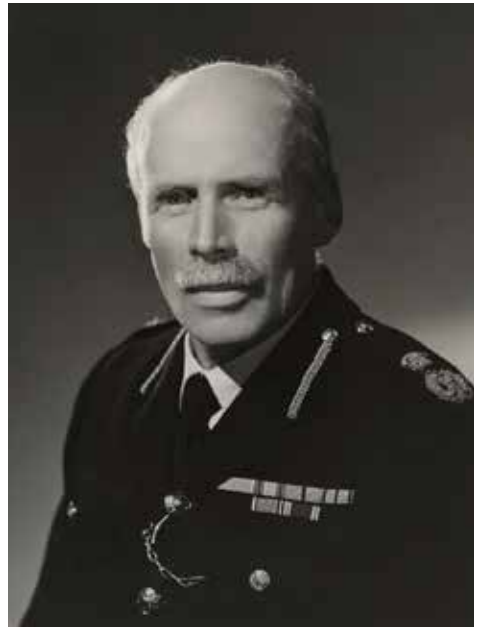
Tripp was not only a painter, or maybe not even a painter. He was born in London in 1883 and wanted to be an artist. However, his family disapproved so at just 19 he joined the civilian staff at the police headquarters at Scotland Yard, London.

He held a number of posts before being appointed chairman of the Police Recruiting Board in 1920 at the age of 27, where he came up with the idea of a police college. This idea was taken up by a subsequent head of the Metropolitan Police and a Police College was established in Hendon in 1934.

In 1932 Tripp was appointed Assistant Commissioner in charge of traffic, the first civilian to be appointed to this rank, and became a recognised authority on traffic control in Europe and North America. In 1938 he published a book, *Road Traffic and Its Control*, which remained the only book published on the subject until after his death in 1954.

He continued to serve in this role

throughout WWII with all its implications on London, including the movement of military traffic. In 1942 he published a second book, *Town Planning and Road Traffic* which looked ahead to post-war reconstruction and which pioneered the idea of motorways in Britain. On the (almost) 70th anniversary of that book one wonders what he would make of our villages' traffic problems! He also served on a Royal Academy committee looking at London's architectural reconstruction after the war.



Sir Herbert Alker Tripp, 1946
© National Portrait Gallery, London

In spite of his busy and practical career he thrived as an artist. He continued to paint and many of his paintings were exhibited in the Royal Academy. From time to time his original work comes to auction and his painting *NEWQUAY* sold for £1,200 in 2014. More than 20 of his paintings became iconic posters for both the Great



Some of the Tripp canvases found during renovation

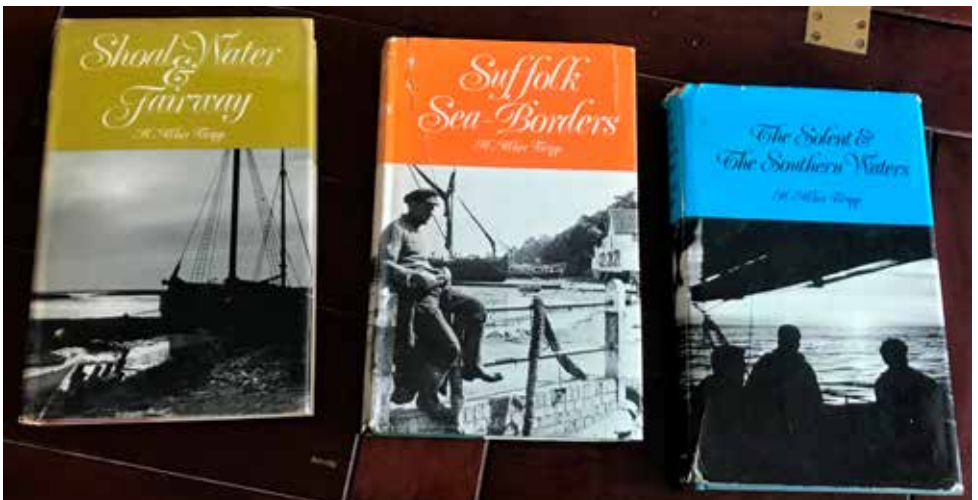
Western Railway and Southern Railway, encouraging people to get out and about and enjoy the great outdoors.

As Muriel and Peter were making some changes to Tripp's house they found a number of items that had been stowed away and forgotten, from letters from his wife or to his son at boarding school, to some old canvases.

They then discovered they had another connection with him. Peter is a keen sailor and owned boats for many years taking Muriel and their three sons to sea, firstly in the English Channel and later in the

Mediterranean where he also introduced his grandchildren to sailing.

It turned out that Herbert Alker Tripp was also an enthusiastic and well-known yachtsman. He enjoyed both cruising and racing and published articles in the yachting press in Britain and the US. He wrote four books on the subject, all enlivened with his own drawings. An internet search can still find copies of; *Shoalwater and Fairway* (1924); *Suffolk Sea Borders* (1926); *Solent and the Southern Waters* (1928) and *Under the Cabin Lamp* (1950).



In another echo of the past one of Muriel and Peter's sons also showed a flair for art and sketches of the family sailing boat sit alongside Tripp's yachting books.

Herbert Alker Tripp was rightly recognised in his lifetime and was appointed Commander of the Order of the British Empire (CBE) in the 1935 and knighted in 1945 for his service during the war.

We are pleased he is now recognised by a Blue Plaque so that his many contributions to life will continue to be remembered.

Libby MacIntyre



FUNERAL DIRECTORS AND MEMORIAL STONEMASONS

OUR FAMILY HELPING YOUR FAMILY

For over 240 years, seven generations of the Lodge Family have been proud to help local families in their time of need. We provide all funerals, whether modern, traditional, green or alternative, with care and compassion.

THAMES DITTON

37 High Street 020 8398 4586

Branches also in Esher, Molesey & Surbiton

www.lodgebrothers.co.uk



Andrew & Robert Lodge with their eco-friendly hybrid funeral fleet



"Wonderful empathetic service. Absolute kindness and professionalism, could not recommend highly enough." - Catherine

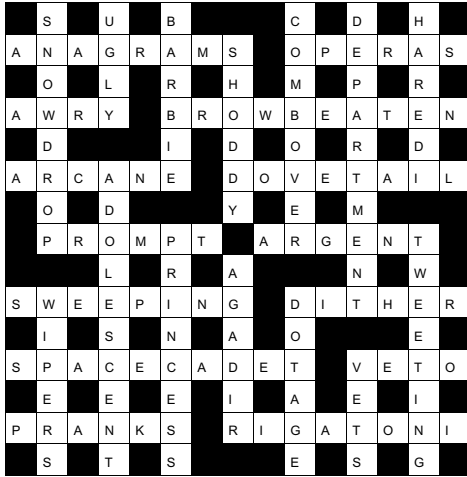
Lodge
BROTHERS 1780
the family you can turn to



ASK ABOUT OUR
PRE-PAYMENT
FUNERAL PLANS

FLORAL TRIBUTES • FUNERAL PLANS • WILLS & PROBATE

Solution to the Autumn Crossword



Congratulations to the senders of the first three correct entries opened in the shuffle. Each wins a £5 voucher to spend in local shops.

Gill Rye
10 Kings Drive
KT7 0TH

John Marks
13 Ennismore Gardens
KT7 0YS

Jack Maunders
4 Summer Crossing
KT7 0QB



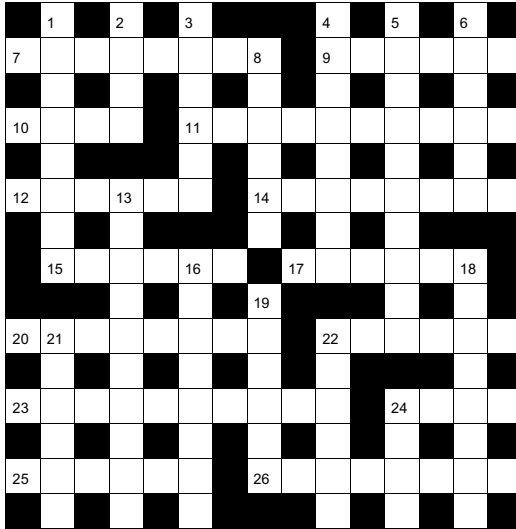
M.P.B. Landscapes

All aspects of work undertaken:
hard and soft landscaping, patios,
fencing, decking, brickwork, turfing.

Mark Blunden

Landscaping since 1993
fully qualified, Merrist Wood trained
Tel: 020 8398 3509
Mobile: 07957 281 748
E-mail: markblunden@yahoo.co.uk

Winter Crossword



by Howard and Bob Cruthers

The first three correct entries randomly opened after the closing date of February 5 will win a £5 voucher to spend in local shops.

Please send the completed puzzle (or photocopy) enclosing your name and address, with the envelope clearly marked 'Crossword Competition' to:

Thames Ditton Today
Crossword Competition
24 High Street
Thames Ditton
KT7 0RY

ACROSS CLUES

- 7 Shoe named after a ship's load line (8)
- 9 Affray (6)
- 10 Continent (4)
- 11 Small telescopes, for James Bond? (10)
- 12 Deep-fried chicken strip (6)
- 14 Servant with many skills (8)
- 15 Denouement (6)
- 17 Tries to write a piece? (6)
- 20 Adversary (8)
- 22 Cricketers' insult, in the snow? (6)
- 23 Throat infection (10)
- 24 Mussolini, "Il " (4)
- 25 Social environment (6)
- 26 Wood coater (8)

DOWN CLUES

- 1 Jeff Bezos' launch? (8)
- 2 Jane Austen heroine (4)
- 3 Toxin (6)
- 4 Plagues (8)
- 5 Ardent (10)
- 6 Rich cake (6)
- 8 Go easy, or let go (3, 3)
- 13 Showing extreme patriotism (10)
- 16 Explain magic in detail? (5, 3)
- 18 Perspicacity (8)
- 19 Stationary noise? (6)
- 21 Long-winded (6)
- 22 Nun (6)
- 24 Good-looking crockery item? (4)

SERVICES, CLUBS, SOCIETIES AND GROUPS

SERVICES

Cheer (Concern and Help for East Elmbridge Retired)	Manager	01372 879321
Dittons & Weston Green NeighbourCare	Frankie Bell	07790 472993
Elmbridge Borough Council Community Support Services		
Thames Ditton Centre for the community	Mon & Thurs	0208 3985921
Thames Ditton Dementia Centre	Nikki Harding	01372 474526
Meals on Wheels, Community Transport, Dial-a-Ride, Alarm & Telecare services, Relief Carers	ask for service at central switchboard	01372 474552
Homesupport Elmbridge	Thomasina Breslin	01932 267128
Esher and District Stroke Club	Ann Pollock	0208398 6132
Voluntary Action Elmbridge	Sally Dubery	01372 463587
Surrey Youth and Adult Education Service	Elmbridge Area	020 8979 8334

GROUPS

1st Thames Ditton Brownies	Bronach Hughes	bronachhughes@hotmail.com
3rd Thames Ditton Brownies	Bronach Hughes	bronachhughes@hotmail.com
2nd Thames Ditton Rainbows	Heather Crowe	heathercrowe@hotmail.com
1st Weston Green (All Saints) Scout Group	Carole Needham	gsl@westongreenscouts.org.uk
1st Weston Green Guides	Sumathi Jeevaratnam	sumathi.jeevaratnam@gmail.com
2nd Weston Green Guides	Helen Lawson	helenlawson287@gmail.com
2nd Thames Ditton Guides	Bronach Hughes	bronachhughes@hotmail.com
1st Weston Green Brownies (All Saints)		lwgbrownies@gmail.com
3rd Weston Green Brownies	Gillian Twomey	gtwomey@hotmail.com
1st Weston Green Rainbows	Lizzie Owen	westongreenrainbows@gmail.com
4th Thames Ditton Ajax Sea Scouts	Alison Derrick	020 8398 0041
Dittons Scout Group	Stuart Jack	07971 479740
Emberbrook Trefoil Guild	Mary Bowen	020 8398 6857
Friends of Bushey and Home Parks	Jean Smith	020 8977 9391
Girlguiding in Thames Ditton and Weston Green		dittonsdistrict.hjh@gmail.com
Friends of Walsingham Care	Miss Valerie Chicken	0208 398 2932
Molesey and Dittons Neighbourhood Watch	Chairman: John Haberfield	020 8398 5256
Parents and Toddlers(St Nicholas church)	Information	020 8398 7211
Ripieno Choir	Nick Harris	020 8399 7231
Surrey Bell-ringers	Giles Andre	020 8979 1994

CLUBS

Albany Motor Yacht Club	Secretary	01784466651
All Saints Weston Lunch Club	Val Atkinson	020 8398 1117
Arts and Heritage Club	Carol Butcher	01932 867511
Cercle Francais d'Esher	Brigitte Tiller	01932 860842 brigitte@ptiller.com
Claygate Bridge Club	Hon. Secretary	020 8398 1710
Colets Health & Fitness	Giordano Orsini	020 8398 7108
Ditton Bridge Club	John Dagnall	02083984463
Dittons Skiff and Punting Club	Hon Secretary	07710 139417

Dittons & Hinchley Wood Royal British Legion	Hon Secretary	020 8398 6263
Ember Players (Drama) Ember Sports Club	Elaine Sesemann	07801 943392
Ember Sports Club	Zenda Hedges	07717 304146
Ember Sports Club: Bowls	Sylvia Jones	01932 788701
Ember Sports Club: Croquet	Dr. David Cooke	01932 862841
Ember Sports Club: Tennis	Annabel Duncan	0208 786 6318
Esher Bowling Club	Roger Cooper	01372 468109
Esher Bridge Centre	Paul Whicker	01372 460157
Esher 41 and Ex-Round Tablers' Club	Dr. R. Tudor-Williams	020 8398 0108
Folk Dance Club (St Nicholas)	David Ford	020 8715 2148
Long Ditton Cricket Club	Nigel Hardy	020 8398 8361
Long Ditton Garden Club	Heather Harvey	020 8398 2642
Model Railway Society (Hampton Court)	Secretary	01932 241224
Old Cranleigh Rugby Club	Piers Cushing	07790 003731
Old Cranleigh Hockey Club	Simon Marshall (Men)	07801 737695
	Helen Hawes (Ladies)	07771 557900
Probus club, Hinchley Wood & the Dittons	Edmund Woolley	020 8398 3581
Probus Club, Sandown	Julian Rye	01932 976994
Probus Club of Molesey	Roger Marlow	0208 398 5460
River Club (BMYC)	David Walker	0870 460 3586
Surbiton Croquet Club	Alec Thomas	020 8398 2391
Surbiton Golf Club	Secretary	0208 398 3101
Surbiton Hockey Club	Secretary	020 8398 2401
Thames Ditton Lawn Tennis Club	Chris Lewis	07770 562569
Thames Ditton & Esher Golf Club	Mark Rodbard	020 8398 1551
Thames Ditton Squash Club (Colets)	Dave Peck	020 8398 7108
Thames Ditton Cricket Club	Howard Frish (Secretary)	07947 561449

SOCIETIES AND ASSOCIATIONS

Civil Service Pensioners' Alliance	Mrs Brenda Denby	0208 398 6054
Ember Choral	Linda Bridges	020 8399 5402
Esher and Molesey Garden Society	Jean Billett	01372 465961
Esher and District Amnesty International	Cherry Eddy (Campaigns)	0208 398 4377
Hampton Court Way Allotment Association	Lettings: Piotr Hennig	020 8398 5358
Long Ditton Youth Club	Toni Izard	07749 633973
Lynwood Allotment Society	Gill Vickers	020 8398 4870
Molesey and District Antiques Society	Linda Lambert	020 8398 1476
NADFAS (Decorative & Fine Arts) Kingston	Mrs. Valerie Windsor	020 8549 9967
Oxshott & Cobham Music Society	Cherry Eddy (Membership)	0208 398 4377 cherryeddy102@gmail.com
Thames Ditton Women's Institute (W.I.)	Secretary	020 8398 8615

OTHER

Cancer Research UK	Mrs. Vivienne Harris	020 8398 6787
University of the Third Age (U3A)	Hon Sec Anne Brown	01932 881633
Vera Fletcher Hall	Lettings: Amelia Crafts	08456 528 529
	Membership: Sue Morris	020 8224 0980
Weston Green Conservation Area Advisory Committee		wgcaac@outlook.com

Please contact the Editor to amend these listings



GILES SHENTON PRODUCTIONS IN ASSOCIATION WITH THE VERA FLETCHER HALL PRESENT



A fantastic musical
Christmas cracker!

A Vera Merry Christmas!

with West End star
Alison Carter...

*Grease / Jolson The Musical
Jailhouse Rock / The Producers
The Rat Pack / Guys And Dolls
A Beautiful Noise*

and TV star

Asha Kingsley
*Coronation St. / Dr Who / Cold Feet
Line of Duty / Wire in the Blood*

and the Surrey
Rainbow Choir



Enjoy a free glass of bubbly and
spend the evening listening to
and joining in with all your
favourite Christmas songs!

The Vera Fletcher Hall

4 Embercourt Rd, Thames Ditton KT7 0LQ

Sunday 19 Dec 6pm

Tickets from www.verafletcherhall.co.uk
or www.verafletcherhall.eventbrite.com

MICHAEL MOULE ANTIQUES

CONSTANTLY REQUIRE THE FOLLOWING ITEMS

All Furniture Pre 1920, Silver and Silver Plate,
Brass and Copper, All Clocks, Porcelain, Bronze
and Marble Statues, All Paintings, Gold Jewellery,
Old Dolls, Books, Pewter, Swords, Curios.

ANYTHING OLD AND UNUSUAL

For a fast and friendly service do not hesitate to
telephone any time, with absolutely no obligation.

IMMEDIATE CASH SETTLEMENT

020 8398 8072

26 Basing Way, Thames Ditton



MOORE
By Design

PROFESSIONAL KITCHEN DESIGN

The Hersham Centre, Hersham

T: 01932 379076

New online gallery with 150 images...

www.moorebydesign.co.uk

Karen's Angels

The All Needs Carers



Karen's Angels is a friendly local care
company, operating in Surrey.

We provide professional 24 hour care, social
and personal care services.

We are very proud of the excellent reputation
we continue to achieve with our customers,
their families, local authorities, GP's and DN's.

For further information please contact

Karen/Andrea

02082247848

07760220604



Be an Angel, it's even more rewarding than you think...

If the amazing stories of dedicated carers we've been hearing about recently has inspired you enough to consider a career in care, we'd like to hear from you.

We are looking for professional, caring part-time care workers in Surrey, so if you want to make a real difference in someone's life, join our mission.

If you are an experienced carer we'd love to hear from you and if you haven't cared before, full training is provided. We provide a number of key benefits and have a loyalty reward programme for our caring Angels looking for a long term career.

Here's 5 key things about our approach:

- * We pay up to £12 per hour for our caregivers. It is a skilled job which deserves to be fairly paid.
- * We provide full training over a 4 week period fully paid.
- * We pay 25p per mile and £8.91 per hour travel time between caregiver visits.
- * We do not allow our caregivers to work 40 hour weeks so that they have a life outside of caring.
- * Our care visits are a minimum of one hour long so our person-centred care is not rushed.

Simply get in touch with our recruitment team by calling **07923 157 020**
www.visiting-angels.co.uk/northsurrey

VisitingAngels® 
QUALITY AT HOME CARE