

THAMES DITTON TODAY

THAMES DITTON • WESTON GREEN • EAST MOLESEY



THE MAGAZINE OF THE
THAMES DITTON & WESTON GREEN RESIDENTS' ASSOCIATION

SPRING 2017

TJBathrooms

**FOR EVERYTHING IN
LUXURY BATHROOMS
& SHOWERS**

Open: Mon to Fri 8am-5pm Sat 9.30am-3pm
121 ANYARDS ROAD, COBHAM, SURREY, KT11 2LJ (Car park to rear of building)

Tel: 01932 866471 / 868523

tjbathrooms@hotmail.com • www.tjbathrooms.co.uk

FREE DESIGN & PLANNING SERVICE





THAMES DITTON TODAY

Published quarterly since 1970

Editorial Team

Libby MacIntyre & Sandra Dennis
editor@residents-association.com

Magazine Design

Guy Holman
24 Angel Road
Thames Ditton
020 8398 8727

Distribution

David Youd
6 Riversdale Road,
Thames Ditton KT7 0QL
020 8398 3216

Advertisement Manager

Verity Park
20 Portsmouth Avenue
Thames Ditton KT7 0RT
020 8398 5926

Contributors

You are welcome to submit articles or images. Please contact the Editorial Team well in advance of the next deadline May 8.

Advertisers

Thames Ditton Today is delivered to an influential 5000 households throughout Thames Ditton, Weston Green and East Molesey. Contact Verity Park for rates for full page, half and quarter page advertising.

In this Issue:

News from the Residents' Association	7
The Council's Local Plan consultation explained	13
Your Council tax and where the money goes	17
Orione Care – Learning through Horticulture	19
The Speer Road Church	21
Your Residents' Association in Action 2016 – 2017	24
Thames Landscape Strategy	27
When England ladies played on Giggs Hill Green	31
Winter crossword solution	42
Spring crossword	43
Services, Clubs, Societies and Groups	44
The Theatre in Thames Ditton	46

Photo credit: *Sandra Dennis*

www.residents-association.com

Officers and staff of the Association are volunteers, but we must fund costs of this magazine, administrative and election expenses, and other expenses such as spring bulb-planting and village Christmas trees. The subscription is only £3 per household. If you can contribute more, please do so. Subscriptions can be paid via our website www.residents-association.com; subscriptions (in an envelope please) may be left at Boots Pharmacy, 14 High Street, Thames Ditton or Thorkhill Road Pharmacy, 94 Thorkhill Road, Thames Ditton. Or mail to Membership Secretary Peter Haynes at 6 Onslow Gardens, Thames Ditton KT7 0JJ. Thank you.



FEEL FITTER, HEALTHIER & HAPPIER WITH COLETS!

Plus, to get you started, try our
8-week GET FIT STAY FIT programme
- free as part of your membership.

BRAND
NEW
CHANGING
ROOMS

UPGRADED
STUDIOS

NEW
FUNCTIONAL
TRAINING
STUDIO

CALL NOW TO BOOK YOUR FREE TRIAL!*

Call now, or come in for a chat.

020 8398 7108

St Nicholas Road • Thames Ditton • KT7 0PW

*Terms and conditions apply.


www.coletshealthclub.co.uk



RESIDENTS' ASSOCIATION

Annual General Meeting

8.00 pm on 21 March 2017
at Vera Fletcher Hall

Agenda:

1. **Minutes of the 2016 AGM** Meeting and matters arising therefrom
2. **Chairman's Annual Report;** receive, discuss and adopt the Annual Report for 2016-2017
3. **Accounts:** To receive the accounts for the year ended 31 December 2016
4. **Appointments:** to receive nominations and appoint officers and an auditor: President, Chairman, Vice Chairmen, Hon Secretary, Hon Treasurer, Auditor
5. **Elections:** to adopt a candidate for the Surrey County Council Election 4 May 2017
6. **Resolutions:** to consider any resolutions submitted in writing to the Secretary by 7 March 2017
7. **Guest Speaker: Rebecca Law "Thames Landscape Strategy Weybridge – Hampton – Kew** Historic vistas, palaces, gardens, boatyards..."

President: Martin Wilberforce

7 River Avenue, Thames Ditton
020 8398 4732

Surrey County Councillors

Peter Hickman, 3 Elmbridge Lodge
Weston Green Road, Thames Ditton
020 8339 0931

Stuart Selleck, 2 St. Johns Road
East Molesey
020 8979 2466

Thames Ditton Councillors

Tricia W. Bland,
29 Station Road, Thames Ditton 020 8339 0485
Ruth Lyon,
11 Riversdale Road, Thames Ditton 020 8398 3396
Karen Randolph,
Deepfield, Giggs Hill Road,
Thames Ditton 020 8398 5005

Hinchley Wood & Weston Green Councillors

Tannia Shipley, 'Clinton House'
27 Lower Green Road, Esher 020 8398 2484
Janet Turner, 2 Montgomery Ave,
Hinchley Wood 020 8398 1565
Nigel Haig-Brown
53 Heathside, Esher 020 8398 4060

Officers

Chairman: Rhodri Richards,
Ditton Cottage, Giggs Hill Road,
Thames Ditton 020 8224 5181
Vice-Chairman: Libby MacIntyre,
24 High Street, Thames Ditton 020 8398 5534
Hon. Treasurer: Christa Silverthorne
62 Thorkhill Road, Thames Ditton 020 8398 7101
Hon. Secretary: Florian Traub,
Longmead Road, Thames Ditton 020 8224 2880
Membership Secretary: Peter Haynes
6 Onslow Gardens, Thames Ditton 020 8398 6019

Conveners of Sub-Committees

Health and Community:
Karen Randolph (see above)
Planning: Graham Cooke
23 Ashley Road, Thames Ditton 020 8398 8509
Highways, Drainage:
Andrew Roberts, 1 Boyle Farm Road,
Thames Ditton 020 8786 6882



The Next Residents' Association Open Meetings are

Tuesday 21 March 2017 8pm (AGM), Tuesday 25 April
– Vera Fletcher Hall, Thames Ditton
Tuesday 20 June 2017 8pm – All Saints, Weston Green
All who live or work locally are welcome



Weston Green
School

A thriving independent
co-educational
day school for children
aged three to eleven

K i n d e r g a r t e n



- Specialist teaching in Music, French and Games
- Optional afternoon sessions including Forest School, Yoga and Cookery
- Extended days available

Open Morning:
Friday 3rd March,
9.30 - 10.45am
Call 020 8398 2778
to book your place

Learning with joyful enthusiasm

Tel: **020 8398 2778** | E-mail: info@westongreenschool.org.uk

www.westongreenschool.org.uk

Weston Green Road, Thames Ditton, KT7 0JN

News from the Residents' Association to end-February



'Save our buses' petition arriving at County Hall

Residents' power – saving our buses!

The campaign to Save Our Buses has been successful. When Surrey County Council (SCC) first announced cuts to local bus services there were **NO** buses to Surbiton in the new timetable. After an outcry from the RA and residents, SCC revised the timetabling to include one outward journey to Surbiton and two return journeys to Thames Ditton and agreed to review these arrangements with the new operator at the earliest opportunity. Meanwhile the RA continued to lobby for an improved service as it was clear that the initial offering was inadequate. The RA is delighted that SCC listened to our concerns and agreed with Falcon Coaches that nearly all 514/515 journeys will run via Surbiton. There are now 11 return buses to Surbiton, per day, Monday – Saturday.

Other beneficial adjustments have also been made and these are detailed in the new timetables, available at www.surreycc.gov.uk.

Thank you to all those residents who took the time to campaign with us to ensure that we have a bus service fit for purpose. We will need to continue to be vigilant as all SCC bus contracts are up for renewal in August.

The best way to save our bus service is to use it – see what journeys you could make by bus!

Responding to the Local Plan consultation

The Residents' Association has submitted a detailed letter in response to the strategic consultation on the Local Plan saying it does not believe the case has been made for allowing development in Green Belt Areas and, in particular, the land described as area 58 (Long Ditton Green Belt) which we believe represents an outstanding example of what the Green Belt was designated for in terms of two of the five purposes set out in the National Planning Policy Framework:

- to check the unrestricted sprawl of large built-up areas
- to prevent neighbouring towns merging into one another

PAINTERS & DECORATORS

We are residential painters and decorators with 20 years experience, we offer wallpapering, painting and paint effects for internal and external decorating

We work in a clean and efficient manner, causing minimal disruption in your home and come highly recommended



Contact Clive Hogg
to discuss your
decorating needs

020 8339 0712

m: 07957 582296

e: clive.hogg.ch@gmail.com

15 Hampton Court Avenue, East Molesey, Surrey, KT8 0BG

SCIENCE TUITION

A Level & GCSE Tuition

**Biology, Chemistry
& Physics**

Tel: 020 8398 7365

**Alan Tucker:
2 Gainsborough Close,
Esher KT10 8JR**

**alan@asbtucker.co.uk
Enhanced CRB**

MICHAEL MOULE ANTIQUES

CONSTANTLY REQUIRE THE FOLLOWING ITEMS

All Furniture Pre 1920, Silver and Silver Plate,
Brass and Copper, All Clocks, Porcelain, Bronze
and Marble Statues, All Paintings, Gold Jewellery,
Old Dolls, Books, Pewter, Swords, Curios.

ANYTHING OLD AND UNUSUAL

For a fast and friendly service do not hesitate to
telephone any time, with absolutely no obligation.

IMMEDIATE CASH SETTLEMENT

020 8398 8072

26 Basing Way, Thames Ditton

The letter contests the ‘government-imposed’ requirement to find space for 9,500 new dwellings in Elmbridge over the next 20 years and draws attention to the fact that the infrastructure in Elmbridge and surrounding areas is already inadequate and describes the current situation experienced by residents regarding schools, roads, trains, drainage and flooding, and health services.

The RA is opposed to building on Green Belt anywhere in Elmbridge and gives strong reasons for the continued designation of area 58 as Green Belt.

We submit that it is not lack of development that has led to a greater perceived need for additional housing but the nature of much of the development that has taken place. Large parts of the Borough contain housing plots that could accommodate far greater densities than they do. Why should Green Belt land be sacrificed when half-acre plots and larger are granted planning permission for single dwellings? These developments may give developers large profits and provide a home for foreign investors’ cash but they do little to assist local housing needs.

The RA strongly challenges any proposals to utilise the – already insufficient – public car parks in the area for development and feels that the proposal to build on the Scout Camp at Polyapap would be entirely unacceptable.

In conclusion we urge Elmbridge to revisit not only its proposals for the Local Plan but also its core strategy in terms of allowing planning permission on low-density housing aimed at the very wealthiest buyers, many of whom do not, and will never, live in the borough.

Young litter pickers set an example



Dittons Beaver Scouts set an example

The Dittons Beaver Scouts are now regularly joining the **Thames Ditton Litter Pickers** every month. If you are interested in coming along to help or want to join the group it meets on the third Saturday of every month at the George & Dragon at 11am and returns at 12 noon, so volunteers need to give up just an hour of their time. For more details contact Tricia: tdwgra@the-blands.co.uk

The **Weston Green Litter Picking** group is meeting in early March and intends to get going as soon as possible. If you are based in Weston Green and want to join in please contact Cllr Tannia Shipley: tshipley@elmbridge.gov.uk

Ring out those bells

Our recent bell ringing article was well received, however some people may have misunderstood the line that *ringers must be tall and heavy enough to handle a bell*; what was meant was that ringers need to be *tall enough*, so you don’t necessarily need to be tall! If you would like to get involved please contact Giles André via St Nicholas’ Parish Office (020 8398 9641).

Defibrillator at All Saints Weston Green Church Hall



Life-saving equipment at Weston Green Church Hall

In February All Saints Weston Green hosted three sessions of first aid training for volunteers at the Church and members of the local community to coincide with the installation of the new Automated External Defibrillator which is located by the door of the Church Hall at All Saints.

The AED has been described as the single most important development in the treatment of sudden cardiac arrest and is specifically designed to be used by members of the public with little or no training.

The volunteer team from George Bairstow Charitable Trust (gbct.org.uk) presented three highly effective sessions of familiarisation training in the AED and basic first aid. It is great to know that we have a defibrillator so close at hand in our community and that it is straightforward to use in the event of cardiac arrest.

Please take two minutes to watch the video of how to use a defibrillator on the British Heart Foundation website (<https://www.bhf.org.uk/heart-health/how-to->

[save-a-life/defibrillators](https://www.bhf.org.uk/heart-health/how-to-save-a-life/defibrillators)). Keep an eye on the All Saints Weston website for details of additional training sessions later in the year. To register interest in attending one of these, please email chrisie@allsaintsweston.com

Path on Ditton Common, Station Road

At a recent RA Open Meeting a resident expressed concern at the lack of pavement on the west side of Station Road. This means that people walking along the west-side pavement from Ember Lane have to cross the busy junction at Lower Green Road and then cross again in order to access Esher Station.



New path

Cllr Tannia Shipley worked with the Portfolio Holder for Leisure and Culture, Cllr Janet Turner, and the Countryside Team at Elmbridge Borough Council and it was agreed that a path be instated on the other side of the highway ditch on Ditton Common. If this path is well used by pedestrians, the Council will then put in some road planings or similar material to make the path more robust.

This path should improve pedestrian safety but if we are to keep the path on a permanent basis it is vital that people use it!

Secret Gardens of Weston Green

This year the 'Secret Gardens of Weston Green' will be held on Sunday 25 June to coincide with the weekend Flower Festival at All Saints Weston and, as before, wonderful refreshments will be served in the church hall. Money raised will go towards the Weston Green Conservation Area projects namely the Milbourne Pond Appeal and Weston Green Christmas tree lights. All Saints' Church will benefit from the sale of the refreshments.

If you would like to get involved and open your garden (or offer to help) please contact Tannia Shipley, tannia.shipley@elmbridge.gov.uk 0208 398 2484 or Nigel Haig-Brown nhaigbrown@elmbridge.gov.uk Tel: 0208 398 4060. Remember your garden does not have to be perfect to join in!!



New Weston Green Quiz Champions

January saw a hotly contested challenge to become Weston Green Quiz Champions 2017.



Weston Green Quiz Champions – 'Triumph'

Defending champions 'The Magnificent 8' lost out this year to the appropriately named 'Triumph' who carried home the much-coveted Weston Green mugs and a bottle of bubbly courtesy of Marneys Village Inn.

Second and third places went to 'Nigel's Harem' and 'Octopus' respectively. Wine for the evening was donated by the Co-Op, which since its opening just over a year ago has been keen to involve itself in community life.

Local quizmaster Geoff Ellis fired questions on current affairs, food, culture, TV and sport as well as a picture round testing how well the local participants knew landmarks of Weston Green!

Proceeds for the evening will be donated to the All Saints Wednesday Lunch Club for retired people living alone which meets on the last Wednesday of every month.

Milbourne Pond

The work continues to try and restore Milbourne Pond. Over the next few weeks we will be having further discussions with consultants about possible solutions.

Planning

Esher Tyre and Exhaust (2016/1963) the application for eight flats which was refused because of incongruous and overbearing impact has gone to appeal.

The new application to develop land behind the **east side of Speer Road** (2016/2364) was rejected by EBC following considerable local representation.

The application for an additional property at **31 Embercourt Road** (2016/2576) was rejected by EBC.

The application for a water activity centre at **Hurst Park Open Space** (2016/2760) has been withdrawn.

We continue to monitor and object to inappropriate development whilst, at the same time, offering assistance to local residents to better understand the planning system.

Distributors and collectors thank-you party

Thames Ditton Today involves a large group of volunteers, from the editors and distribution manager to the depot managers and deliverers. Around 150 people contribute to this community asset and were invited to the annual thank-you party.

Parking

The next stage of the parking proposals will go to consultation in March. Please be aware that no new parking restrictions will be possible as part of this current review. Any new proposals will be considered well into the future.

Surrey County Council News

Following the debacle of the proposed referendum for a 15% rise in council tax,

the full council was asked to approve a budget with a 4.99% council tax rise.

The budget did not balance and did not contain any details of where savings could be made. The cost of adult social care and of looking after residents with learning difficulties is not sustainable. It is possible that to make any inroads into the likely deficit many services may be cut by up to 30%. This could include libraries, sure-start centres, subsidised bus routes, youth services and more. This has already begun in many councils across the country. The opposition parties could not support such an unbalanced budget.

Dates for your diary

Farmers' Market

George and Dragon car park from 9-1pm Saturdays; March 25, April 22; May 27.

Surrey County Council Elections

Thursday May 4

The Dittons Fair

(Dittons Scout Group)
Sunday May 7 at Giggs Hill Green from 1.00 pm

Esher May Fair

('Ajax' Sea Scouts)
Saturday May 20 at Esher Green from 12.00 pm

Secret Gardens of Weston Green

Sunday June 25 1-5pm

Residents-Association.com

The Council's Local Plan consultation explained



The new Local Plan strategy proposals put out by Elmbridge Council for consultation has caused a lot of concern. It is a very detailed document but there have been a number of misleading messages and a good deal of misunderstanding about the plan and the consultation itself.

Councillors and council officers knew that these proposals would be the cause of a great deal of concern, which is why, rightly or wrongly, so much information was provided on the Council's website, and why presentations and 'drop-in' events took place all around the borough. There are some particular points which bear highlighting:

Elmbridge Council is revising its Local Plan only because the Core Strategy (which it will replace) is deemed to be non-compliant with the National Planning Policy Framework (NPPF), because it was published in 2011, before the NPPF was introduced in 2012. It should be made clear that, contrary to some highly publicised suggestions, no development would be permitted which is contrary to the NPPF. The importance of a Local Plan is that these local policies (which cannot contradict the NPPF) can expand and develop national policies in the NPPF to more effectively manage development locally.

The Government requires the new Local Plan to address the need for housing. This has been independently assessed as 9,450 residential units (about the size of Weybridge) between now and 2035. This is

more than twice Elmbridge's current target with our existing Core Strategy.

How can this need be met? If the council does nothing, the Government will declare Elmbridge's current Local Plan policies non-compliant with the NPPF and take over planning decisions. Effectively this would give developers a free rein as national policies would not be sufficient protection for local circumstances. The Council under the Residents/Lib Administration fully supports protecting the Green Belt. This has been recently demonstrated by the refusal of Planning Application 2016/2217 for a development of over 1000 houses, known as Drake Park, on a large area of Green Belt, between Walton and Esher in November 2016. If this decision is appealed, one of the main reasons the Council's decision may be upheld is because a revised Local Plan is being developed.

More than half of Elmbridge is covered by Green Belt. As we know, most of the rest of the area has been increasingly urbanised, many would say to capacity, particularly as far as infrastructure is concerned. Unlike many other parts of the country, Elmbridge has already developed most of its brownfield land. (About 3,500 houses could be probably be built on sites which are known about or allowed for). If the assessment of housing need is correct, that leaves a shortfall of around 6,000 (the same number incidentally as the 'affordable' housing which is needed). Where are we going to find the space for all these homes?

The Council suggested three options in this consultation; it needs to know whether there are alternative ways of addressing the underlying reason for this Strategic Options review, particularly alternative ways to avoid having to develop any of the Green Belt.

I am as concerned as anyone, if not more so, about what happens to this area (otherwise, why would I be a councillor?) and particularly in protecting our Green Belt. But I also know many if not most of our children can't afford to buy or even rent in this area. Neither can the teachers, nurses, doctors, policemen and women, ambulance staff, carers and many more workers on whom we rely so much. Local employers complain at not being able to attract employees because they can't afford to live here. So a balance has to be struck and a real debate needs to take place using facts and evidence rather than inaccurate and exaggerated assumptions.

Three options were presented in the consultation – but there are obviously many variations of these. The options basically cover maximizing density in the urban area without touching the Green Belt, or amending the Green Belt boundaries to a lesser or greater extent to reduce the impact of the required development on the character of our towns and villages.

Unless the extent of the housing need changes, we can't get away from the fact that the additional homes will have to go somewhere. I am well aware of the views of local people towards the ever increasing urbanisation which we are currently experiencing, making our area more and more like parts of London. Most people don't want to build on our precious Green Belt but the government requires the

Council to review the Green Belt, when updating the Local Plan to take account of the increased assessed housing need. In the future, according to the White Paper, these reviews may be required every five years rather than, as at present, every 10 – 15 years. You might well ask why the government makes this requirement for regular reviews if there is no intention to require Councils to amend boundaries to make more land available for development.

There are a number of misunderstandings (the planning process is littered with jargon, with everyday words having a specific meaning when used in a planning context). I would like to clarify some of them here:

- The Council will NOT be doing any of the building itself. The Local Plan simply sets the context (and rules) for owners and developers who wish to develop land.
- If the Green Belt boundaries of any significantly sized areas are changed then it is the Council's intention to ensure the necessary infrastructure requirements can then be co-ordinated. At present incremental building on small sites, wherever they are, means that there is no leverage to insist that such developments must have accompanying infrastructure.
- Owners of those areas of land which become available for development following any relaxation of Green Belt boundaries will not be compelled to make it available for development.
- The Local plan is for the period up to 2035 so development will be staggered.
- There are no plans for the Council to compulsory purchase and develop any land.

- As was explained in the consultation document, there are a number of planning constraints to development, of which Green Belt classification is one. For example: undeveloped flood plain, allotments & playing fields, SSSI's (Sites of Special Scientific Interest), Open Space, village greens etc, not to mention graveyards, churches, and many more.
- As an example, if area 58 in Long Ditton (one of the three significant areas identified as 'weakly' performing Green Belt) was to be removed from the Green Belt, a substantial proportion of it would still not be available for development for a variety of reasons (e.g. Stokes Field, the cricket club, hockey club, allotments and more). Other areas may be reclassified e.g. as Local Green Open Space, or Open Space. All green spaces are afforded a level of protection against development

(subject to certain criteria being met) both by national and local planning policies. The Local Green Space designation is a new concept introduced by the NPPF which, upon designation, offers a level of protection to that area similar to policies on Green Belt.

The process of revising the Local Plan is an ongoing exercise. Once Elmbridge Council has identified the strategic approach it will take, the more detailed policies for the replacement Local Plan will be drafted and put out for consultation during the summer. Unfortunately the strict timetable the government has provided has meant it hasn't been possible to avoid one holiday period or another, but the Council (officers and councillors) is very conscious of the need to provide as long a consultation period as possible.

Cllr Karen Randolph

FUNERAL DIRECTORS AND MEMORIAL STONEMASONS



THE FAMILY YOU CAN TURN TO...

Seven generations of our family have been helping and advising local families in their time of need. For over 230 years we have been providing funerals, both modest and traditional, with care and compassion.

ESHER:	78 High Street	01372 463903
EAST MOLESEY:	156 Walton Road	020 8941 1412
THAMES DITTON:	37 High Street	020 8398 4586

Lodge
BROTHERS 1780
the family you can turn to

www.lodgebrothers.co.uk



ASK ABOUT OUR
PRE-PAYMENT
FUNERAL PLANS

Custodian Trustee: HSBC Trust Co. (UK) Ltd.

Concerned about the performance of your Personal Pension or Stocks & Shares ISA?

**knightjames**
Wealth Management

**A friendly, local
and professional
service**



Mortgages
Equity Release
Investments
Tax Planning
Commercial Insurance



Call: 0208 398 6677 – www.knightjames.com

6 Station Road, Thames Ditton, Surrey, KT7 0NR

If you're having an outdoor event call us & let us put you.....

**Undercover
Event Tents**

We specialise in offering a wide range of marquee solutions to suit any social or commercial event in south east london & surrey

Phone: 0208 398 7219
Mobile: 07864 585 181
email: undercover.events@yahoo.co.uk
web: undercovereventtents.co.uk



Your council tax and where your money goes - Surrey County Council, Elmbridge Council, Surrey Police?



This is the time of year when your council tax demand drops through the letter box and however much we have read about pressure on services it is always a bit of a shock when you open the envelope.

Of the three elements in your tax **Surrey County Council (SCC) takes the largest share – 75%**. What do you get for this?

The bulk of your **Surrey Council Tax** is spent on **adult social care, learning difficulties and children's services**. The annual cost of managing health and those with learning difficulties in Surrey is about £70m, but in 2017/18 we will only receive £30m from the Government, which has cut the annual grant by £170m since 2010.

It is right that we look after the elderly and vulnerable but there are many other services that residents value. We have achieved much locally over the past few years, e.g. the very successful one-hour short term parking in Thames Ditton High Street to help keep the shops alive. After the recent parking survey some notable bottlenecks such as in St Leonard's Road will be eased. Many roads have been rebuilt in the Dittons and Weston Green but this last winter has shown how bad is the condition of most roads.

SCC is responsible for the **Fire Service, Youth Services, Waste Disposal, Public Health, Highways**, over a million highway trees, verge cutting (Elmbridge do the work on behalf of Surrey), **Sure Start Children's Centres, Libraries, School Provision**

(the bulk of spending on schools is from central government), **Bus Subsidies, Street Lighting** that is now being turned out at midnight in order to save money (£210,000 p.a.), **maintaining rights of way, gully cleaning** and **Community Recycling Centres**.

Each borough has a **local committee** consisting of County and Borough Councillors to bring decision making closer to residents on local services including highways, social care and education. The committee supplies funding for local projects, e.g. the provision of a covered cycle rack at Thames Ditton Station (coming soon!).

Elmbridge Council, with only a 12% share, is responsible for all the other services of which the one most in the news today is **planning** – we now have to deal with a Government which says that the Green Belt is sacrosanct then tries to force councils to make decisions which endanger that Green Belt! Under planning also come **heritage and conservation** – which was so successful in the Home of Compassion development – and tree preservation orders to stop trees being cut down by developers.

Waste collection also comes under Elmbridge where we have a good record on recycling. **Environmental care** through removing abandoned cars in e.g. Weston Green, and **dealing with fly-tipping, street cleaning, vandalism and graffiti** are among the most visible aspects of

Elmbridge's work. Health and safety at work and licensing of public premises are among the services usually under the radar but important none the less. While Elmbridge no longer owns any council houses it is responsible for finding places with housing associations etc. for those in need.

Social Care covers our seven Day Centres for the elderly, meals on wheels, community alarms and community buses, grants and help to voluntary bodies such as Rent Start Elmbridge, the Citizens' Advice Bureaux and CHEER (Concern & Help for East Elmbridge Retired). In our day centres there are a wide range of services including cooked lunches, outings, dementia memory clinics, bridge and entertainment.

Leisure is one of our most public services through the splendid Excel Centre, the Hurst swimming pool and our public

halls. The commons, recreation grounds and cemeteries are all Elmbridge's responsibility, where we have successfully restored proper regular maintenance after the neglect of the past few years.

The Surrey **Police** precept at 13% covers both front-line and back office policing.

Elmbridge collects your Council Tax for all three authorities and then hands over to Surrey and the Police its share, so when we complain about the total level of Council Tax we should in fairness look at who does what and the increase applying to each share. Elmbridge's 12% portion this year under the new Residents' Association and Liberal Democrat Administration has gone up 1.93% – slightly less than last year.

**Surrey County Councillor
Peter Hickman
EBC Councillor Ruth Lyon**

Cate Michaels

BA (Hons) PGCE

English Tuition

Thames Ditton based



- ✓ GCSE and A-level revision
- ✓ GCSE and A-level Examiner
- ✓ English Language and Literature
- ✓ Key Stages 2-5 (Years 3-13)
- ✓ Enhanced DBS/CRB

t: 020 8398 9445 e: cmenglishtuition@gmail.com

Orione Care – learning through horticulture



A place to learn

The Molesey Horticultural Centre, part of local charity **Orione Care**, provides opportunities for adults with learning disabilities to learn and take part in horticulture. There are also opportunities to learn and develop other creative skills such as woodcraft, model-making, painting and drawing.

Though it may be unfamiliar to many local residents, the Centre is situated at the end of Orchard Lane, East Molesey, in private grounds near Cow Common. There is a commercial-sized greenhouse on site and both raised and ground-level outdoor soil beds.

In the greenhouse, bedding and house plants are grown for sale, while vegetables such as runner beans, potatoes, tomatoes and pumpkins are cultivated in the ground beds. The produce is sold to the general public.

Each user of the Centre's facilities is assigned a raised flowerbed, to cultivate a display of their own creation, incorporating

flowering plants, vegetables, herbs and creative handiwork.

Many of the individuals attending the Centre live in the Borough of Elmbridge, while others come from the surrounding local areas.

Volunteers wishing to help out in the gardens during the summer months are also very welcome.



Creative handiwork alongside horticulture

If you would like to have more information, please email: manager.horti@orionecare.org

Karen Chia
Manager, Molesey Horticultural Centre



M.P.B. Landscapes

All aspects of work undertaken:
hard and soft landscaping, patios,
fencing, decking, brickwork, turfing.

Mark Blunden

Landscaping since 1993
fully qualified, Merrist Wood trained

Tel: 020 8398 3509

Mobile: 07957 281 748

E-mail: markblunden@yahoo.co.uk

DOWN TO EARTH



**27 Church Walk
Thames Ditton
Surrey
KT7 ONP**

Phone: 020-8398-7219

Mobile: 07867-590-450

E-mail: downtoearth2008@live.co.uk

A family run, local gardening service

GARDEN MAINTENANCE, CLEARANCE & DESIGN AT AFFORDABLE RATES

Gardens can get out of hand very quickly, sometimes
it can be hard to keep on top of it all year round.

We can provide total garden clearances', regular gar-
den maintenance, garden design, fencing & paving, to
help create.....(and keep) the garden you've always
wanted.

Why not give us a call or drop us an e-mail to see
what we can do for you?

The Speer Road Church



Big changes are happening at the United Reformed Church on Speer Road in Thames Ditton. Which church? I hear you ask. It's the long white building that you pass as you walk to and from Thames Ditton railway station. It's the place where the Teddies playgroup meet. It's also the site where there has been a church since 1804. It was originally a Congregational Church but since 1972 when the Congregational Church joined with the Presbyterian Church of England to form the United Reformed Church, it has been a URC church.

So, what changes are happening? First of all, the Church has changed its name

from the Thames Ditton United Reformed Church to the Speer Road Church. Why? Because so many people had no idea where the church was, even though they might walk by it each day. A big noticeboard will soon be appearing outside to highlight that it is a church but also to let everyone know of all the activities that take place there.

As well as regular services, the Church does have an active social programme – film nights, Burns Night Suppers, poetry reading evenings, trips to the Rose Theatre and to the VFH pantomimes as well as visits to places such as the Royal Hospital Chelsea – to which all are invited.



Claremont Fan Court School

An independent co-educational school for pupils aged 2½ to 18 years

Open Mornings



Whole School - 10.00am-12.30pm

Introductory talk at 10.00am

Saturday 4 February

Saturday 11 March

For further information, tel **01372 473624**
or email **info@claremont.surrey.sch.uk**



Nursery
Pre-Prep
Prep
Senior
Sixth Form

What else is happening? Not much to the church building itself, which was erected in 1899, except that the wooden frames which surround the lovely old Arts & Crafts stained glass windows are being looked at – time and the weather have taken their toll on them. The big building works are going to be happening in the Church Hall. A 1960s building, it is used by many local groups – the Ripieno Choir, Stage Studio Theatre School, a karate club, Swedish and Spanish lessons for children groups and, of course, the Teddies Playgroup – not to mention hosting various birthday parties along the way.



Great fun with Messy Church

The changes? – the old kitchen is being moved and replaced with a bigger, more modern one; new loos, including one for the disabled, and baby changing facilities will be added, a meeting/coffee area will be established at the front of the building with large glass windows so that all walking by can see what's going on, and a new entrance to the hall will mean that the Teddies playgroup can be isolated (an Ofsted requirement) so that Church activities can take place while the playgroup is in session.

Why is this all happening? Well, there are a number of practical, building-related reasons but primarily it is to raise the profile of the Church in our community. As one of the few non-Church of England Protestant churches in the area we feel we have a lot to offer people – but they need to know that we exist and that we are a lively bunch.



Speer Road Church has an active social programme

Services are usually held on Sunday morning but on the fourth Sunday of each month we have a relaxed and informal afternoon Teatime Worship service, followed by tea and cake.

On the second Sunday of each month we also have a 'Messy Church' which is great fun for children and parents alike. We are also very active in Churches Together in the Dittons, Women's World Day of Prayer and we've been working with St Nicholas Church for over 100 years to spread the Gospel to the Thames Ditton community. We are a warm and welcoming church. Do stop in some time – you can see the changes that are happening, meet some nice people and have some fun while also learning about our Church!

Linda Lambert



Your Residents' Association

Notification to residents of key planning applications

Web site and forum maintained as resource for all residents

High Street Christmas Fair & continued funding for High Street Christmas Trees & lights

Secret Gardens of Thames Ditton

Supported public consultation on parking restrictions in Thames Ditton, Weston Green and Molesey

Supported residents' objections to inappropriate development

Supported Thames Ditton High Street retailers

Regular monitoring of water levels and maintenance of Milbourne Pond

Supported parents seeking long-term solution to secondary schools crisis

Traveller incursion deterrent measures

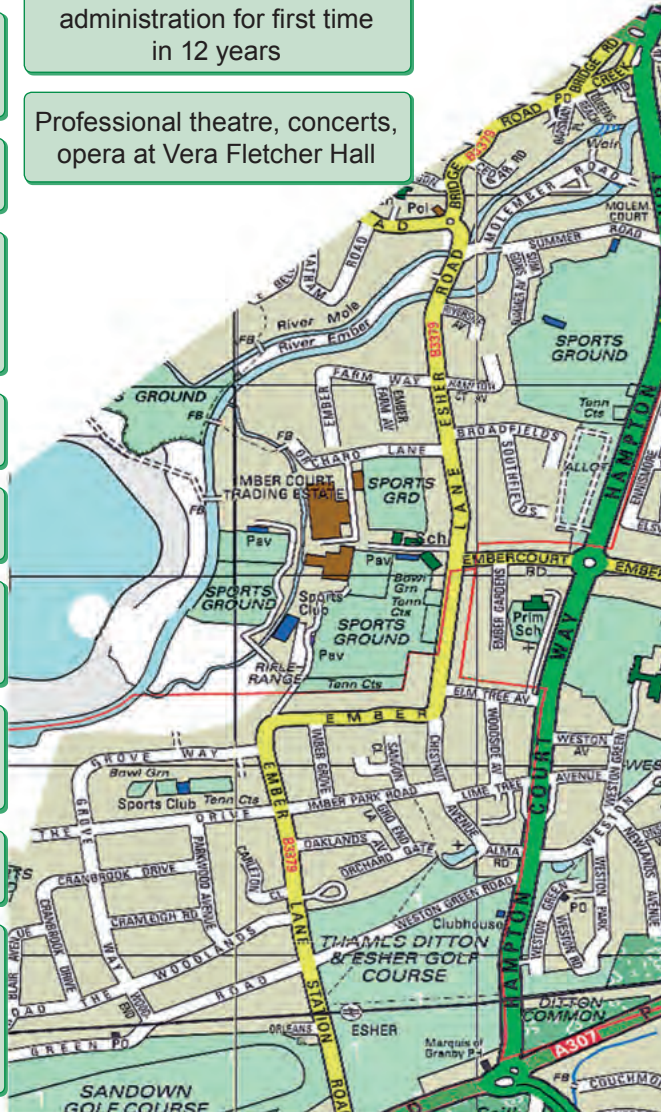
Continuing pressure for maintenance to prevent flooding at Esher station, and to resolve other long-standing flooding problems

Regular Open Meetings to engage with the community on important topics

All RA councillors returned in EBC elections. RA with Lib Dems now control EBC administration for first time in 12 years

Professional theatre, concerts, opera at Vera Fletcher Hall

Constant vigilance
Conservation Area
Belt in Loc...



tion in Action 2016-2017



nce to protect
eas and Green
cal Plan

Successfully campaigned to
retain bus services in Thames
Ditton and Weston Green

5000 copies of Thames Ditton
Today distributed quarterly in
Thames Ditton, Weston Green
and Molesey

RA Councillors represent
interests of local residents to
GP surgeries and the CCG
on health services

Worked to strengthen local
flood risk plans

Successfully campaigned to
retain Molesey Hospital

Planted spring bulbs,
maintained flower beds
and Fountain roundabout,
supported Thames Ditton in
Bloom at the railway station
and festive flags for Queen's
90th and Olympic celebrations

Started Litter Picking
Groups in Weston Green
and Thames Ditton

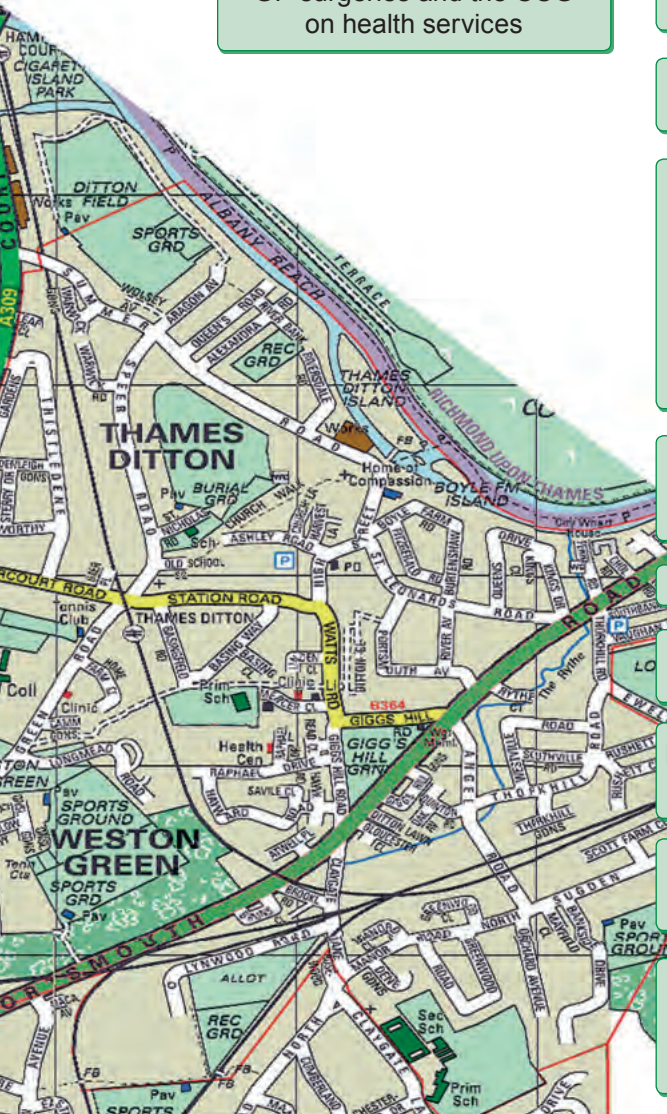
Monthly Farmers' Markets

25 year lease renewals
secured for allotment holders

Laid wreaths on War Memorials
on Remembrance Sunday

New pedestrian path to
Esher Station on Station Road


Continuing support and fund
raising for services for NHS
patients at Emberbrook





Backache?

Osteopathy
Acupuncture
Chiropractic



Neck and Shoulder pain?

It is common, not normal.

Book a free 15 minute consultation before the problem gets worse

Clinics in Thames Ditton & Kingston
020 8786 6367 www.spinaljoint.com

7 Lime Tree Avenue KT7 0NA



SpinalJoint

The Thames Landscape Strategy



Shires grass-cutting at Hurst park with Thames Lansdscape Strategy Chair Peter Hickman and Councillor Karen Randolph

We are all very fortunate to live not only near the river but to live in a village bearing the name Thames. The Thames is one of the most important natural and cultural assets of London. The river has for centuries been a conduit for travel resulting in many historic buildings, commercial and leisure activities. Between Weybridge and Kew the Thames meanders through a unique landscape of parks, palaces and working communities. Centuries of settlement have left a legacy of architecture, public access and nature conservation unparalleled in the rest of the capital.

The Thames Landscape Strategy (TLS) aims to understand this special riverside landscape and to respect its character, both natural and man-made. The strategy draws together the history, topography, culture, politics and wildlife of this remarkable stretch of the river and forms the basis for future policy and design to conserve and enhance the best aspects of the landscape. We are fortunate and privileged to have Sir David Attenborough as our Patron.

The strategy began from proposals drawn up in 1991 by Kim Wilkie, a leading land-

scape designer. He spent three years of daily observation of the river landscape and its history. He believes you can only intervene in the landscape if you understand its history. The strategy was published in 1994, pioneering the belief that policy is realised through partnership of communities and local and national statutory bodies. The TLS brings together a partnership of riparian owners alongside local groups to implement Kim Willkie's vision. Funding for the operation of the strategy is from these bodies, although local authorities along our stretch of river have also been generous in providing much of the funding. David's original vision is still flourishing after 22 years. Sir David Attenborough said that "to survive the bureaucracies, finances, problems and meetings is quite remarkable and a real achievement... and I look forward to continued success."

Projects are the mainstay of the strategy and keep the two full-time employees more than busy. They organise the work of hundreds of volunteers who over the past 16 years have helped with our programme and have amassed nearly 300,000 hours to manage actions on the diverse riverbanks of the Arcadian Thames. These projects are funded by donations, organisations which value the Thames and various bodies which have environmental funds available. We are also grateful for funds from Tesco from the sale of plastic bags.

Restoration of the lost flood plains

Did you know that nearly all of the rainwater that falls on Surrey enters the Thames in Elmbridge, via the rivers Wey, Mole and Ember? (Some water does flow down the Hogsmill from the Epsom Downs to Kingston) It joins the huge quantity of



simon simpson

BA(Hons) MSc MAREBT BABCP UKCP MNRHP

Cognitive Behaviour Therapy
Clinical Hypnosis



Registered with Bupa
and all major insurance
companies

Expert, confidential treatment for:

- Panic
- Workplace Stress
- Low Self Esteem
- Insomnia
- OCD
- Depression
- Anxiety
- Irritable Bowel Syndrome
- Phobias
- Anger

clinics in Esher, Hampton Court and at The London Bridge Hospital

full details at: www.cbt-surrey.co.uk tel: 07801 450 477

water flowing from Berkshire etc. It is no wonder that there are flooding issues as the river runs towards the tidal part at Teddington. Flood risk is increasing and the re-creation of naturally functioning flood plains allows water to be stored during floods and slowly released as river levels drop. Natural wetlands can also be restored for the benefit of us and nature.

The TLS has recently been doing work in Home Park to enable water to flow from the river over the meadows. In this case it is the river Longford, which runs through Hampton Court Palace grounds to the Thames in Kingston via a variety of ditches and streams, many incorporating reed beds. The work involves clearing scrub from the banks, re-profiling the natural depressions and creating sluices to allow the Longford to overflow over low-lying meadows. These meadows are the home of the Household Stud and Hampton Court Shire Horses. Much of the funding for this project has come from the SITA Trust. We believe that this part of Home Park is one of the oldest remaining flood plain drainage systems left in London. We are hoping to do similar work in the Ham Lands near Ham House.

Grass cutting by Shire horses

Cutting grass in awkward places such as tow paths or under trees is a problem, especially if brambles are present. A trial took place in Ham using heavy horses pulling a mower. These are areas where cattle cannot graze and where use of heavy machinery compacts the ground. This trial was an overwhelming success, with the heavy horses coming from the Royal Parks. It is hoped that this method of cutting grass will be used in the Hurst Park Meadows. Last October the horses and equipment were on show and trial cutting took place. Cutting grass by this method will help the biodiversity in Hurst Park. In

this area Graburn Way (which was the start of the seven-furlong track at the old Hurst Park Racecourse) has been improved with help from the Tesco bag money scheme.

Riverside improvements: Albany Reach, Hurst Park, Walton and Weybridge

The natural river bank can be quickly overgrown with scrub, alien trees and rubbish that destroys views, blocks footpaths and restricts water flow. Much of the improvement work is done from the river rather than from the bank. There are two boats that are part of Surrey Care Trust where disadvantaged and challenging children can improve their life chances by helping the environment. These boats are Swingbridge Community Boats and their crews are a great help to us, especially at Desborough Island which is a haven for wildlife, birds, insects, wildflowers and grasses. The work could be seen as unglamorous but it is essential towpath clearance. Without clearance towpaths would become impassable after a short time.

The future

TLS will carry on doing valuable work against a backdrop of falling revenue for local government. The contribution from local government is vital for us to cover core costs and any reduction could be difficult to replace. Elmbridge Borough Council has been an excellent supporter since the beginning and we must ensure that this continues.

To find out more visit the TLS website
<http://thames-landscape-strategy.org.uk>

Peter Hickman
Chair: Thames Landscape Strategy
Surrey County Councillor

RUSSELL-COOKE | SOLICITORS

We can offer you high-quality specialist advice on most legal matters, personal or professional - from employment-related issues to property transactions, wills and estate planning, relationship breakdown and the care and protection of the elderly.

+44 (0)20 8546 6111
www.russell-cooke.co.uk



NEIL EVANS

HEATING & PLUMBING SERVICES

Repairs • Parts • Bathrooms • Boilers • Gas • Plumbing

Local Qualified **PLUMBER** and **GAS SAFE** Engineer



www.neilevansplumber.co.uk

email: neil@neilevansplumber.co.uk

messages: 020 8398 4259 • mobile: 07906 412 170



shop **signs** van **signs** window **signs**
for sale **signs** sticker **signs** frosting
warning **signs** banner **signs** plaques
display **signs** posters **and** more...

flyingcolours call 020 8398 1770

When England ladies played on Giggs Hill Green



Melvyn Hickey and members of the cricket club

Older members of Thames Ditton cricket club were saddened to learn that Melvyn Pignon, a local sporting legend, passed away shortly before the end of last season.

Under her maiden name Hickey she was one of the most famous hockey players of her generation, winning 62 England caps and becoming captain in 1966 and 1967. However, her international career ended in heartbreak and controversy when the England selectors, without any warning, dropped her from the England team in 1968 after she agreed to be named as co-respondent in Laurie Pignon's divorce. Those were different times indeed.

Her relationship with the veteran sports reporter, then a household name, was not widely known. Once it became public knowledge, the selectors took a dim view. She never played for England again.

The famous journalist Laurie Pignon was also a war hero. Captured by the Germans in

the retreat from Dunkirk in 1940 he, and five others, were forced to dig their own graves and face a firing squad. But the guns stayed silent. Instead he was sent to Poland as a PoW, held near Auschwitz doing hard labour in appalling conditions.

A further gruelling trek came in 1945. He and fellow captives were forced on a horrific winter

march to Austria ahead of the advancing Russian army; luckily their guards deserted and they stumbled across an American platoon. Having survived the Second World War he was determined to enjoy every day thereafter – a promise he flamboyantly fulfilled, dying aged 93 in 2012.

The Pignons lived in Sunbury and their first connection to Thames Ditton came at the George & Dragon, where Laurie played snooker under the watchful eye of legendary landlady (and former Windmill girl) Iris Copp and her husband Arthur. Given their sporting background, the cricket club followed swiftly.

Before she married, Melvyn lived on a houseboat on Taggs Island where former teammates recalled numerous late-night parties. She also held posts at St. Teresa's RC Convent in Sunbury and at Ashford Grammar School. She was a tenacious tennis player and long-term member of the Royal Tennis Court at Hampton Court Palace.



WESTON GREEN

020 8398 6027

24 Hour Answerphone

Orthodontics for Children & Adults

Jane Eden BDS(Lon), MSc(Lon), MOrth, RCS(Eng)

Fraser McDonald BDS(Lon), MSc(Lon), PhD, MOrth, RCS(Eng)

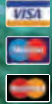
- Gentle and Caring Environment
 - Private and NHS Practices
 - Evening and Saturday Appointments
- Available Privately

PRIVATE Practice:

Yewhurst
Weston Green
Thames Ditton
Surrey
KT7 0JZ

NHS Practice:

Oak Lane
Twickenham
TW1 3PH



www.weston-green-orthodontics.co.uk E-mail: wgop@jeden.freeserve.co.uk

A centre dedicated to
holistic
& complementary
healthcare for all



kent clinic
of natural medicine

We offer a range of therapies that will effectively treat a variety of problems.
One of the many therapies we offer is Gestalt Therapy...

**Are you feeling unappreciated, alienated, misunderstood,
overwhelmed by negative feelings? You feel like nobody is listening
and nobody cares?**

If any of these emotions feel familiar, contact Melanie Friedrich. Gestalt Therapist working towards accreditation is offering therapy/counselling sessions for any age group in the Kent Clinic of Natural Medicine. Play Therapy offered for children.

(Integrative) Gestalt Therapy has a holistic approach which means that it deals with the whole of the client's experience, including feelings, thoughts and actions. It focuses on gaining an awareness of emotions and behaviours in the present rather than in the past. The goal is for clients to become aware of their immediate needs and how to meet them and also to learn to accept and value themselves.

Tel: **07450 056 356** Email: melanie.friedrich@gmail.com

Above Kent Chemist, on 2nd Floor, 104 Walton Road, East Molesey, Surrey KT8 0DL

Crucially, as far as Thames Ditton was concerned, Melvyn was also a member of SPARKS (sportsmen pledged to aid research into crippling diseases) whose previous chairmen included Douglas Bader and Leonard Cheshire. The idea of bringing an England Ladies XI to play Thames Ditton cricket club and raise funds for the charity was entirely her brainchild.

And so in 1970 the great match against England Ladies, captained by another legend, the late Rachael Heyhoe Flint, took place on Giggs Hill Green in front of a crowd approaching 2,000. In a nail-biting finish the visitors scraped home by two wickets. Apart from Rachel, who went on to captain England in the inaugural Womens' World Cup in 1973 when England beat Australia in the final, the team against Thames Ditton included Enid Bakewell. She was an outstanding player, the Ian Botham of her time, averaging nearly 60 runs and taking 75 wickets during 14 years as an England all-rounder.

Bruce Pavey, who captained TDCC at that time, wrote afterwards: *"What particularly impressed me about England was their immaculate stroke play, their throwing in from the boundary into the wicket keeper's gloves, and Rachel Heyhoe explaining that the women knew that 'the box' was a man hole cover."*

Another TDCC player and later vice president, Terry Kyle, recalls that a motorist crashed his car into a parked vehicle on Portsmouth Road because he was so enthralled in the game. He also remembers the England Ladies carrying a blanket around the Green collecting charity contributions.

Thames Ditton vicar's son and thespian Michael Elwyn also recalls the match

vividly. *"I have fond memories of Melvyn and Laurie and can remember the game as if it was yesterday. Huge fun, great opposition and a day never to be forgotten."* He also proudly recalls taking a couple of wickets with his left-arm spin bowling.

Michael, whose long-term partner is that national treasure Alison Steadman, still takes a keen interest in the club and regularly attends the Old Players' Summer lunch. Sadly he had to miss a recent one – after all, he was appearing in "The Audience" on Broadway in New York, playing Anthony Eden to Helen Mirren's Queen Elizabeth II.

I myself did not play in the England Ladies match – I did not wish to be embarrassed by being bowled out by a maiden over. But I was an umpire and can still remember that, although extremely competitive, there was no 'sledging', no disputed umpiring decisions, incoming players were applauded to the wicket, there were frequent shouts of 'good shot sir' or 'madam' – and definitely no questioning the batsmen's parenthood.

As was traditional in those days there were wild celebrations afterwards in a packed George & Dragon. And as landlady Iris shouted out *"Like the Windmill, we never close"* so the revelries continued until first light...

Brian Mitchell

Editor's footnote

The author was elected the Club's Honorary Life Member at its AGM last November. This is believed to be the first time this award has been bestowed since the Club was established in 1833. He joined the club in the early 1960s as a player and went on to become captain, president and, until latterly, a trustee.

I WORK WITH FABULOUS PEOPLE!



Jay Chitnis
Managing Director of HJC

I consider myself particularly fortunate. I have friends who have their own businesses and feel they spend most of their time on staffing issues often negatively. I don't have this problem. **I work with some fabulous people**, most of whom have been with me for many years. I am proud of them because while I own HJC and am responsible for the running of it and the culture within it, I have not had to try too hard to train or coach them regarding the fundamental principle of what we do.

This brilliant group based in the two offices in Thames Ditton and Surbiton grasp instinctively the role we perform and its purpose. To help those who are buying, selling or renting in our areas. To make what could be an emotional struggle be as hassle free as possible. They do this by listening, responding and by caring for those who seek our help.

"People who feel appreciated will always do more than what is expected."

Simon Sinek



Magda Gradowa
Ops Manager
for HJC

When Magda joined me at HJC as my new Operations Manager early in 2016, one of the first things she did was to introduce me to TED talks, specifically a speaker Simon Sinek.

Given Simon is a motivational speaker with specific emphasis on leadership, I wasn't too sure how to take this. But as soon as I watched his ten minute presentation I realised Magda wanted to share some valuable insights into the subject of getting the best out of your people.

I have just closed the Surbiton office over Christmas and New Year for major refurbishment. I have re-branded after many years sensing it was time and in the process decided to upgrade the office environment. But I made this decision after watching Simon Sinek and realising **the people who come to work for HJC do so because they love it and because they get great fulfillment out of making a difference to our clients and customers daily**. After all they spend as much if not more time in the office as they do at home and for this they deserve the reward of the best workplace I can provide.

One other person I would like to thank. **Claire Craig**, who may be known to many Thames Ditton Today readers, is responsible for the renovation of the office in Surbiton. She is a genuinely talented lady and a long standing friend. I am grateful to her for all her hard work and creative skills.

Jay Chitnis



You are invited for the
GRAND RE-OPENING!

We have just finished renovating our Surbiton branch. If you would like to arrange a free appraisal of your home, rent a property or just meet the team, do pop in and have a fresh quality coffee or cup of tea! Email and phones also work but we would love to show you the new office if you have time. We look forward to seeing you soon.

HJC SURBITON
17-19 Brighton Road, Surbiton KT6 5LR
surbiton@hjc.co.uk | 020 8390 9290

HJC
HIGHER VALUES



Brighten up your Garden!

Is your garden in need of a makeover?
From planting plans to a simple injection of colour

Green Room Garden Designs can help
020 8398 5703

Anna 07801 921166 – Kate 07956 641881
RHS and Merrist Wood Qualified

R P Brown Est. 1968 - Traditional, reliable and conscientious local **plumber**

No call out and no minimum charge, free written estimates, 1 year parts/labour guarantee



www.plumb-master.co.uk

Tel: 020 8398 0207 Mobile: 07973 636672



e-mail info@plumb-master.co.uk

56 Speer Road, Thames Ditton, Surrey KT7 0PW



Brittain Hadley is an independent and professional firm of Chartered Building Surveyors offering the following services:

- Residential Surveys and RICS Condition Reports
- Project Management of refurbishment, new build and extensions
- Party Wall Awards
- Planning applications for residential and commercial premises
- Architectural drawing and design services
- Specification of works and building contract administration
- Dilapidations acting on behalf of landlord or tenant
- Advisors on sustainability matters

Tel 020 8742 7704 E-mail info@brittainhadley.co.uk
1 Claremont Road, Surbiton, Surrey KT6 4QR

Sex and the Georgian upper classes

– Lady Almeria Carpenter



A few years ago, while transcribing the pocket diaries of Catherine Lambert, I came across this entry for Sunday 1 September 1799, about fifteen months after the Lamberts had bought Weston House on Weston Green as their country residence for the family: “*Went to Church. Lady Almeria dined with us. The Duke of Gloucester came in the Evening.*”



HRH Prince William Henry, Duke of Gloucester
by von Maron

Gloucester’s track record

This was intriguing. It was not the first time that the name of Prince William Henry, Duke of Gloucester, younger brother of King George III, had cropped up in the parish of Thames Ditton. In his *Tales and Scandals*

of Old Thames Ditton (1968), T. S. Mercer had spotted from parish rates records that in autumn 1772 Maria, Countess Waldegrave, was a named ratepayer for Ditton House, the fine new mansion that Charlotte Digby, owner of Boyle Farm, had built just downstream. And that her name was swiftly followed by that of the Duke next Spring. Mercer connected this local information with that of the earlier secret marriage of the Duke to Maria, a beautiful widow with three children: “*I think that her residence here was probably used for clandestine meetings with the Duke of Gloucester.*”

King George regarded Maria as an unsuitable royal match because of her antecedents. She was the illegitimate offspring of Sir Edward Walpole and Dorothy Clement, the beautiful daughter of a postmaster, apprenticed to a milliner in Covent Garden who arranged her sexual liaison with Walpole. Their offspring Maria, raised as a Walpole, married the Earl of Waldegrave some 21 years her senior, who died in April 1763 of smallpox. The following year the dashing Duke began his pursuit of Maria which culminated in their secret marriage in September 1766, by her chaplain with no witnesses present, at her London house.

Mercer’s conclusion that Ditton House in 1772 was a clandestine love-nest is probably not sustainable. The liaison between Maria and the Prince was well-known, indeed she accompanied Gloucester at social occasions, dressed her servants in lookalikes of the royal livery, and in 1768 was even awarded a pension of £5,000 by the King from his

THAMES DITTON UNITED REFORMED CHURCH

Speer Road – close to
Thames Ditton station

Services at 10.45 on Sundays

Secretary: Mrs Linda Lambert

Tel: 020 8398 1476

Email: lindanmlambert@aol.com

WELCOME TO ALL

Find us at <http://www.tdurc.org.uk>

Hall bookings
telephone:

020 8224 6396



Blue Handymen

Trusted and reliable retired police officers providing high quality handyman services to families, individuals and businesses

CALL TODAY FOR YOUR FREE QUOTE

0800 255 0 255
www.trustinblue.com

Katie Alexiou

— DIVORCE CONSULTANT —

Are you going through a divorce?

I am a former family lawyer based in Thames Ditton and can help guide you through all aspects of the divorce process, either instead of or alongside a solicitor.

If you need some affordable advice about your options but don't feel ready to instruct a solicitor, please get in touch.

Katie's experience shone through and she succinctly gave me all the advice I was looking for.

Katie was an absolute pleasure to deal with; whilst she was knowledgeable in her field, she was also very warm and empathetic and very easy to talk to. I loved the fact that she offered a flexible service that could be tailored to my individual needs.



07956 396528 | katie@katiealexiou.co.uk | katiealexiou.co.uk

Irish revenues (according to the Oxford Dictionary of National Biography). This was despite King George's unhappiness that the Duke had a mistress and his firm position against his brother marrying a subject commoner, being at that stage unaware that he had done just that. At the time of the Ditton House entries, therefore, the scandal was not so much that Gloucester and Maria were not married; but that they were.

The arrival of a daughter in May 1773 prompted Maria to tell her father of her marriage several years after the fact, and Gloucester to come clean with his brother the King. It is possible that out-of-the-way Ditton House meanwhile concealed the pregnancy. Otherwise there seems little reason for Maria and her Prince to have spent much if any time in Ditton House, for they both had other residences in London and near Windsor. By grace and favour of the King, they also had the use of the Pavilions, a handsome set of Thames-side detached houses at Hampton Court. The Pavilions are listed from 1764 in the names of "HRH William Henry, Duke of Gloucester, and Countess Waldegrave, afterwards Duchess of Gloucester."

Lady Almeria Carpenter

Having secured Maria, the randy royal eye turned to one of her ladies in waiting, Lady Almeria Carpenter. She was memorably described in the 1788 Memoirs of Sir Nathaniel Wraxall as "*one of the most beautiful women of her time, but to whom Nature had been sparing of intellectual gifts.*" In about 1780, when she was 28, the Duke began a sexual relationship with her.

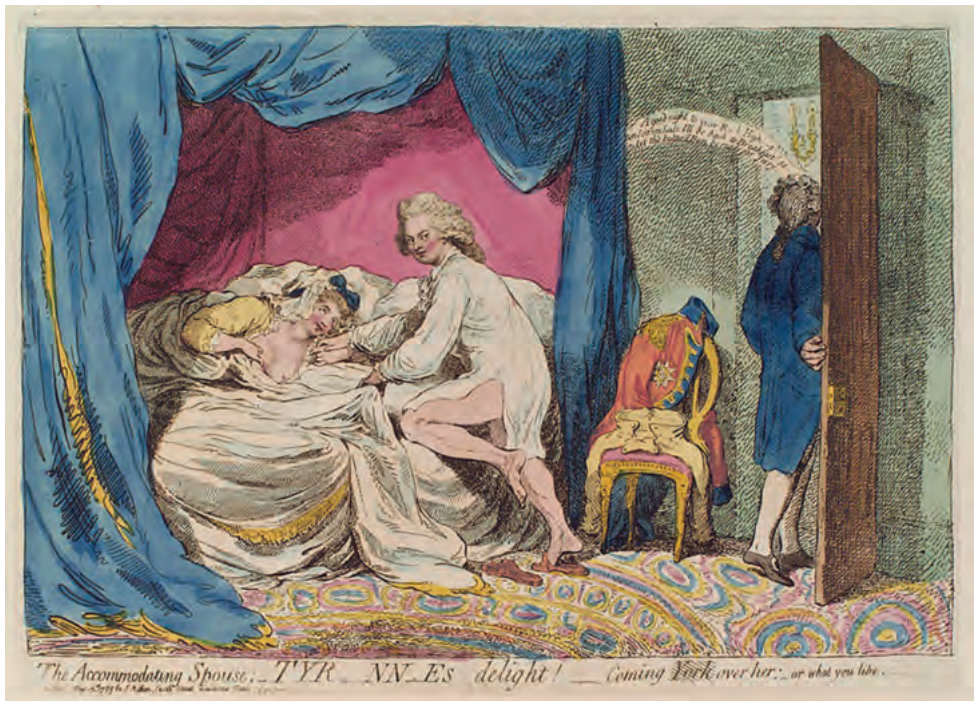
Now Lady Almeria was the daughter of the Earl of Tyrconnel, George Carpenter, who from 1787 owned Claremont at Esher. Her brother, his son George, who later inherited the title and Claremont, had a chequered relationship with women, particularly his



Lady Almeria Carpenter by Cosway

promiscuous first wife, Frances Manners – I don't have space for the merry account of how evidence was gathered for their eventual divorce by Act of Parliament. His second wife Sarah Hussey Delaval turned out no better, for she became the very public mistress of Prince Frederick, Duke of York, Gloucester's elder brother. Yes – a brazen Hussey! Indeed, waspish Wraxall wrote in his later memoirs, released posthumously for legal reasons, that the Earl "*might be said to contribute at this time, more than any nobleman about the court, to the recreation of the reigning family: for, while his wife formed the object of the homage of one prince of the blood, his sister had long presided in the affections of another.*" Small wonder that George Carpenter the second Earl Tyrconnel gave up and retired early to a house at West End Esher. He had, by the way, two illegitimate children of his own.

The Duke of Gloucester was not the first married Prince to establish a *ménage à trois*, nor yet the last, for that in effect is what happened. Lady Almeria bore him a daughter, Louisa Maria named La Coast,



The Accommodating Spouse, by James Gillray, 1789 (as Tyrconnel leaves, the Duke of York disrobes)

who was brought up by Gloucester's steward on a farm at Hampton Court. Encouraged by the King to stay out of the limelight, the Duke and Duchess and Lady Almeria travelled much in Europe between 1783 and 1787. We have a vignette laced with bonking innuendo in the *European Magazine* and *London Review*, for December 1783:

"Lady Almeria Carpenter, while in Italy, rides continually for her health. She took over with her an English horse, that could carry double.

*We are concerned to find that the Duchess of Gloucester has not found much benefit from her residence abroad. The air of Italy has not agreed with her. Lady Almeria Carpenter also, who accompanied the duke and duchess, is complaining -- but her little disorders are attributed not to the air, but simply to **too much exercise!**"*

On return Lady Almeria appears to have gained what one might call the pole position, becoming effectively the hostess at Gloucester House in London, where she was described as the *"ornament and pride,"* with Maria becoming estranged and, after 1787, separated on the Duke's initiative over ostensible disagreement about the education of their daughter. Wraxall's verdict on the Duke was that he was *"scarcely worth securing except for his title, for he was almost entirely destitute of intelligence."* The diarist Horace Walpole recounts that on being urged to converse with the portrait painter Joshua Reynolds, painting the Duchess, all he could think of saying was *"so you always begin with the head, do you?"* And on being introduced to Gibbon, historian and author of the *Decline and Fall of the Roman Empire*: *"What, scribble, scribble, scribble?"* I'm sure you

can think of other princely Dukes famous for that type of one-liner.

The Lamberts and the Carpenters

By the 1790s the affair had doubtless cooled a little but from the number of times the Duke and Lady Almeria are connected over dinner and elsewhere in Catherine Lambert's diaries, they remained close. As well as in Mayfair, Lady Almeria had a house in Long Ditton, as did her other brother Charles Carpenter, a captain in the Royal Navy who saw his share of action and prizes. It is the naval connection that made Catherine's husband Capt. Robert Alexander Lambert a close friend of Capt. Charles Carpenter, and the families no doubt became closer when both rented summer houses in Long Ditton before the Lamberts bought Weston House. Close to the extent that when Charles was posted away on command, the Lamberts were entrusted with his wine cellar; and when he died in 1803, Capt. Robert Lambert and his son Robert Stuart Lambert, also by then a naval captain, were pall-bearers.

The social nexus of Lamberts and Carpenters saw them at many functions; visits to Claremont; rides for Catherine in Lady Almeria's Sociable (a four-wheeled carriage with two hoods, where there was a double seat facing forwards and one facing rearwards so that four passengers would face each other); and dinners at each other's houses. Lady Almeria was a frequent dinner guest at Weston House, often joined by the Duke of Gloucester, who would typically send over a haunch of venison beforehand. Indeed, Catherine's diaries show that the Georgian equivalent of today's gifts of wine, flowers or chocolates when arriving for tea or dinner were more seriously related to the kitchen. Finding food to entertain in an age before shops was not straightforward, and most in their circle had a country place to

generate their own produce (such as Weston House with its grounds and smallholding of 35 acres, or for HRH, the deer of Bushy Park or Cranbourne Chase where he was Ranger). So we find various examples in the diaries from 1798 onwards:

"The Duke of G call'd in the morning & came again in ye Evening. Madame de Rouault & Lady Almeria dined with us. Lady A brought me a haunch of Venison"... "left some Quinces at Lady Almerias"... "Lady Almeria dined with us on a haunch of Venison, sent us by HRH who came in ye Evening."... "sent Lady Almeria & Anne a Pig."... "Lady Almeria brought me a hare."... "I call'd on Lady Almeria Carpenter, took a hive of Bees."

Lady Almeria's own daughter by the Duke, Louisa, is never mentioned, but Almeria evidently brought up her brother's illegitimate daughter Emilia Carpenter, known as Emily. George Carpenter's will specifies her as *"my reputed daughter Emilia, generally with Lady Almeria Carpenter"*. She frequently brought Emily to play or dance with Catherine's two youngest daughters and *vice versa*.

The Duke of Gloucester died in 1805, the same year as Catherine's husband. The last entries in Catherine's diaries concerning Almeria record her death. Saturday 16 September 1809: *"...heard from John & Sam, & from Anne that poor Lady Almeria died on Wednesday."* She was in her 52nd year. Catherine went to the sale of Almeria's effects in London for each of its three whole days. Reports of litigation several years later revealed that in her later years, Lady Almeria Carpenter had contracted some very substantial gambling debts which she was unable to pay off.

Poor Lady Almeria? You decide...

Keith Evetts

Solution to the Winter Crossword

by Michael Jackson



	C	O	M	P	A	N	I	O	N	S	H	I	P	
U		R		A		E		S		A		V		C
N		D	A	N	G	E	R	M	O	N	E	Y		R
I		I		T		D		O		T				Y
T	A	N	G	O		L	A	S	P	A	L	M	A	S
E		A		M		E		I				A		T
D	I	T	T	I	E	S		S		B	A	S	R	A
N		I		N						U		T		L
A	N	O	D	E		H		A	N	T	W	E	R	P
T		N				O		B		T		R		A
I	N	S	U	L	A	T	E	D		E	X	P	E	L
O				A		F		O		R		I		A
N		P	E	R	F	O	R	M	A	N	C	E		C
S		E		G		O		E		U		C		E
	O	P	P	O	R	T	U	N	I	T	I	E	S	

Congratulations to the senders of the first three correct entries opened in the shuffle. Each wins a £5 voucher to spend in local shops.

Malcolm Hughes,
81 Ember Lane
KT10 8EG

K Yale
Flat 3, Gibson Court
KT10 0AW

Mr Mahadev
44 Thistledene
KT7 0YJ

Alan Greenwood & Sons

Quality Funerals at a Fair Price



- A choice of the latest Jaguar or Mercedes Hearses and Limousines
- Home visit arrangements
- Pre-paid funeral plans
- Memorials
- Quality Service 24 hours day



57 Fleece Road,
Long Ditton
KT6 5JR

1 The High Street
Claygate
KT10 0JG

13 Molesey Road
Hersham
KT12 4RN

259 Ewell Road
Surbiton
KT6 7AA

020 8398 0012

01372 377 377

01932 260 046

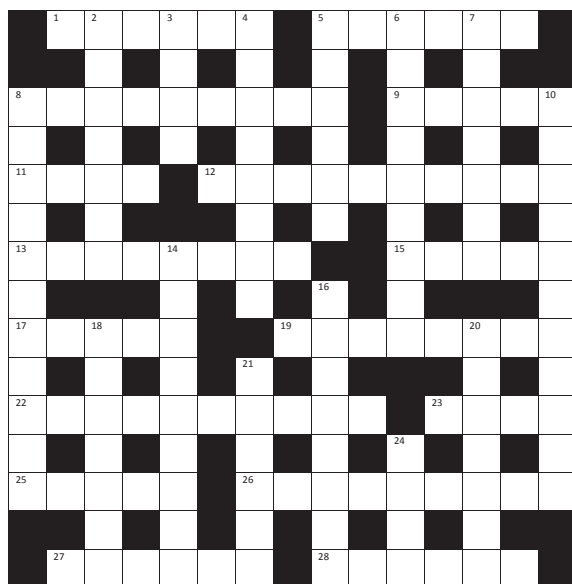
020 8399 4455

Visit Our Website for Full Details of Our Services and to View Our Obituaries

www.alangreenwoodfunerals.com

Spring Crossword

by Maureen Willcox



The first three correct entries randomly opened after the closing date 5 May 2017 will win a £5 voucher to spend in local shops.

Please send the completed puzzle (or photocopy) enclosing your name and address, to:

Thames Ditton Today Crossword
24 High Street
Thames Ditton KT7 0RY

Maureen Willcox is retiring as a 'crossword compiler'. We thank her for the pleasure she has given us all. If you would like to have a go at crossword compiling please contact: editor@residents-association.com

ACROSS CLUES

1. Change in the closet where one feels better (6)
5. Official inspection of business accounts (6)
8. Devotes to a special cause (9)
9. Can be seen prowling the churchyard! (5)
11. The best way to handle a Dalmatian (4)
12. A peacemaker in this country (7,3)
13. The speed of movement (8)
15. To inspire with ideas (5)
17. Reg always respects royalty (5)
19. Where gin gets one tied up in knots (8)
22. Even a stupid idiot could answer this clue (10)
23. A family one reveals who's who (4)
25. A bet when winnings equal staked amount (5)
26. Become less and eventually disappear (9)
27. When attacked poor Des lay down and died (6)
28. That's torn it !! (6)

DOWN CLUES

2. This person is not even an eccentric (3,4)
3. Wear away with acid (4)
4. Have a treat in USA and get soaked (8)
5. Valuable items worth having (6)
6. Depriving someone of possessions (9)
7. Hail in, but a 514 is cheaper (4,3)
8. Midwives ultimate duty (11)
10. Offspring of one's sibling (6,5)
14. Cruelly disregard others (9)
16. Though extinct, this is around still! (8)
18. Give a mane a fish to become well-bred (7)
20. A neighbourly row amongst houses! (7)
21. Put on bread – then put on weight (6)
24. Good for a starter (4)

SERVICES, GROUPS, CLUBS, AND SOCIETIES

SERVICES

Cheer (Concern and Help for East Elmbridge Retired)	Harry Livesey	01372 879321
Dittons & Weston Green NeighbourCare	Frankie Bell	07790 472993
Elmbridge Borough Council Community Support Services		
Thames Ditton Centre for Retired People	Mon & Thurs	020 8398 5921
Thames Ditton Children's Centre	Tues, Weds, Fri	020 8398 3772
Meals on Wheels, Community Transport, Dial-a-Ride,	ask for service at central	
Alarm & Telecare services, Relief Carers	switchboard	01372 474474
Homesupport Elmbridge	Pam Howard (Manager)	01932 267128
Esher and District Stroke Club	Ann Pollock	020 8398 6132
Voluntary Action Elmbridge	Sally Dubery	01372 46358
Surrey Youth and Adult Education Service	Elmbridge Area	020 8979 8334

GROUPS

Girl Guiding in TD & WG	Mrs K Williams	020 8398 1300
1st Thames Ditton Brownies	Mrs. Bronach Hughes	020 8398 1628
3rd Thames Ditton Brownies	Deborah Daoud	020 8398 5521
2nd Thames Ditton Rainbows	Alexandra Lyall	07779 616463
1st Weston Green (All Saints) Scout Group	Carole Needham	07975 842423
1st Weston Green Guides (All Saints)	Mrs. Louise Lewis	020 8398 4843
2nd Thames Ditton Guides	Mrs. Bronach Hughes	020 8398 1628
1st Weston Green Brownies (All Saints)	Mrs K Williams	020 8398 1300
2nd Weston Green Brownies	Mrs J Epps	020 8395 0595
1st Weston Green Rainbows	Mrs Helen Hill	020 8398 3135
4th Thames Ditton Ajax Sea Scouts	Alison Derrick	020 8398 0041
Dittons Scout Group	Laura Clarke	020 8398 3447
Coffee and chat (United Reformed Church)	Mrs. E. Barker	01372 467491
Emberbrook Trefoil Guild	Mrs. Adrienne Nealing	020 8398 5582
Friends of Bushey and Home Parks	Jean Smith	020 8977 9391
Friends of Walsingham Care	Miss Valerie Chicken	020 8398 2932
Molesey and Dittons Neighbourhood Watch	Chairman: John Haberfield	020 8398 5256
Parents and Toddlers(St Nicholas church)	Information	020 8398 7211
Ripieno Choir	Nick Harris	020 8399 7231
Surrey Bell-ringers	Giles Andre	020 8979 1994

CLUBS

Albany Motor Yacht Club	Secretary	01784 466651
Arts and Heritage Club	Carol Butcher	01932 867511
Claremont PROBUS Club	Mr. P. Collins	020 8398 3125
Claygate Bridge Club	Hon. Secretary	020 8398 1710
Colets Health & Fitness	Giordano Orsini	020 8398 7108
Dittons Skiff and Punting Club	Hon Secretary	07710 139417
Dittons & Hinchley Wood Royal British Legion	Hon Secretary	020 8398 6263
Ember Players (Drama) Ember Sports Club	Anne Segall	020 8941 4528

Ember Sports Club	Zenda Hedges	020 8398 7038
Ember Sports Club: Bowls	Sylvia Jones	01932 788701
Ember Sports Club: Croquet	Dr. David Cooke	01932 862841
Ember Sports Club: Tennis	Annabel Duncan	020 8786 6318
Esher Bowling Club	Roger Cooper	01372 468109
Esher Bridge Centre	Paul Whicker	01372 460157
Esher Camera Club	Billy Buchanan	020 8398 3169
Esher 41 and Ex-Round Tablers' Club	Dr. R. Tudor-Williams	020 8398 0108
Folk Dance Club	Pam Phillips	01372 373745
Hinchley Wood / Dittons PROBUS Club	Geoff Francis	01932 867771
Long Ditton Cricket Club	Nigel Hardy	020 8398 8361
Long Ditton Garden Club	Heather Harvey	020 8398 2642
Model Railway Society (Hampton Court)	Secretary	01932 241224
Mothers Union (All Saints)	Jill Cotter	020 8398 4598
Old Cranleigh Rugby Club	Tony Price	07801 837129
Old Cranleigh Hockey Club	Simon Marshall (Men)	07801 737695
	Helen Hawes (Ladies)	07771 557900
River Club (BMYC)	David Walker	0870 460 3586
Rotary Club, Esher	Geoff Morris	01932 868454
Rubber Bridge TD Lawn Tennis Club	Val	020 8399 9972
Surbiton Croquet Club	Alec Thomas	020 8398 2391
Surbiton Golf Club	Secretary	0208 398 3101
Surbiton Hockey Club	Secretary	020 8398 2401
Thames Ditton Lawn Tennis Club	Chris Lewis	07770 562569
Thames Ditton & Esher Golf Club	Mark Rodbard	020 8398 1551
Thames Ditton Squash Club (Colets)	Dave Peck	020 8398 7108
Thames Ditton Cricket Club	Howard Frish (Secretary)	07947 561449

SOCIETIES AND ASSOCIATIONS

Ember Choral Society	Linda Bridges	020 8399 5402
Esher Recorded Music Society	Miss S. M. Garrat	020 8398 8541
Esher and Molesey Garden Society	Chris Walker (Sec)	020 8398 6651
Esher and District Amnesty International	Cherry Eddy (Campaigns)	020 8398 4377
Hampton Court Way Allotment Association	Lettings: Piotr Hennig	020 8398 5358
Long Ditton Youth Club	Toni Izard	07749 633973
Lynwood Allotment Association	Gill Vickers	www.lynwoodallotments.btck.co.uk 020 8398 4870
Molesey and District Antiques Society	Linda Lambert	020 8398 1476
NADFAS (Decorative & Fine Arts) Kingston	Mrs. Valerie Windsor	020 8549 9967
Soroptimist International (Kingston District)	Secretary: Pat Harman	020 8390 3507
Thames Ditton Women's Institute (W.I.)	Secretary	020 8398 8615

OTHER

Cancer Research UK	Mrs. Vivienne Harris	020 8398 6787
Elmbridge Fairtrade Network	Judy Porter	020 8398 6401
University of the Third Age (U3A)	Hon Sec Anne Brown	01932 881633
Vera Fletcher Hall	Lettings: Fiona Evers	08456 528 529
	Membership: Sue Morris	020 8224 0980

Please contact the Editor to amend these listings



VERA FLETCHER HALL APRIL 2017

Tickets online at www.verafletcherhall.co.uk or by phone on 0845 680 1926 or by post with a cheque made payable to Vera Fletcher Hall Association with SAE to VFH Box Office, 8 Copsem Lane, Esher KT10 9EU. Discounts available for groups of 10+



**SUNDAY 23RD APRIL
7.30 PM**
Commedia Opera presents

MADAM BUTTERFLY

Puccini's Madam Butterfly is among the most popular in opera repertoire. The tragic story of the geisha who enters into a marriage contract with an American naval officer, who later abandons her, for an American wife. Commedia Opera is making a welcome return to the VFH.

Tickets: £15 (under 16s free)
www.commediaopera.com

**FRIDAY 28TH APRIL
7.30 PM**
Derek Grant presents

BLOWIN' IN THE WIND

Celebrating the music of Joan Baez, Joni Mitchell, Bob Dylan and John Lennon. When Joan Baez, Joni Mitchell and friends sang songs of love, the times certainly were a changin' ... A terrific evening of unforgettable music from **Andante** featuring **Vee Sweeney** and **Mark Rowson**.

Tickets: £16
www.blowinthewindtour.co.uk



Classes at the Vera Fletcher Hall

The hall hosts a variety of weekly classes including yoga, meditation, pilates, Zumba, Bounce, Kumon, Catch-a-balls and Mummy and Me Ballet. It is the perfect venue for classes, workshops and social events of all kinds and has a well-equipped theatre for hire for concerts and theatrical performances. All details via the website.

Antique Clock Restoration & Repair

Specialising in Grandfather, Dial,
Bracket and Carriage Clocks

Contact: Mark Rowe M.B.H.I
BADA Diploma. Member of the Watch &
Clockmakers Guild. West Dean Diploma.



Tel: 020 8605 0331

www.theclockgallery.co.uk

Additional Restoration services available
for Watches, Books, Ceramics and Fine Furniture.

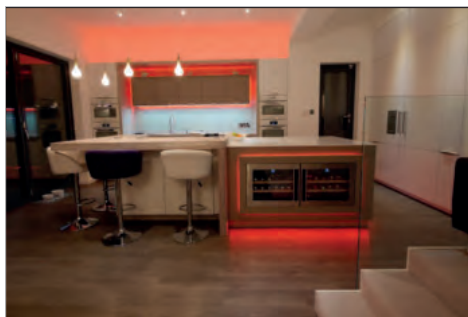
Antique Clocks also bought and sold.

Elaine@Esher

Holistic Nutritionist & Reiki

Arthritis, IBS & digestive disorders,
eczema, hormonal imbalances,
CFS/Fibromyalgia & autoimmune
conditions

Facebook: Elaine at Esher
0743 489 4668
else.davis@gmail.com
£80 per hour consultation



MOORE
By Design

PROFESSIONAL KITCHEN DESIGN

The Hersham Centre, Hersham

T: 01932 379076

New online gallery with 150 images...

www.moorebydesign.co.uk

Karen's Angels

The All Needs Carers



Karen's Angels is a friendly local care
company, operating in Surrey.

We provide professional 24 hour care, social
and personal care services.

We are very proud of the excellent reputation
we continue to achieve with our customers,
their families, local authorities, GP's and DN's.

For further information please contact

Karen/Andrea
02082247848
07760220604

Thinking of Selling or Letting your property?

Then why not speak to the local experts,
our credentials speak for themselves:

- 125 years experience in estate agency
- No.1 on Rightmove
- The biggest market share of sold property on Zoopla
- Six closely linked local offices
- A long standing reputation for honesty and transparency demanding exceptional standards from our highly experienced, knowledgeable staff
- In-house Financial advisor

One of our friendly team is always here to advise you



Nicola Ashworth
Branch Manager



Anna Jones
Sales Negotiator



Karen Martin
Sales Negotiator



Becca Stoner
Lettings Negotiator



Alison Brown
Sales Administrator



Raj Jandu
Financial Consultant



Thames Ditton Residential Sales & Lettings **020 8398 2500**

www.hawesandco.co.uk

Offices also at: SURBITON, NEW MALDEN, RAYNES PARK, WIMBLEDON BROADWAY & WIMBLEDON VILLAGE