

THAMES DITTON TODAY

THAMES DITTON • WESTON GREEN • EAST MOLESEY



THE MAGAZINE OF THE
THAMES DITTON & WESTON GREEN RESIDENTS' ASSOCIATION

S P R I N G 2 0 1 8



FEEL FITTER, HEALTHIER, HAPPIER WITH COLETS!

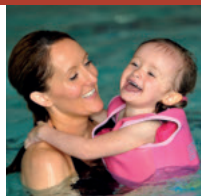
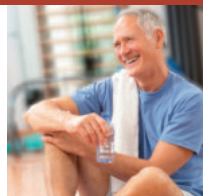
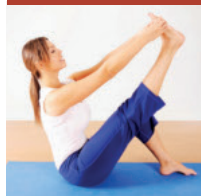
Join a great club where the focus really is on you.

By re-investing our profits, we've not only got a club to be proud of, but happy members too!

NEW for 2018 - be inspired!

Our new boditrax™ scanner measures, records & tracks your body composition. Great for motivation & monitoring your results. FREE as part of your membership.

CALL NOW TO BOOK YOUR FREE TRIAL*



020 8398 7108

St Nicholas Road • Thames Ditton • KT7 0PW | info@colets.co.uk

*T&C's apply. Age 18+ only.

CELEBRATING

40 YEARS OF
COLETS
www.coletshealthclub.co.uk



THAMES DITTON TODAY

Published quarterly since 1970

Editorial Team

Libby MacIntyre & Sandra Dennis
editor@residents-association.com

Magazine Design

Guy Holman
24 Angel Road
Thames Ditton
020 8398 8727

Distribution

David Youd
6 Riversdale Road
Thames Ditton KT7 0QL
020 8398 3216

Advertisement Manager

Verity Park
20 Portsmouth Avenue
Thames Ditton KT7 0RT
020 8398 5926

Contributors

You are welcome to submit articles or images. Please contact the Editorial Team well in advance of the next deadline May 4.

Advertisers

Thames Ditton Today is delivered to an influential 5000 households throughout Thames Ditton, Weston Green and East Molesey. Contact Verity Park for rates for full page, half and quarter page advertising.

In this Issue:

News from the Residents' Association	7
Update from Nick Darby, our Surrey County Councillor.....	11
Secret Gardens of Thames Ditton – Can you help?	13
Heathrow Consultation – Have your say	15
Men in Sheds, shoulder to shoulder	17
Flooding in Thames Ditton – An update.....	19
Dying for a drink?	21
St. Nicholas needs you – Please be a Friend.....	23
Your Residents' Association in Action 2017 – 2018	24
Janet Turner: Leisure and Culture	26
Sad farewell to the Rocking Reverend.....	31
All Saints Weston lunch club	32
Probus – Friendship, fellowship & fun in retirement.....	33
Lock burglars out	35
The Speers and the Sandys – Dynasty of Taxmen. Part 4.	37
Winter crossword solution	42
Spring crossword.....	43
Services, Clubs, Societies and Groups.....	44
Theatre in Thames Ditton	46
Cover photo credit: <i>Sandra Dennis</i>	

www.residents-association.com

Officers and staff of the Association are volunteers, but we must fund costs of this magazine, administrative and election expenses, and other expenses such as spring bulb-planting and village Christmas trees. The subscription is only £5 per household. If you can contribute more, please do so. Subscriptions can be paid via our website www.residents-association.com; subscriptions (in an envelope please) may be left at Boots Pharmacy, 14 High Street, Thames Ditton or Thorhill Road Pharmacy, 94 Thorhill Road, Thames Ditton. Or mail to Membership Secretary Peter Haynes at 6 Onslow Gardens, Thames Ditton KT7 0JJ. Thank you.

cate michaels

BA (Hons) PGCE

english tuition

Thames Ditton based



- ✓ English Language and Literature
- ✓ Common Entrance
- ✓ GCSE and A-level
- ✓ GCSE / A-level Examiner
- ✓ Key Stages 2-5 (Years 3-13)
- ✓ Enhanced DBS/CRB

t: 020 8398 9445 e: cmenglishtuition@gmail.com

A photograph of a group of young girls in gold sequined dresses, smiling and posing on a red stage. The text 'DanceCraft M&M' is overlaid in a stylized font with stars. A quote is written in the top right corner.

DanceCraft
M&M

"We believe that by encouraging our pupils to love dance and enjoy their classes it will not only be exercise for the body but for their hearts and minds too."

Specialists in Dance & Performance training for Pre-school to Junior aged children.

Classes in Esher and Thames Ditton.

Contact: Mary or Maria at marydancecraft@hotmail.co.uk
Telephone: 0791 5698251
Or visit our website: www.mmdancecraft.com



THAMES DITTON AND WESTON GREEN RESIDENTS' ASSOCIATION

Annual General Meeting

8.00 pm on 20 March 2018
at Vera Fletcher Hall

Agenda:

- 1. Minutes of the 2017 AGM Meeting** and matters arising
- 2. Chairman's Annual Report;** receive, discuss and adopt the Annual Report for 2017-2018
- 3. Accounts:** To receive the accounts for the year ended 31 December 2017
- 4. Appointments:** to receive nominations and appoint officers and an auditor: President, Chair, Vice Chair, Hon Secretary, Hon Treasurer, Auditor
- 5. Elections:** to adopt candidates for the Elmbridge Borough Council Election 3 May 2018
- 6. Resolutions:** to consider any resolutions submitted in writing to the Secretary by 6 March 2018
- 7. Guest Speaker: Dr. Terry Gough M.V.O., Head of Gardens & Estates Historic Royal Palaces Illustrated talk:** "The Historical Development of Hampton Court Gardens"

President: Martin Wilberforce,
7 River Avenue, Thames Ditton 020 8398 4732

Vice President: Peter Hickman,
3 Elmbridge Lodge, Weston Green Road
Thames Ditton 020 8339 0931

Surrey County Councillor: Nick Darby,
12 Basing Close, Thames Ditton 020 8398 2382

Thames Ditton Councillors

Tricia W. Bland,
29 Station Rd., Thames Ditton 020 8339 0485
Ruth Lyon,
11 Riversdale Road, Thames Ditton 020 8398 3396
Karen Randolph,
Deepfield, Giggs Hill Road,
Thames Ditton 020 8398 5005

Hinchley Wood & Weston Green Councillors

Tanna Shipley, 'Clinton House'
27 Lower Green Road, Esher 020 8398 2484
Janet Turner, 2 Montgomery Ave,
Hinchley Wood 020 8398 1565
Nigel Haig-Brown
53 Heathside, Esher 020 8398 4060

Officers

Chair: Graham Cooke
23 Ashley Road, Thames Ditton 020 8398 8509
Vice-Chair: Libby MacIntyre,
24 High Street, Thames Ditton 020 8398 5534
Hon. Treasurer: Christa Silverthorne
62 Thorkhill Road, Thames Ditton 020 8398 7101
Hon. Secretary: Florian Traub,
Longmead Road, Thames Ditton 020 8224 2880
Membership Secretary: Peter Haynes
6 Onslow Gardens, Thames Ditton 020 8398 6019

Conveners of Sub-Committees

Health and Community: Karen Randolph (see above)
Planning: Rhodri Richards,
Ditton Cottage, Giggs Hill Road,
Thames Ditton 020 8398 4962
Highways, Drainage: Andrew Roberts,
1 Boyle Farm Road, Thames Ditton 020 8786 6882
Flooding: Tony Thompson,
Willow End, River Bank, Thames Ditton 07736 677671



The Next Residents' Association Open Meetings are
Tuesday 20 March 8pm (AGM) – Vera Fletcher Hall, Thames Ditton
Tuesday 24 April 8pm – Vera Fletcher Hall, Thames Ditton
All who live or work locally are welcome

PAINTERS & DECORATORS

We are residential painters and decorators with 20 years experience, we offer wallpapering, painting and paint effects for internal and external decorating

We work in a clean and efficient manner, causing minimal disruption in your home and come highly recommended



Painters and Decorators

Contact Clive Hogg
to discuss your
decorating needs

020 8339 0712

m: 07957 582296

e: clive.hogg.ch@gmail.com

15 Hampton Court Avenue, East Molesey, Surrey, KT8 0BG

SCIENCE TUITION

A Level & GCSE Tuition

**Biology, Chemistry
& Physics**

Tel: 020 8398 7365

**Alan Tucker:
2 Gainsborough Close,
Esher KT10 8JR**

**alan@asbtucker.co.uk
Enhanced CRB**

MICHAEL MOULE ANTIQUES

CONSTANTLY REQUIRE THE FOLLOWING ITEMS

All Furniture Pre 1920, Silver and Silver Plate,
Brass and Copper, All Clocks, Porcelain, Bronze
and Marble Statues, All Paintings, Gold Jewellery,
Old Dolls, Books, Pewter, Swords, Curios.

ANYTHING OLD AND UNUSUAL

For a fast and friendly service do not hesitate to
telephone any time, with absolutely no obligation.

IMMEDIATE CASH SETTLEMENT

020 8398 8072

26 Basing Way, Thames Ditton

News from the Residents' Association to end-February



Help available to save lives – public access defibrillators

Thanks to our Surrey County Councillor Nick Darby the community now has 24-hour access to a defibrillator outside Thames Ditton Library, in close proximity to the cricket club, and another one outside Manny's Convenience Store on Fleece Road, Long Ditton. These are in addition to the defibrillator in place outside the church hall at All Saints Weston, Weston Green.

Defibrillators are very easy to use. The machine gives clear spoken instructions and you don't need training to use one. Take time to make a mental note of where our community defibrillators are located – it may help save someone's life.



Public use defibrillator

Train timetable consultation

The RA submitted a response to the time table consultation initiated by South Western Railway (SWR); it can be read on our website www.residents-association.com

As reported in our winter edition, SWR intends to make changes to its timetables

affecting all routes on the SWR network. The RA is urging SWR to offer further improvements on the Thames Ditton/Hampton Court line, particularly for commuters during the peak hours by adding fast trains and better connections at Surbiton. SWR is currently seeking approval from the Department for Transport and Network Rail before publishing the revised timetables this spring, to take effect from December 2018.

What's in a name... historic names for new roads on the former Imber Court Trading Estate

RA Councillor Ruth Lyon researched Imber Court's history to suggest names for the five roads on the new estate off Orchard Lane.

The names are: Orchard Farm Road, as Orchard Farm lay on the site in the 19th and early 20th century; Carleton Road, after Sir Dudley Carleton who in 1631 built a new Ember Court House from designs by Inigo Jones and brought lime trees from The Hague for the garden; Bridges Road, Henry Bridges lived at Ember Court from 1711 to 1725 and built the six almshouses in Station Road, Thames Ditton; Corbett Road, Charles Joseph Corbett lived at Ember Court between 1862 and 1882, he was a benefactor of St. Nicholas Church and Thames Ditton village school; and Winston Close, in 1919 the Metropolitan Police bought Imber Court as their training establishment for police dogs and the horses of the Mounted Police. The most famous horse was Winston, ridden first by King George VI and then by Elizabeth II at every Trooping the Colour ceremony from 1947 to 1956.

The People's Path

The People's Path at All Saints Church, Weston Green, continues to gather momentum. The scheme to build a new pathway of engraved bricks within the grounds of All Saints Weston by Marney's pond has created significant interest from people both within the parish and beyond. Members of the community can order a brick to be engraved with a bespoke message reflecting their connection to Weston Green and marking what is important to them. Anyone from the community interested in sponsoring a brick, please visit www.allsaintsweston.com

Elmbridge Local Plan

Publication of the proposals for the revised NPPF (National Planning Policy Framework), below which local policies sit, has been delayed and is now expected in March. The next consultation on Elmbridge's new Local Plan is planned to take place in late summer/autumn of this year. This will provide details of the proposed vision and strategic policies, including site allocations and designations, for the proposed New Local Plan.

There are currently a number of evidence-gathering projects being conducted by Elmbridge Borough Council, both internally and externally. These are required to ensure that the council has the necessary evidence to demonstrate how and where the development of the new homes which the government is requiring councils to accommodate can take place. Some of this has already been provided in response to the earlier consultation last year.

Planning

The RA has submitted an objection to plans for four houses on the plot of **7 Embercourt Road and neighbouring gardens** (2017/4062), in response to a

number of residents' concerns which were raised in our open meeting on January 30. This backland development of large four-bedroom houses is very cramped with a narrow access drive and is out of keeping with the area. Elmbridge as a whole is not short of four-bedroom and above houses and such developments do nothing to assist in meeting local housing needs.

The RA has objected to plans for a large house to the rear of **The Spinney on Weston Green Road** (2017/3414) for similar reasons, again in response to residents' concerns raised at the same meeting. Additionally, the proposed development on this plot would cause significant shading to the grass courts at the lawn tennis club, potentially putting their viability at risk. The courts are an essential part of the character of the local area, having been there since 1882, and should be protected from such threats.

Finally, we note the application for a change of use at the former Mehra's/Wine Rack at **12 High Street in Thames Ditton** (2018/0061), to allow for a Costa Coffee café/shop. The application currently has eleven objections and six comments in support.

Farmers' Market

To celebrate the first Thames Ditton Farmers' Market of 2018 on Saturday 24 February, Radio Jackie provided music and entertainment, joining the fantastic array of food and drink stallholders plus arts/crafts and community stalls. Mark your diary with the rest of the year's Farmers' Market dates with the free 2018 calendar inside this issue of Thames Ditton Today.

Thames Ditton In Bloom

Our village gardening initiative is growing! On Sunday 4 March Thames Ditton In Bloom volunteers are joining forces with Boyle Farm residents to plant out

the neglected bed and planters near the High Street entrance of the Home of Compassion.

Our next planting day at Thames Ditton Station takes place on Sunday May 13, from 10am. If you'd like to help plant the 23 planters and 12 wheelbarrows please contact Tricia tdwgra@the-blands.co.uk



Selection of Boomerang Bags

Boomerang Bags!

Eight independent shops in the High Street are now stocked with Thames Ditton Borrow & Bring Back Boomerang Bags.

The sewing bees, headed by the amazing Thames Ditton Crafters, have made more than 600 so far from donated materials.

To help drive the initiative forward the scheme obtained funding from Surrey County Council for 10 sewing machines which have been donated to Thames Ditton Junior School, Hinchley Wood Secondary School and the Guides, and the students will be making more bags to keep up with demand. The ultimate aim is to make Thames Ditton High Street a plastic bag free zone. All who would like to help (no sewing experience necessary) are very welcome to attend sessions at The Crafters' Hangout, in the George & Dragon Car Park every Tuesday morning, 10am-12.30pm.

To find out more contact: Tricia tdwgra@the-blands.co.uk or Jenny jenny_avon@live.com

RA subscriptions

A modest rise in the RA subscription (the first for 12 years) in order to cover some increased costs was agreed at our Open Meeting in January. Subscription leaflets can be found in this magazine and subscriptions can be paid on line at www.residents-association.com

Dates for your diary

Farmers' Market

George and Dragon car park
from 9am – 1pm
Saturdays; March 24, April 28, May 26

Weston Green Litter Pickers

Meet at Marneys pub on the first Saturday in the month at 10.30am

Thames Ditton Litter Pickers

Meet on the third Saturday of the month at the George & Dragon at 11am

Bereavement Café

All Saints Church Hall 10.30am – 12.00pm
first Tuesday of the month. Just drop in.
Next dates March 6, April 3.

Thames Ditton in Bloom planting day

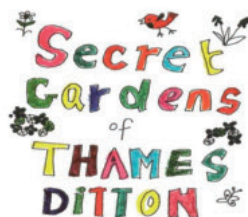
Thames Ditton Station
Sunday May 13 from 10am.

The Dittons Fair

Sunday May 13 from 1pm.

Secret Gardens of Thames Ditton

Sunday June 17, 2pm – 5.30pm



R P Brown Est. 1968 - Traditional, reliable and conscientious local **plumber**

No call out and no minimum charge, free written estimates, 1 year parts/labour guarantee



www.plumb-master.co.uk

e-mail info@plumb-master.co.uk

Tel: 020 8398 0207 Mobile: 07973 636672

56 Speer Road, Thames Ditton, Surrey KT7 0PW

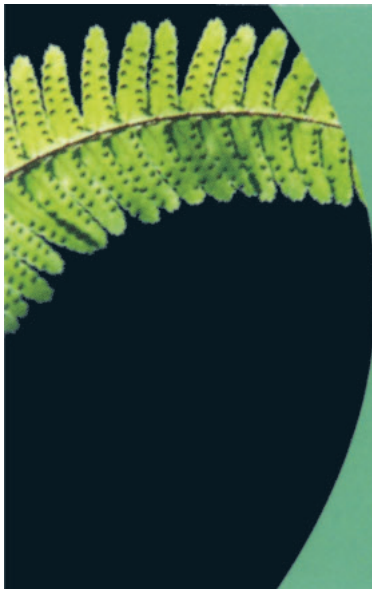


Brighten up your Garden!

Is your garden in need of a makeover?
From planting plans to a simple injection of colour

Green Room Garden Designs can help
020 8398 5703

Anna 07801 921166 – Kate 07956 641881
RHS and Merrist Wood Qualified



M.P.B. Landscapes

All aspects of work undertaken:
hard and soft landscaping, patios,
fencing, decking, brickwork, turfing.

Mark Blunden

Landscaping since 1993
fully qualified, Merrist Wood trained
Tel: 020 8398 3509
Mobile: 07957 281 748
E-mail: markblunden@yahoo.co.uk

Update from Nick Darby, our Surrey County Councillor



First I have various bits of good news...

Community allocation allowance

Residents may know that each County Councillor has a Community allocation allowance (in 2017/18 £6,000) which can be put to good causes in their area. I am thrilled to report that I was able to use part of mine to allow the defibrillator in the Thames Ditton Library on Mercer Close to be moved from inside the building to a prominent position outside at the front. This will enable it to be used 24/7 rather than only during library opening hours. No training is needed before use, as the device itself has recorded instructions. I was also able to provide a defibrillator outside Mannys Convenience Store in Fleece Road, Long Ditton.

In addition I used the fund to contribute towards the Thames Ditton Christmas fair, the Long Ditton Christmas trees, and the Thames Ditton scheme to allow our High Street to become plastic bag free.

Following pressure from our Independent group on the Conservative administration at County Hall earlier in the year, Surrey County Council has now made changes to the allocations. The annual £6,000 has been reduced to £5,000 for 2018/19, but then up to £7,500 in 2019/20, and £10,000 the year after.

New Highways allowance

There is a new Highways allowance (per Councillor) of £7,500, increasing to £10,000, then £15,000, and additionally an annual lump sum of around £100,000 for the Elmbridge-wide Local Committee, increasing annually, also for highway works.

These sums are very welcome, though inevitably not enough.

I would greatly welcome suggestions about how to use the allocations to benefit our community

Road resurfacing

A number of roads in our area have been resurfaced recently. It is almost impossible for Surrey to decide which should receive priority, but it is a start (from a long list), with firm indication of others to follow. As an aside, please either let me know, or report direct to Surrey, any potholes or other road safety issues.

On the other side of the coin, Surrey decided to raise Council Tax by the maximum allowed of 5.99%. My proposal for a scheme which would have allowed a lower (or no) increase for those in the lower Council Tax bands was sadly ignored. Those on fixed or lower incomes will inevitably suffer. Those at the very top end could pay more if reports of a recently transferred footballer on a weekly wage of £600,000 are correct.

Finally, the result of the local parking review which started in 2016 has been announced, with implementation scheduled for April. If you have comments, good or bad, let me know, also if you have thoughts on other changes. We can now make changes annually. This will allow us to adjust existing arrangements, and to take into account new requirements e.g. due to new housing developments. It is not an easy task to cater for the latter, avoid creating rat runs, retain much-needed parking and at the same time consider the paramount issue of safety for pedestrians as well as road users.



Weston Green
School

A thriving independent
co-educational
day school for children
aged three to eleven

So much going on...



Visit us and see for yourself

Call us on **020 8398 2778** or visit **www.westongreenschool.org.uk**
to book a personalised tour with our Headteacher

Weston Green Road, Thames Ditton, KT7 0JN

Secret Gardens of Thames Ditton

– Can you help?



Caroline James & Andy Anderson looking for secret gardeners

Sometimes bright ideas just go together.

The hugely popular biennial Secret Gardens of Thames Ditton has for the past few years been a driving force behind the village's equally popular twinkling High Street Christmas Lights. The money raised from garden entrance tickets is used to offset their installation, maintenance and running costs.

Since spring 2012, when the late Russell Dunoon Duncan mooted the idea of opening village gardens to the public (including his own) to raise money for the first T D village Christmas lights the event has grown like bindweed in the border and now includes Secret Gardens in Weston Green every other year. The first TD Secret

Gardens event in June 2012 raised just over £2,000. The 2016 open day attracted nearly 400 people and bagged £2,691 for the lights and a contribution to the Garden of Remembrance opposite St Nicholas Church.

The Secret Gardens of Thames Ditton 2018 will take place on Sunday June 17 (Father's Day again) between 2pm and 5.30pm – *but only with your help!* Sadly, the great Gardener in the Sky has weeded out a few stalwarts, others have moved away, and the organisers of the events, Caroline James and Andy Anderson, both High Street residents, are now seeking new gardens to refresh the visitor experience and to ensure that the day goes ahead. So, what are we looking for?

It can't be said enough: we are NOT looking for Chelsea standards! If you are in Thames Ditton whether you have a prettily planted pocket handkerchief plot, a tasty vegetable area, a pond full of tadpoles or a rolling vista with a view of the Thames, all are welcome. Ticket sales are handled separately, the event is covered by Residents' Association insurance, and you can be as visible or invisible as you like – all our previous garden-owners have enjoyed the day hugely.

So don't be bashful and do please volunteer to open your garden this year. Remember this above all: if you overhear a visitor saying something like: "Well, I've lived in Thames Ditton all my life and I never knew THIS was here," congratulations – you are a Secret Gardener!

Contact us on 07979 672723 or carolinejames1@gmail.com

Caroline James & Andy Anderson



simon simpson

BA(Hons) MSc MAREBT BABCP UKCP MNRHP

Cognitive Behaviour Therapy
Clinical Hypnosis



Registered with Bupa
and all major insurance
companies

Expert, confidential treatment for:

- Panic
- Workplace Stress
- Low Self Esteem
- Insomnia
- OCD
- Depression
- Anxiety
- Irritable Bowel Syndrome
- Phobias
- Anger

clinics in Esher, Hampton Court and at The London Bridge Hospital
full details at: www.cbt-surrey.co.uk tel: 07801 450 477

FUNERAL DIRECTORS AND MEMORIAL STONEMASONS



THE FAMILY YOU CAN TURN TO...

Seven generations of our family have been helping and advising local families in their time of need. For over 230 years we have been providing funerals, both modest and traditional, with care and compassion.

ESHER:	78 High Street	01372 463903
EAST MOLESEY:	156 Walton Road	020 8941 1412
THAMES DITTON:	37 High Street	020 8398 4586

Lodge
BROTHERS 1780
the family you can turn to

www.lodgebrothers.co.uk



FIPA
FUNERAL
INSTITUTES
ASSOCIATION

ASK ABOUT OUR
PRE-PAYMENT
FUNERAL PLANS

Heathrow Consultation

– Have your say



In the autumn 2017 issue of Thames Ditton Today I wrote an article about Heathrow expansion and its possible impact on our local area. Expansion of the airport will affect Elmbridge in a number of ways. You can read the article on the Thames Ditton and Weston Green Residents Association website <http://residents-association.com/images/thamesdittontoday/autumn2017.pdf>

Heathrow Airport Limited has opened a public consultation which is running from 17 January to 28 March. There are two parts to this consultation:

- The first relates to the physical changes on the ground needed to build a new north west runway and operate an expanded airport. This includes where the new runway will be built, construction and service areas, and the changes to roads, (local and the M25).
- The second relates to the selection of principles that will be applied when designing the new airspace required for the expanded airport.

At this early stage, they are not consulting on future flight path options but are seeking guidance on the principles that should be applied to determine where the flight paths for landing and departing aircraft will be. This includes selection criteria for flight paths (urban versus rural), noise, the timing of night flights and managing air quality.

There are over 30 events being held throughout the consultation period where you will be able to talk to members of the project and pick up copies of the consultation materials, including response forms, though these can be completed online.



Nigel Haig-Brown

If you missed the event at Imber Court in early February there are others including one on Monday 12 March from 12-8pm at The Cecil Hepworth Playhouse, Hurst Grove, Walton, KT12 1AU. A complete list of all the showcase events can be found on the consultation web page listed below.

I would encourage all local residents to engage in the public consultation. You can find the consultation at www.heathrowconsultation.com

Nigel Haig-Brown

Hinchley Wood and Weston Green Residents' Association Councillor Nigel Haig-Brown is part of an Elmbridge Borough Council (EBC) task group set up to assess the impact of Heathrow expansion on the borough.

Concerned about the performance of your Personal Pension or Stocks & Shares ISA?

**knightjames**
Wealth Management

**A friendly, local
and professional
service**



Mortgages
Equity Release
Investments
Tax Planning
Commercial Insurance



Call: 0208 398 6677 – www.knightjames.com

6 Station Road, Thames Ditton, Surrey, KT7 0NR

If you're having an outdoor
event call us & let us
put you.....

**Undercover
Event Tents**

We specialise in offering a wide range of
marquee solutions to suit any social or
commercial event in south east london
& surrey

Phone: 0208 398 7219
Mobile: 07864 585 181
email: undercover.events@yahoo.co.uk
web: undercovereventtents.co.uk



Men in Sheds, shoulder to shoulder



Men in Sheds meet at the shed at Thames Ditton Centre for the Community

Men don't talk face to face – they talk shoulder to shoulder. This slogan captures the *raison d'être* of the 'Men in Sheds' initiative, which originated in Australia and is now an international phenomena. One of these is on your doorstep, in a shed located on a small, welcoming patio at the back of the Thames Ditton Centre for the Community, opposite the library.

Stuart Baldwin, the volunteer group leader, said: *"We are all about encouraging older men to come out and meet new people, work with other blokes, learn new skills and make beautiful things that benefit the community."*

There are more than ten regular members, plus a handful that come and go. New members are welcomed by the general banter

and sense of humour of the group and soon feel at home, especially when they are found something practical to do. Members do not need any previous knowledge or special skills.

Stuart described Chris's experience: *"Chris was a complete beginner, and after coming here for a while he is now able to tackle quite complicated tasks – it didn't take him long to move from making a simple bird box to independently completing a photographic table for his wife and working with Will and Mike on a bee hive."*

A couple of members have a disability. Sid went along to the shed in his wheelchair wondering what he could contribute. The 'shedders' built him a bench where he could work at his own height and helped him to find



From left Mike, Chris, Will and their beehive

tasks that he felt comfortable with. Stuart explained: *“There is always a job in the shed in which you can become the expert.”* Sid lives in a care home and had not been out for eight weeks when he discovered the shed. *“I love coming here – it gives me back a purpose in life and I enjoy the company of the other blokes,”* he said.

Men come to the shed for different reasons – for example Simon and Chris wanted to increase their skills. Mike, who is retired, likes having a reason to get up in the morning and working as part of a team. Adrian enjoys the feel-good factor of helping the local community. Sid added: *“It’s tribal – you get a sense of belonging, like you do if you belonged to any club where you share common interests.”*

The shed was set up by Elmbridge Borough Council when it identified a gap in the provision of older men’s services. The council continues to fund the maintenance of the shed, but the shedders supplement this by making and selling things.

They were recently commissioned to produce a ‘bug house’ for Walton charities which was the 2017 centrepiece of their garden at the Hampton Court Flower Show, which won a silver medal. They also welcome commissions from private individuals as long as it is an item that can be made in the shed and the individual is responsible for collecting it – for example they recently made a magazine rack and some raised planters. The shed is also interested in donations of unwanted tools in good condition.

The shed is open on Monday and Thursday between 9.30am and 3pm – whether you have your own shed or not, why not drop in and give it a go?

Contact the Centre Manager on 0208 398 5921 or email thamesdittoncentre@elmbridge.gov.uk Alternatively visit www.elmbridge.gov.uk/centres and search for ‘Men in Sheds’.

Julie Royce



Hampton Court Flower Show Bug House

Flooding in Thames Ditton

– An update



Those of you who have signed up for Flood Alerts with the Environment Agency (EA) for the mainland, not Thames Ditton Island, will have received two alerts in January. In practice, in neither case was there any threat to Thames Ditton. The graph below shows the highest river levels reached.

Apart from clearly showing the effects of high tides at Thames Ditton, the graph shows that the maximum river level was well below the 5.7m which the EA believes may cause minor flooding. The alert was probably triggered by a lower threshold set elsewhere in the relatively large Flood Alert area. In practice, the flood water starts flooding Alexandra Road, the lowest point apart from some gardens, when the level reaches around 6.2m.

The next stage is a Flood Warning which is issued when the level reaches 6.66m – by which time several properties will already

be flooded. A good explanation of the Flood Alert and Warning system is posted on the Residents' Association web site www.residents-association.com

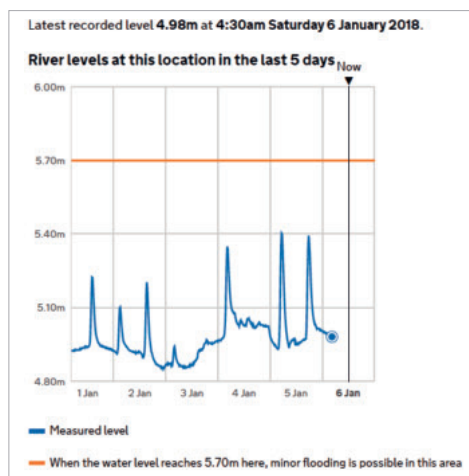
If you are interested in receiving Flood Alerts and Warnings, it is suggested that you sign up for those for Thames Ditton Island – where the Alert is issued at 5.7m and the warning at 6.35m. The easiest way to sign up for Flood Alerts and Warnings is to call Floodline on 0345 988 1188, option 3.

The flood group is working towards developing a much more detailed information system using data supplied by the EA. This will indicate when sections of individual roads are expected to flood so that cars can be moved and any property prevention measures can be installed.

River Thames Scheme

We have been told informally by the Environment Agency that they now have a completed outline design for the scheme. They have identified funding sources of over £354 million which is more than half the funding required for construction of the scheme. Over the next 12 months the agencies will be concentrating on securing the remaining funding and aim to submit the planning application in 2019.

The report of the latest phase of work will be available on the EA web site and the results of the updated modelling will be reflected in the Flood Risk plans on their web site www.gov.uk/riverthamesscheme You can also sign up to the newsletter: <http://ow.ly/SzdH30d7F3h>



River levels 6 January

Community Resilience Measures

Consultants are working on two potential schemes for Community Resilience Measures, one permanent and one temporary. We have been assured that any proposed solutions will be discussed with residents and we will update you with the details of these as they are made available. You can find out more about Community Resilience Measures at <https://www.gov.uk/government/news/community-resilience-measures-june-2017-river-thames-scheme>

Multi-Agency Meeting

A meeting was held with the authorities last October to discuss questions raised at last year's open meetings. EA, Surrey CC, Elmbridge BC and Thames Water representatives were present together with some members of the Flood Group. A summary of the questions and the

answers received is available as a News Item on the RA web site <https://residents-association.com>

If anyone has any comments or is interested in our flood group, please get in touch on aathompson_uk@yahoo.co.uk

Tony Thompson
Convener – Flooding Sub Committee

River Rythe

The Environment Agency has a new free flood warning service for areas at risk of flooding from the River Rythe which passes through Esher, Hinchley Wood and Thames Ditton. Sign up at <https://www.gov.uk/sign-up-for-flood-warnings>

ELAINE AT ESHER

**Nutritional Therapist
(Dip NT)**

Specialising in **WEIGHT LOSS**
and **FOOD ADDICTION**.

Free yourself from food
addiction for once and for all.

Contact Elaine for expert
advice and support.

www.freefromfoodaddiction.co.uk
Ph: 0743 489 4668
else.davis@gmail.com

Woodham and Sons Ltd

Landscape and Fencing contractors

Est. 1998

Member of
Cheekatrade.com
www.cheekatrade.com



Fencing;

- Closeboard
- Panels
- Metal/Chainlink
- Palisade
- Fence repairs
- Gates

Landscaping;

- Drives
- Patios
- Artificial grass
- Turfing
- Planting
- Decking

Small enough to care, Big enough to cope

020 8391 2006

info@woodhamandsons.co.uk

Dying for a drink?



'I never expected to end up as an alcoholic'

How did you get on with your January New Year's resolutions? Was cutting down or giving up alcohol one of them? Did you by any chance try Sober October or take notice of Alcohol Awareness month in November? These are the times when those who occasionally overindulge will rein in their drinking or smoking for a month or so. Others will promise to cut down for good.

However, every day in thousands of households across the UK people are struggling with a real drink problem. An estimated 10.8 million adults are drinking at a level likely to pose a risk to their health and of those, 1.6 million have some level of alcohol dependency. Harmful drinking costs society £21 billion. (Public Health England source)

According to Alcoholics Anonymous, people turning up for their first AA meeting are not sleeping on park benches, are not homeless and are usually employed. Outwardly they appear to have normal

lives. Many appear to be very successful, with good jobs, a family and a mortgage. They get themselves up, they go to work, they come home - and then they drink.

Sometimes they drink at work, at lunchtimes perhaps, or maybe they have begun to hide their drinking from their colleagues and their families. They may have become aware themselves that it might be a bit of a problem. Mostly they don't think it's a problem at all. They may dismiss criticism of their behaviour, or they may not be truthful about their levels of alcohol consumption.

A lot of them feel unwell a lot of the time, a constant low hum of a hangover that gets louder now and again when they have *really* hit the bottle. They don't know what will happen when they pick up a drink. Sometimes they can control it, sometimes they can't. For some, it has already passed way beyond any form of control.



'I had a drink problem that was getting hard to disguise'

As one AA member, John, explained: *I never expected to end up as an alcoholic, I don't think anyone does. I thought going to AA would be just meeting another load of drunks; I could do that just as easily in my local pub. I wondered if my boss knew. But then I think everyone who knew me knew I actually had a drink problem. It was getting harder and harder to disguise. I just couldn't stop drinking; I couldn't remember a day that had gone by without me having a drink. It wasn't always like that, it built up slowly and then seemed to gather momentum. The only days I didn't drink were if I was literally too ill with flu or something to get up and go and get booze.*

Alcoholics Anonymous UK has been supporting people who want to stop drinking for the last 70 years. Unlike treatment centres, AA meetings are free and available to anyone. No waiting lists, no referrals. Their meetings are everywhere, in every city and nearly every town across the UK.

Far from the preconceived idea of a problem drinker these AA meetings include men and women of all backgrounds for whom the nightly drink became a nightmare. Using a 12-step programme and the support of others who have stayed sober, they help the drinker stop - and stay stopped. Then they offer help and support to live a happy and contented life free from a dependence on alcohol.

I had this idea that an AA meeting would be full of people who slept on park benches. In fact my first encounter looked more like a PTA meeting!

Julie

John continued: *As I wake up today, 12 years later, still sober, remembering where I was last night, what I said and who I was with, I am very grateful. I didn't stop drinking straight after my first AA meeting*

but I did stop eventually. My wife smiles at me today and my kids have spent most of their lives with a sober and happy Dad. I still go to AA to pass on what was given to me freely. I know that if people hadn't kept going to AA then there wouldn't have been anyone with any sobriety to help me.

I'm still not quite sure why or how AA works as well as it does, but I know it worked for me and I have seen it work for many others. I think what I got from that first meeting was hope. I could see others had got better.

As spelled out in its Preamble, which is read out before every meeting, "Alcoholics Anonymous is a fellowship of men and women who share their experience, strength and hope with each other that they may solve their common problem and help others to recover from alcoholism. The only requirement for membership is a desire to stop drinking. There are no dues or fees for A.A. membership... Our primary purpose is to stay sober and help other alcoholics to achieve sobriety."

AA has a national free helpline where first time callers are offered help by an AA volunteer who will share their experience on recovery and offer to put them in touch with an AA member who will take them to their first meeting. Some people find details of their local meetings from the AA website or other sources and come along on their own.

If drink is costing you more than just money then there is help available today.

Do you want help with a drinking problem? Contact AA in complete confidence.

Call: 0800 9177 650

Email: help@aamail.org

Visit: www.alcoholics-anonymous.org.uk

To find your nearest meetings and get the help you need.

St. Nicholas needs you – Please be a Friend



Evening at St Nicholas by Anthony Bowater

The hub of village life in Thames Ditton for nearly 900 years, our Grade 1 listed church building needs your support. Care and protect your heritage –please become a Friend of St. Nicholas.

St Nicholas' Church has launched a Friends group to help preserve the wonderful historic church building at the heart of our community. You do not need to be a churchgoer to become a Friend; it's a group for people who care about the heritage of our village. As well as being an active place of worship, the church, a Grade I Listed building, has a whole range of historic features of interest. So, if you care about the character of our village and want to help to keep an important and historic building at the heart of village life, become a Friend.

Visitors from all over the world come to Thames Ditton's Grade I Listed church to see its historic links, which predate even

the building of Hampton Court Palace. St Nicholas church dates from Norman times and over the centuries generations of families have worshipped, been baptised, married or held funerals here.

Caring for a landmark building is a tremendously expensive undertaking. Over the past few years, with the help of generous benefactors and huge support from the local community, a Restoration Appeal to members of the congregation and community has raised more than £200,000 to ensure that the building is in good condition. The parish is committed to keep it that way.

All residents can help by becoming a regular Friend, by making flexible donations, or simply a one-off amount. Every donation, whatever the amount, is important and will help to secure the future of St Nicholas' Church building and the historic graveyard. Further information can be found on the parish website <http://www.stnicholaschurch.org.uk> or by picking up a leaflet in the church

Amanda Eccleston, Florian Traub



New lights in the church by Andrew Eccleston



Your Residents' Association

Notification to residents of key planning applications

Web site maintained as resource for all residents

High Street Christmas Fair & continued funding for High Street Christmas Trees & lights

Secret Gardens of Weston Green

Supported residents' objections to inappropriate development

Supported Thames Ditton High Street retailers

Detailed application for funding to restore Milbourne Pond

Supported parents seeking long-term solution to secondary schools crisis

Traveller incursion measures completed

Continuing pressure for maintenance to prevent flooding at Esher station, and to resolve other long-standing flooding problems

Boomerang bags to make Thames Ditton a plastic bag free zone

Regular Open Meetings to engage with the community on important topics

Two new blue plaques highlighting village history

Historic names for new roads at former Imber Trading Estate

Setting up of Flood Action Committee

Constant vigilance
Conservation
Green Belt in



tion in Action 2017-2018



ance to protect
n Areas and
n Local Plan

RA Councillors represent
interests of local residents to
GP surgeries and the CCG
on health services

5000 copies of Thames Ditton
Today distributed quarterly in
Thames Ditton, Weston Green
and Molesey

RA with Lib Dems
control EBC administration
for 2nd year

Pushed for lighting under the
bridge at Esher station

Supported public consultation
on parking restrictions in East
Molesey, Weston Green and
Thames Ditton

Planted spring bulbs,
maintained flower beds
and Fountain roundabout,
supported Thames Ditton in
Bloom at the railway station
and beyond

Active Litter Picking
Groups in Weston Green
and Thames Ditton

Monthly Farmers' Markets

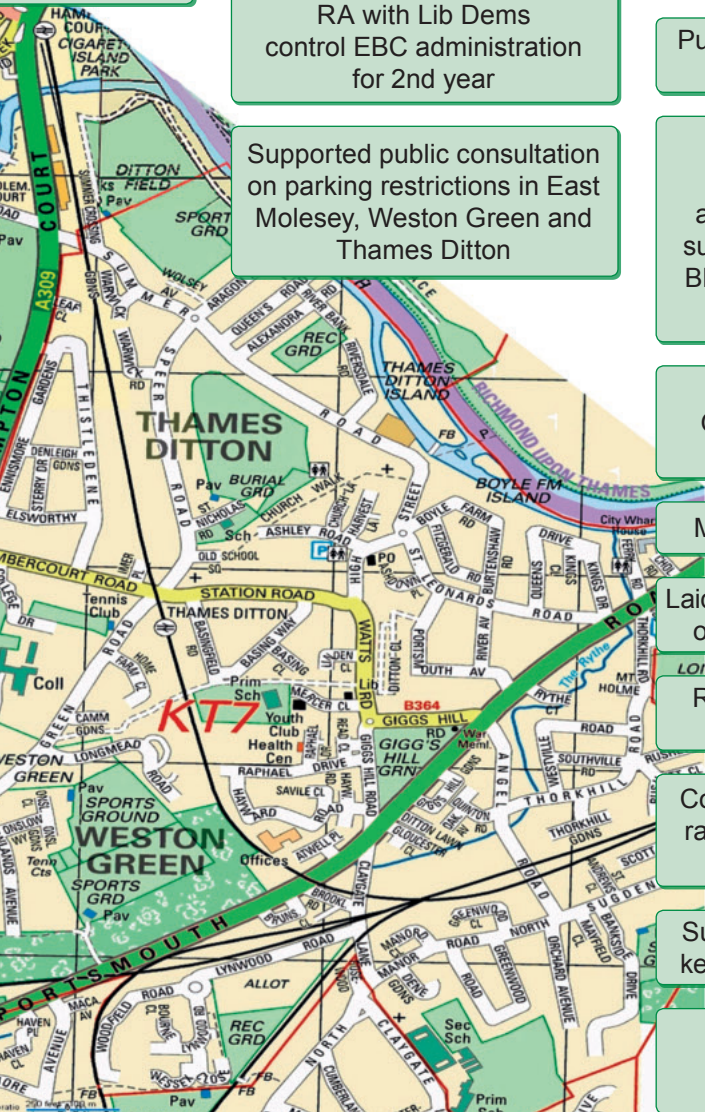
Laid wreaths on War Memorials
on Remembrance Sunday

Regular monitoring of new
path on Ditton Common

Continuing support and fund
raising for services for NHS
patients at Emberbrook

Successfully campaigned to
keep Molesey Hospital open

Supported residents
with waste collection
service problems



Janet Turner: Leisure and Culture

Alongside local ward responsibilities, some of our Residents Association Councillors have additional roles working closely with departmental staff at Elmbridge Borough Council (EBC) in the running of council business.

Our Hinchley Wood and Weston Green Councillor Janet Turner is portfolio holder for Leisure and Culture. With an annual budget for 2017-2018 of £4.7m and a department of only 37 staff, its remit includes: Parks & Recreation, Sports & Leisure, Commons, Promoting Healthy Lifestyles, Arts & Culture, Museums, Royston Pike Lectures, Public Halls and Cemeteries.

Although it's Councillors that decide the budget and direction of her portfolio it's the staff in the Leisure and Culture department that execute it. They have to make sure there are activities happening locally that encourage residents to participate in a better quality of life. Janet has provided us with an update on current projects.

Parks and Recreation: This includes children's play areas, paddling pools and splash areas, parks and public open spaces where sport is played and also public tennis courts. The aim is to keep these public recreation areas managed and maintained. For example, Giggs Hill Green is used by the general public all-year-round but needs to be in good condition so that Thames Ditton Cricket Club can play there during the cricket season. The cricket club has a lease from EBC. There are a number of other sites in the borough where similar arrangements exist which allows the public to use the green areas throughout the



Green Spaces Maintenance

year and sports clubs to operate during the appropriate season.

Last summer saw a new tennis court initiative with an online booking service for court hire at very reasonable rates. Maintaining the courts is expensive and this initiative, which is part funded by the Lawn Tennis Association, will enable EBC to upgrade courts so that future generations can enjoy tennis.

Sport and Leisure: Janet also oversees existing, and the development of, sports facilities including the Excel Leisure Centre at Walton. Janet takes a special pride in the Leisure Centre as it was built under her management when she last held the portfolio between 1995-2000.

Adjacent to Excel Leisure Centre is the new Sports Hub, which consists of a new 8 lane running floodlit athletics track with field sports area in the centre of the track, a 3G floodlit synthetic turf main stadia football pitch, a 3G floodlit synthetic turf second pitch, and 1 full size grass pitch, with the potential for up to 4 mini pitches. There is also a pavilion with a dual aspect covered spectator stand. The Hub is home to 2 football clubs, Walton Casuals

and Hersham and Walton FC, and Walton Athletics Club.

Investment in sports is not confined to young people. EBC has a healthy walks programme. There are walks taking place every day of the year, and cycle rides once or twice a week. Both programmes are led by volunteers, and Janet leads some of the rides with her husband Roy.

Elmbridge Sports Council (funded by EBC offering a £10,000 grant) provides financial support for local clubs and individuals. The grants awarded annually in the autumn are to support training, travel and equipment but not buildings. The awards are open to any sport. Surbiton Hockey Club has been a successful applicant and some of the women's 2016 Olympic Hockey team have benefitted too. More information on grants, walks, and cycle rides can be found on the EBC website www.elmbridge.gov.uk

Commons: The portfolio also includes our commons which cover about 50% of Elmbridge. Janet works with the Countryside Consultative Group at EBC who keep a watchful eye on the maintenance of the commons. This group is made up of EBC councillors, staff, and representatives of outside bodies with countryside interests.

The work on the commons is carried out by the team of Commons Rangers with the help of a volunteer team who help with clearance of scrub and up keep of paths. Outside contractors are also used for the felling of trees, under the guidance of the Countryside team. Janet has a great love for the countryside and attends all country meetings. She is also the Councils representative on The Lower Mole Countryside Group (LMCG). This is a group set up by Surrey County Council supporting countryside management. It also relies on volunteers who amongst other things lay and maintain country paths and walkways to a very high standard, making the Surrey countryside accessible to all. The LMCG is funded by a number of boroughs including Elmbridge, Epsom and Ewell, Kingston, Reigate Banstead and Mole Valley.

Shout Play Scheme: The Leisure Department runs a SHOUT Play Scheme for children in school holidays, to help working parents, it's run in several schools and halls throughout the borough. The scheme covers a wide variety of activities for young children aged 5-13 years and lasts all day. Children engage in a range of activities such as sports courses including tennis, arts and crafts, dance, drama, woodland adventures and countryside education courses, depending



Sports Hub athletic tracks and pavilion



Esher Commons - The Ledges

on the holiday period. The Easter dates are 3-6 April and 9-13 April 2018 and there is an online booking system on the EBC website from February.

Allotments: Some of the allotments are on land owned by EBC. Each site is given a lease and is self maintained to a very high standard. Twice a year representatives from each allotment group meet with council officers and Janet, to talk about any help they need and to share ideas. This is a very earthy and jolly group and a lot of ground is covered in a short space of time.

Cemeteries: Within the Leisure Department there is also a team who look after our cemeteries. This is a difficult role, one which requires staff to deal with members of the public who need a lot of help and compassion at a time of loss of a loved one. The staff also oversee the maintenance and upkeep of open and closed cemeteries and grave yards with the help of custodians and contractors who look after the grounds.

Encroachment by Travellers: Alongside upkeep of the commons the department

also has to deal with illegal traveller encroachment on to commons and open spaces. Travellers view these pieces of land as where traditionally they were always allowed to stay. Moving them on from this land is complicated, more complicated than from private land as there is a legal due process that has to be followed and this is what takes time. The council is obliged to assess the health and welfare of the children, including schooling, which is why it can take up to two weeks to obtain a court order. Sadly, the court orders are site specific so groups are often able to move to another site nearby. However, it is hoped that new legislation will enable the council to deal with this more swiftly by issuing fines and prohibiting their return. Another way to deal with this is to discourage travellers from using the countryside and polluting the surrounding area by making access difficult. This can be seen at Weston Green where the council has put boundary posts and built banks around the perimeter. Travellers can be charged with criminal

damage if they damage property and the public can support the council by providing photographs and car registration numbers, but they must be willing to give evidence in court.

Aside from travellers, fly tipping is also a menace. When EBC Rangers remove the rubbish they check it for clues as to its origin. If they find any evidence and can trace it back to a householder, they will be fined. The advice is “be selective” about who you use to dispose of rubbish, the legitimate trader will have a license and will be willing to show it to you. EBC also has a list of licensed contractors. Sadly, although it's EBC that picks up the cost of managing fly tipping, it's Surrey County Council that is responsible for the local refuse tips and any charges for their use.

Arts and Culture: This is an area that EBC is very keen to expand and it already supports a wide range of arts and culture from choirs to theatrical performances, music, drama, arts and dance. It does so by helping with expertise and support with promotion of events. EBC has a dedicated Arts Officer who is experienced in all forms

of culture and can advise clubs, bands, groups and individuals about where to apply for funding.

EBC also has links to a number of venues throughout the borough. The Vera Fletcher Hall is now run by a trust but EBC gave an initial grant to help build and re-launch the venue. The Playhouse in Walton (formerly the Walton Hop) and the boiler house to the local film studio, is owned by EBC. The Council is looking to replace or improve the facility. So watch this space for more news.

Unfortunately, Elmbridge no longer has a static museum but there are various display cases in the Civic Centre and libraries around the borough. The displays are changed regularly with interesting themes to coincide with historical and local events. The museum team also hire out artefact boxes for schools, which is very popular. If you wish to see any artefacts from the museum they can be viewed online. There is also a service to trace historical data.

If you would like any further information on any Culture and Leisure activities at EBC contact www.elmbridge.gov.uk

Janet Turner and Sandra Dennis



Elmbridge School Choirs Festival 2017



PERSONAL
PROFESSIONAL
POSITIVE

H J C

HIGHER VALUES

Thames Ditton
020 8398 3707
thamesditton@hjc.co.uk

Lettings
020 8390 9290
lettings@hjc.co.uk

Surbiton
020 8390 0404
surbiton@hjc.co.uk

Sad farewell to the Rocking Reverend



Rocking them in the aisles Rev. Phillip Johnson (second from right) and parishioners

In July 2011 I vividly remember attending the collation and induction of the Rev. Phillip Thomas Johnson, the new vicar at Weston Green Church. Phillip, with his charm and quick wit, captured our hearts immediately. Little did we realise what an extraordinary young man he was and what a huge impact he would have on our community. He quickly embraced the area, its people, and immediately understood what made Weston Green ‘tick’. He started networking, had a clear vision, and worked out his strategy. He was a vicar on a mission! What Phillip has achieved in just over six years is astounding.

One of his extraordinary talents is his ability to raise money and tap into various funds and grants. One fund-raising event stands out in my mind. In 2015 Phillip decided that the church car park needed attention. He had always had an ambition to walk the 75 mile route of the Santiago de Compostela pilgrimage in Northern Spain;

this was now to become a fund-raising event. The journey was gruelling, the route was far hillier than anticipated and walking from 6am – 6pm, often on his own, proved an enormous challenge. The daily blogs and photographs were a testament of just how difficult the journey was. However, he raised over £10,500 and the car park was duly resurfaced.

Phillip also initiated and encouraged many arts projects. A great many talented young people have benefitted from tuition and mentoring from professional artists and have progressed their understanding and knowledge. Many will remember the outstanding Youth Film Project and the many arts exhibitions.

There have been a number of extremely professional plays and musicals, which could easily have been transferred to the London stage, such as their quality. Phillip’s background as a producer in the professional



Archbishop Rowan Williams with Phillip and associate vicar Rev. Jackie Richardson

theatre world has been put to good use – he is an extraordinary actor, singer, musician, ventriloquist, comedian...and vicar!

In September 2016 the Rt Hon Dr Rowan Williams led our morning service – what a memorable experience. Phillip (of course) denies having had any influence on the Archbishop's visit. In May 2017 Phillip was made the Area Dean – what an accolade... no 'ordinary' vicar this!

Numerous activities are now held in the church. There is a Bereavement Café, a monthly Wednesday Lunch club for the retired – the list is endless. We have a very active Youth Worker and an outstanding Associate Vicar, The Rev. Jackie Richardson.

Residents will have their own personal

memories recalling the way Phillip has helped them over the years – in times of sorrow, stress, anxiety and personal loss, as well as the more joyous occasions. I will always remember the way he guided our daughter and husband-to-be in the lead-up to their wedding and the way he made the service so very special. He did not hesitate when I asked him if he would be my Chaplain during my mayoral year and he was a great support throughout.

When the congregation recently learnt that Phillip was leaving to become the vicar of the Benefice of Malvern Link we were stunned – the sadness in church was palpable. We are all very sad to see Phillip leave but we wish him every success and happiness in the future.

I recall that, during one of Phillip's recent extraordinary sermons, he talked about memory and how it fades. He glibly said that he could envisage someone in the future trying to recall the name of a vicar but could only remember that he was 'the bloke who resurfaced the car park'. Make no mistake Phillip – we will never forget your name and you will be remembered for a myriad of reasons...not just the car park!

Tannia Shipley, RA Councillor
Hinchley Wood & Weston Green

All Saints Weston lunch club

December 29, 2017 was the fourth anniversary of the very first Christmas/New Year lunch for retired people in the Parish – devised originally for those on their own in the rather 'down' time between Christmas and the New Year.

The first lunch attracted 15 guests, plus helpers, but the numbers were double that in December. Everyone enjoyed the festive table and two of Father Christmas's rather mature Elves dispensing gifts!

Retired couples as well as single people are

welcome, on the last Wednesday of every month apart from August. Next two dates are March 28 and April 25. Often there is a speaker invited. Lunches are held in the church hall at the side of All Saints church, Chestnut Avenue, from 11.30am, serving at 12 noon. There is no formal charge, but donations are welcome.

For further information please call Val Atkinson, on 020 8398 1116, or email valantoni.atkinson@gmail.com You will be very welcome.

Probus – Friendship, fellowship & fun in retirement



A convivial Probus get together

Those who have recently retired may be blessing their new-found freedom. On the other hand, they may be bored, listless and at a loss to see what happens in a world without work, professional challenges and the banter of the workplace.

That's where Probus comes in. Described as "the best export the UK has ever had" by an Australian member, Probus is all about friendship, fellowship and fun in retirement. The group provides retirees with the opportunity to meet like-minded people and stay healthy and active through social interaction with other retirees. Probus opens the door to new experiences and friendships.

In 1965 three professional businessmen facing retirement came up with the idea of forming a luncheon club to encourage fellowship with other retirees. One of them, a Rotarian, put it to his local club which took up the idea and it spread to other UK Rotary clubs.

The first named PROBUS club (*PRO*fessional/*BUS*iness) was formed in

1966. Rotary International understood the value of such an organisation for men aged over 60 and encouraged Rotary Clubs worldwide to support them.

There are currently 4,000 clubs worldwide. Surrey has 34 male Clubs and a few Ladies Clubs are beginning to emerge. Each Club is autonomous and promotes fellowship between members by arranging a wide variety of activities, e.g. presentations by excellent speakers, cultural visits, walks, golf, bridge, table tennis, bowls and so on. Partners also join in some of these activities.

The local Probus club is Hinchley Wood and the Dittons which meets every third Tuesday in the Esher Suite at Imber Court, Ember Lane, at 10.30am. An attraction of the meeting is a reasonably priced optional lunch in the Metropolitan restaurant.

The next meeting on April 17 is entitled "The Chairman's social lunch". On May 29 Dominic Raab MP will be our guest. Then on June 19 our speaker will be Brian Scovell, former Daily Mail sports reporter, author, biographer and now a freelance journalist. Monica Weller will be the speaker on July 17.



To express interest as a visitor or as a member, call Edmund on 0208 398 3581.

Website: <https://hwandtdprobus.weebly.com>

Eric Austin – Chairman,
Hinchley Wood & The Dittons Probus Club.



TJBathrooms

FOR EVERYTHING IN LUXURY
BATHROOMS & SHOWERS

Open: Mon to Fri 8am-5pm Sat 9.30am-3pm
121 Anyards Road, Cobham, Surrey, KT11 2LJ
(Car park to rear of building)

Tel: 01932 866471/868523 | tjbathrooms@hotmail.com
www.tjbathrooms.co.uk

FREE DESIGN & PLANNING SERVICE



Lock burglars out...



Make sure that burglars cannot reach your deadlock key

Do you have a “routine” for making your home safe at night, or when you go on holiday? The problem is that most people don’t and as a result, they leave themselves and their families open to unscrupulous people waiting to take advantage. Take your front door, for example. Most people just close the door behind them and rely on the “Yale-type” latch lock to click closed and keep their property safe. In fact this is not acceptable to most insurance companies that insist that property owners should also have a separate deadlock which is used as a back-up to the latchlock.

Even if you have taken the precaution of having a secondary deadlock fitted to your main access door, you still have to be aware that it is important to take the key out of the lock at night to prevent someone opening the door by breaking a small window

next to the latchlock and reaching down to the deadlock to gain entry.

Remembering to take the key out of the lock after locking applies also to a back or side door, where burglars, having made the decision to break your window to reach the key in the lock on the inside, will most likely be discouraged from proceeding if they find that the key is not there.

This also affects their mode of escape, because they will always be mindful of how quickly they can get away should they be discovered. And if they have to climb through a broken glass in the door they might think again about committing the crime in the first place.

Tony Nockles

Neighbourhood Watch Coordinator
East Molesey



Claremont Fan Court School

An independent co-educational school for pupils aged 2½ to 18 years

Open Morning

Whole School - 10.00am-12.30pm

Introductory talk at 10.00am

Saturday 10 March

For further information, tel **01372 473624** or
email **info@claremont.surrey.sch.uk**



Nursery
Pre-Prep
Prep
Senior
Sixth Form

The Speers and the Sandys

– a Dynasty of Taxmen. Part 4



In the preceding episode of this saga, I looked at the several thorny ways in which the second William Speer had irritated, or acted contrary to the interests of, other significant figures in the parish. While I do not think he did anything illegal in the pursuit of his own interests, there are convincing signs that he acted in an uncompromising manner, exploited privileged tactical positions to acquire manors and patronages, threw his weight around, and on occasion sailed pretty close to the wind.

It is left for you to ponder whether revenge was a factor when local bigwigs instigated (via the Bishop) the prosecution of his son the Rev. Wilfred Speer for persistent drunkenness on duty. Concerning Wilfred, by most accounts a gentle fellow who before his appointment at St. Nicholas appears to have been sober, what do you think might have driven him to drink? Perhaps a controlling father, the death of his mother Mary two years after Wilfred had taken up his post here, the concurrent death of a child and also of one of his sisters, along with his doubtless uncomfortable position chairing meetings of a Vestry with his father opposed to the plans of other parish heavyweights, all contributed to his recourse to the bottle.

The Sandys of Poldark country

I'll now introduce the Sandys, one of whom was to marry William's fourth daughter, and beget Hannibal Sandys, the third generation so named. Hannibal III eventually came into the Speer inheritance with its very substantial landholdings in the parish and beyond, and to satisfy William's will changed his name to Hannibal Speer when he took up residence in what we know as the Old Manor

House, Thames Ditton. His brother Edward Frederick Sandys was also to be a significant Thames Ditton resident in the latter half of the nineteenth century.

The Sandys family came from Poldark country - Helston in Cornwall. There were several generations of them there, with a thread of Hannibals and of Sampsons - evidently a penchant for masculine heroism. Sampson Sandys born about 1690 married Phillipa Thomas of St. Keverne at the tiny hamlet of Gunwalloe. Their third son was William Sandys. William, described as "Gentleman and of the attorneys of his Majesty's Court of Kings Bench," married Mary Johns of Bath in 1757. They produced, in order, William (1759-1829), Sampson (1761 - 1784), Mary (1762-1838), and Hannibal Sandys born 1763 and baptised 8 May 1764 at Helston.



Poldark country

Hannibal - I'm going to refer to him as Hannibal I - was apprenticed to his father William's law firm in Helston in July 1779. In August 1786 Hannibal I married Anne Hill at Helston. Hannibal moved to London as a practising attorney. 1786 Sun Insurance

records show Hannibal Sandys, attorney at law, with premises at 5 Crane Court, Fleet Street - a courtyard that had been distinguished by housing the Royal Society from 1710 - 1780. He paid Land Tax from 1787 for these premises (listed as Red Lyon Passage) off Fetter Lane. Hannibal and Anne had seven children, of whom four survived infancy. The second son born on 12 January 1794 was likewise christened Hannibal and I shall refer to him as Hannibal II.

The Sandys and the Speers

The first evidence of the Sandys association with William Speer also comes from Land Tax and poll records which in 1801 show Hannibal I as a residential tenant at 11 Great Queen Street in one of William Speer's houses there. William Speer I, the owner, lived a few doors away when in London, as sometimes did his son the second William Speer. There is no indication among Hannibal I's many legal activities, of which there are traces in

various documents at the National Archives, that William Speer was ever a client.

In 1794 we find Hannibal II involved as attorney for a Colonel Passingham, accused of forgery of a will concerning an estate in Merioneth. He retained strong business connections in the West Country. By an enclosure Act of George III, Hannibal II was appointed sole Commissioner for allotting parts of Helston Borough known as the Helston Downs, the Black Downs, and the White Downs, which he carried out in 1818. There were many enclosure acts that were cruelly exploitative of the ordinary citizens with rights of common, but this does not appear to be one of them. Hannibal ensured that the rights to several areas traditionally used for fuel were preserved for the common people, and was given freedom of the borough of Helston on January 3rd, 1820. Four years later we find Hannibal involved in the sale of Crackington Manor in Cornwall with all rights including lead mining.



Crane Court

Hannibal I was a steward of the Law Association "for the benefit of widows and families of professional men in the metropolis and the vicinity". He donated to the Scilly Isles relief fund. He was also a keen hunter, annually issued with a game licence. In most of these cases his Queen Street address was given. Hannibal I supported parliamentary reform - the enlargement of suffrage, and the ballot - voting for Romilly, a lawyer and a supporter of reformer Sir Francis Burdett, in 1818. I note that William Speer II also supported Burdett. But

Hannibal evidently found the pro-labour free marketeer Joseph Hume a radical step too far: he favoured another legal figure, Lord Robert Henley, and was involved with his support committee. An item in the Royal Cornwall Gazette of Truro in August 1826 reported the chairman of the rival support committee for Hume complaining in Parliament of Hannibal that “He knew Mr Hume was a religious man, and that he who called him an Atheist was as bad or worse than the hired assassin who stabbed in the dark [cries of ‘name him!'] His name is Hannibal Sandys, a lawyer, and he should be sent to Siberia. He is, it is said, a Barrister...”

Meanwhile we find Hannibal I’s eldest son William Sandys (named after Hannibal’s father) being articled along with Hannibal II to his father’s firm after graduating from Trinity College, Cambridge, and both eventually became partners along with two other lawyers. Their younger brother Richard Hill Sandys (born October 1801) also went up to Trinity, in 1819, from Cheam School, and was a freshman that year with Wilfred Speer who had been educated at Westminster School. You may imagine Richard and Wilfred, socialising during vacations in London, being perhaps the vehicle for introducing Hannibal II to Wilfred’s sister Cecilia Speer.

Hannibal Sandys II and Cecilia married at St. Margarets Westminster on 5 December 1825, by licence. He was aged 31 and she 27. Their son Hannibal Sandys III (our Thames Ditton Hannibal) was born a year later at Brompton on 6 December 1826, being baptised on 12 January 1827. It thus appears that William Speer II made the Speer house at Brompton available to the couple. A daughter, Mary Katherine, followed in 1829 then another son, Edward Frederick Sandys, on 21 December 1832.

Disaster strikes

For some time it appears that the law practice established by Hannibal I, in which his sons William Sandys and Hannibal II, having been articled, were soon partners, had not been doing well. A partnership of attorneys-at-law and solicitors between them and two others was dissolved at the turn of 1825, and a new firm, Sandys and Sons, was established at the Crane Court premises. This in turn was dissolved in May 1833 and a year later Hannibal I and II and William Sandys were made bankrupt. In the bankruptcy court they were described somewhat disparagingly as “scriveners, dealers and chapmen.” That is, legal clerks who prepared documents for court - notaries public - and sometimes acted as deposit-takers and money-lenders, rather than as “attorneys-at-law and solicitors” which was their description when Sandys and Sons was established.

Hannibal Sandys II died a year after the bankruptcy, on 10 May 1835, and was buried on 18 May at St. Margarets, Westminster. I confess that I have not attempted to get hold of a death certificate for Hannibal II, but one wonders whether it was a direct or indirect consequence of the bankruptcy or even by his own hand. His eldest son, Hannibal Sandys III, was eight years old.

The elder Hannibal I carried on to try to repay creditors and gain discharge, on his own account. His address changed over the years from 11 Great Queen Street through Hyde Park to the Edgware Road, Sloane Street and at the end, 28 Upper Eaton Street Pimlico, punctuated by a short stay as a prisoner for debt in the Queen’s Prison, Southwark at some time between 1842 when the prison was so renamed, and 30 May 1845 when he was brought from the prison to the Insolvent Debtors’ court for discharge to be considered.

wordpress developer

The Set Up are seeking an additional PHP developer to join our digital design agency in Thames Ditton.

Freelance/full time opportunities.

- Solid grounding in PHP programming
- Experience developing WordPress sites
- Good communication skills

Contact Richard on 020 8972 9700
hello@thesetupdesign.com

34 High Street
Thames Ditton
Surrey KT7 0RY

See our online portfolio at:
www.thesetupdesign.com



Lee McCarthy Electrical Services

All types of electrical work undertaken.

No job too big or too small.

- ▶ Full/partial re-wires
- ▶ Testing and inspection

Contact us now for a free quote
07950 763 775

leemccarthyelectricalservices@gmail.com



DOWN TO EARTH



27 Church Walk
Thames Ditton
Surrey
KT7 ONP

Phone: 020-8398-7219

Mobile: 07867-590-450

E-mail: downtoearth2008@live.co.uk

A family run, local gardening service

GARDEN MAINTENANCE, CLEARANCE & DESIGN AT AFFORDABLE RATES

Gardens can get out of hand very quickly, sometimes it can be hard to keep on top of it all year round.

We can provide total garden clearances', regular garden maintenance, garden design, fencing & paving, to help create.....(and keep) the garden you've always wanted.

Why not give us a call or drop us an e-mail to see what we can do for you?

Hannibal Sandys I died aged 84 at Upper Eaton Street in early October 1847.

His son William Sandys born 1792, a noted amateur antiquary, enthusiastic cello player, and author of various works from “A History of Freemasonry” through “Specimens of Cornish Dialect” to Sandys and Forster’s “History of the Violin” (1864), managed to survive the bankruptcy and later formed his own law firm in 1861, dying on 18 February 1874. Twice married, he had two daughters born in 1819 and 1822.

Dynasty of Taxmen restored

Given that Hannibal I and Hannibal II’s brother William had continuing difficulties of their own in bankruptcy, we may deduce that the support of Hannibal Sandys III, his brother Edward Frederick and sister Mary Katherine and their mother Cecilia devolved upon their maternal grandfather, William Speer the younger, in his retirement in Thames Ditton until William Speer died in 1844.

In case you were thinking that with three generations of Sandys lawyers, I had wandered some way off the title of this series, the influence and leverage of William Speer at HM Treasury, like

his own father having risen to the very senior post of Senior Clerk (just about equivalent to Permanent Secretary today), would appear to have been exercised to secure civil service places for his grandsons. For like him, Hannibal Sandys III and Edward Frederick Sandys both became Revenue Clerks. The dynasty of taxmen was thus continued.

Hannibal III spent many years posted with the Revenue in Ireland from at least 1847 to 1866. Edward seems to have been based in London. The 1861 census has them both at the house of their aunt, Maria Speer, on Weston Green Road, although as their mother Cecilia was still living - she died 18 August 1863 - and Hannibal was listed as serving in Ireland, it may well be simply that they were visiting Maria at the taking of the census.

Next time, I’ll cover the aftermath of William Speer’s death, the troubled succession of his son Wilfred’s family, the eventual inheritance of the Speer lands and fortune by Hannibal and later the progeny of his brother, and their involvement in Thames Ditton.

Keith Evetts

shop **signs** van **signs** window **signs**
for sale **signs** sticker **signs** frosting
warning **signs** banner **signs** plaques
display **signs** posters **and** more...

flyingcolours call 020 8398 1770

Solution to the Winter Crossword



B	E	M	U	S	E	D	W	E	L	C	O	M	E
A	U	T	I	E	E	N	X						
K	A	N	G	A	R	O	O	S	G	E	T	U	P
U	S	R	G	T	E	A	E						
	T	H	R	E	E	C	O	R	N	E	R	E	D
D	E				N	N	D	I	I				
E	N	R	I	C	H	E	S	R	A	G	O	U	T
T			O	S	E	R							I
E	N	C	A	M	P	E	N	D	Y	M	I	O	N
R	H	E	T	V						L		G	
G	R	A	N	D	N	A	T	I	O	N	A	L	
E	G	I	R	S	E	E	S						S
N	O	R	M	A	S	T	A	R	L	I	G	H	T
T	I	N	U	G	I	A	U						
S	I	N	U	S	E	S	E	P	S	I	L	O	N

Congratulations to the senders of the first three correct entries opened in the shuffle. Each wins a £5 voucher to spend in local shops.

Tom Eddy
46 Grove Way
KT10 8HL

Susan Howarth
104 Summer Road
KT7 0QP

Mr Mahadeva
44 Thistledene
KT7 0YJ

Alan Greenwood & Sons

Independent Family Funeral Directors



Latest Jaguar or Mercedes Hearses and Limousines
Quality Service 24 hours a day
Home visit arrangements
Golden Charter Pre-paid funeral plans
We will not be beaten on price



1 The High Street
Claygate
KT10 0JG

57 Fleece Road,
Long Ditton
KT6 5JR

13 Molesey Road
Hersham
KT12 4RN

259 Ewell Road
Surbiton
KT6 7AA

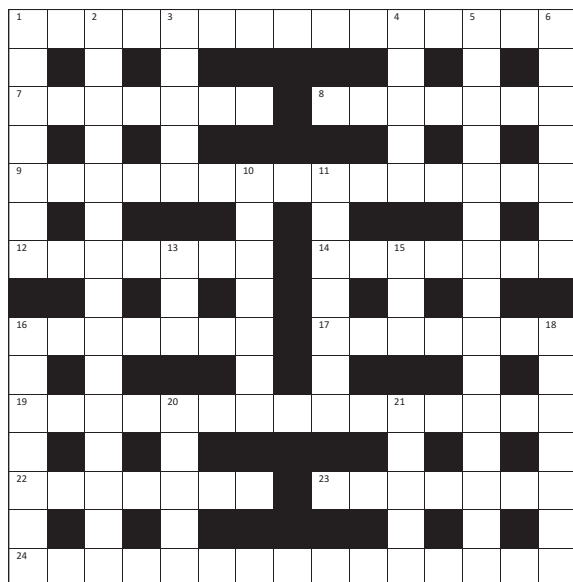
01372 377 377 020 8398 0012 01932 260 046 020 8399 4455

Visit Our Website for Full Details of Our Services and to View Our Obituaries

www.alangreenwoodfunerals.com

Spring Crossword

by Michael Jackson



The first three correct entries randomly opened after the closing date of 2 May 2018 will win a £5 voucher to spend in local shops.

Please send the completed puzzle (or photocopy) enclosing your name and address, with the envelope clearly marked ‘Crossword Competition’ to:

Thames Ditton Today
Crossword Competition
24 High Street
Thames Ditton
KT7 0RY

ACROSS CLUES

1. Booking overnight; then honey on toast? (3.3.9)
7. American who introduced roll film to colour photography (7)
8. Scot’s hanging purse (7)
9. Drat! Sand is into a testing of criteria against rules (15)
12. Butter and cheese are made in these (7)
14. Award is the official name for an Oscar (7)
16. WW2 fighter: challenging (7)
17. Steep frozen glacier (7)
19. Heard on television and radio, sometimes annoying (10.5)
22. A bow-shaped display of colours (7)
23. Assistance given to people in need (7)
24. Novelist author of Tarka the Otter (5.10)

DOWN CLUES

1. The quality of mercy is twice... (7)
2. Sid is fast, a tonic, but disappointed when replaced (15)
3. Wanderer (5)
4. Icelandic coin (5)
5. High-ranked RAF Officers (3.4.8)
6. Temporary holding of property (7)
10. Dish of rice, cheese etc (7)
11. Mendelssohn’s Fourth (7)
13. Highest mountain in Crete (3)
15. Mimic monkey (3)
16. Kerr, British actress, Prophetess and judge of Israel (7)
18. A reading desk (7)
20. Logan of BBC Sports (5)
21. Mediterranean island (5)

SERVICES, CLUBS, SOCIETIES AND GROUPS

SERVICES

Cheer (Concern and Help for East Elmbridge Retired)	Mark Michelmore	01372 879321
Dittons & Weston Green NeighbourCare	Frankie Bell	07790 472993
Elmbridge Borough Council Community Support Services		
Thames Ditton Centre for the community	Mon & Thurs	020 8398 5921
Thames Ditton Children's Centre	Tues, Weds, Fri	020 8398 3772
Meals on Wheels, Community Transport, Dial-a-Ride, Alarm & Telecare services, Relief Carers	ask for service at central switchboard	01372 474552
Homesupport Elmbridge	Thomasina Breslin	01932 267128
Esher and District Stroke Club	Ann Pollock	020 8398 6132
Voluntary Action Elmbridge	Sally Dubery	01372 463587
Surrey Youth and Adult Education Service	Elmbridge Area	020 8979 8334

GROUPS

Girl Guiding in TD & WG	Mrs K Williams	020 8398 1300
1st Thames Ditton Brownies	Mrs. Bronach Hughes	020 8398 1628
3rd Thames Ditton Brownies	Deborah Daoud	020 8398 5521
2nd Thames Ditton Rainbows	Alexandra Lyall	07779 616463
1st Weston Green (All Saints) Scout Group	Carole Needham	07975 842423
1st Weston Green Guides (All Saints)	Mrs. Louise Lewis	020 8398 4843
2nd Thames Ditton Guides	Mrs. Bronach Hughes	020 8398 1628
1st Weston Green Brownies (All Saints)	Mrs K Williams	020 8398 1300
2nd Weston Green Brownies	Mrs J Epps	020 8395 0595
1st Weston Green Rainbows	Larisa Strickland	westongreenrainbows@gmail.com
4th Thames Ditton Ajax Sea Scouts	Alison Derrick	020 8398 0041
Dittons Scout Group	Aileen Widdowson	07783 449666
Coffee and chat (United Reformed Church)	Mrs. E. Barker	01372 467491
Emberbrook Trefoil Guild	Mary Bowen	020 8398 6857
Friends of Bushey and Home Parks	Jean Smith	020 8977 9391
Friends of Walsingham Care	Miss Valerie Chicken	020 8398 2932
Molesey and Dittons Neighbourhood Watch	Chairman: John Haberfield	020 8398 5256
Parents and Toddlers(St Nicholas church)	Information	020 8398 7211
Ripieno Choir	Nick Harris	020 8399 7231
Surrey Bell-ringers	Giles Andre	020 8979 1994

CLUBS

Albany Motor Yacht Club	Secretary	01784 466651
Arts and Heritage Club	Carol Butcher	01932 867511
Claygate Bridge Club	Hon. Secretary	020 8398 1710
Colets Health & Fitness	Giordano Orsini	020 8398 7108
Dittons Skiff and Punting Club	Hon Secretary	07710 139417
Dittons & Hinchley Wood Royal British Legion	Hon Secretary	020 8398 6263
Ember Players (Drama) Ember Sports Club	Elaine Sesemann	07801 943392
Ember Sports Club	Zenda Hedges	07717 304146
Ember Sports Club: Bowls	Sylvia Jones	01932 788701

Ember Sports Club: Croquet	Dr. David Cooke	01932 862841
Ember Sports Club: Tennis	Annabel Duncan	020 8786 6318
Esher Bowling Club	Roger Cooper	01372 468109
Esher Bridge Centre	Paul Whicker	01372 460157
Esher Camera Club	Billy Buchanan	020 8398 3169
Esher 41 and Ex-Round Tablers' Club	Dr. R. Tudor-Williams	020 8398 0108
Folk Dance Club	Pam Phillips	01372 373745
Hinchley Wood / Dittons PROBUS Club	Geoff Francis	01932 867771
Long Ditton Cricket Club	Nigel Hardy	020 8398 8361
Long Ditton Garden Club	Heather Harvey	020 8398 2642
Model Railway Society (Hampton Court)	Secretary	01932 241224
Mothers Union (All Saints)	Jill Cotter	020 8398 4598
Old Cranleigh Rugby Club	Tony Price	07801 837129
Old Cranleigh Hockey Club	Simon Marshall (Men)	07801 737695
	Helen Hawes (Ladies)	07771 557900
Probus Club, Hinchley Wood/Dittons	Edmund Woolley	020 8398 3581
River Club (BMYC)	David Walker	0870 460 3586
Rotary Club, Esher	Geoff Morris	01932 868454
Rubber Bridge TD Lawn Tennis Club	Val	020 8399 9972
Surbiton Croquet Club	Alec Thomas	020 8398 2391
Surbiton Golf Club	Secretary	0208 398 3101
Surbiton Hockey Club	Secretary	020 8398 2401
Thames Ditton Lawn Tennis Club	Chris Lewis	07770 562569
Thames Ditton & Esher Golf Club	Mark Rodbard	020 8398 1551
Thames Ditton Squash Club (Colets)	Dave Peck	020 8398 7108
Thames Ditton Cricket Club	Howard Frish (Secretary)	07947 561449

SOCIETIES AND ASSOCIATIONS

Ember Choral	Linda Bridges	020 8399 5402
Esher Recorded Music Society	Miss S. M. Garrat	020 8398 8541
Esher and Molesey Garden Society	Chris Walker (Sec)	0208 398 6651
Esher and District Amnesty International	Cherry Eddy (Campaigns)	0208398 4377
Hampton Court Way Allotment Association	Lettings: Piotr Hennig	020 8398 5358
Long Ditton Youth Club	Toni Izard	07749 633973
Lynwood Allotment Society	Gill Vickers	020 8398 4870
Molesey and District Antiques Society	Linda Lambert	020 8398 1476
NADFAS (Decorative & Fine Arts) Kingston	Mrs. Valerie Windsor	020 8549 9967
Oxshott & Cobham Music Society	Cherry Eddy (Membership)	0208 398 4377
	cherryeddy102@gmail.com	
Soroptimist International (Kingston District)	Secretary: Pat Harman	020 8390 3507
Thames Ditton Women's Institute (W.I.)	Secretary	020 8398 8615
Civil Service Pensioners' Alliance	Mrs Brenda Denby	0208 398 6054.

OTHER

Cancer Research UK	Mrs. Vivienne Harris	020 8398 6787
Elmbridge Fairtrade Network	Judy Porter	020 8398 6401
University of the Third Age (U3A)	Hon Sec Anne Brown	01932 881633
Vera Fletcher Hall	Lettings: Amelia Crafts	08456 528 529
	Membership: Sue Morris	020 8224 0980

Please contact the Editor to amend these listings

Events at the Vera Fletcher Hall

4 Embercourt Road, Thames Ditton

Spring 2018



DRAMA: FAGIN? Giles Shenton, who has delighted VFH audiences with *Old Herbaceous* and *My Dog's Got No Nose*, returns with his theatre company, *Kick To The Head*, to present new play **Fagin?** Who was Fagin? Was he the Fagin in Dickens' *Oliver Twist*? Was he the Fagin in *Oliver!* the musical? Was he based on a real life character? Join Fagin as he reviews his situation during his final night in prison before being hanged.

Saturday 3 March 7.30 pm Tickets £14.00

CHILDREN'S SHOW: ROBIN HOOD from ever popular Image Musical Theatre. Robin Hood is on a mission, but the evil Sheriff of Nottingham is desperate to stop him. Why? Join in and sing along as Robin and his band of swashbuckling merry men start robbing the rich to feed the poor. Children have the opportunity to participate in the singing and some will get to be part of the action on stage.

Saturday 10 March 2.30 pm Tickets £8.00



COMEDY DRAMA:

LADY BRACKNELL'S LEGACY

Written and performed by **James Pellow**
We welcome for the first time, professional actor, James Pellow with this enchanting piece. Devonia Rudge, self-styled "Grande Dame" of the English Stage and naturally cheerful Freddie Farnsworth reflect on what might have been. James plays both characters in this poignant and witty play.

Saturday 17th March 7.30 pm Tickets £13.00



CABARET: ANY OLD PLACE WITH YOU - an evening of Rodgers and Hart with Julie Ross



Acclaimed cabaret performer **Julie Ross** looks at the work of song writing team Rodgers and Hart and sheds light on their complex relationship which, despite their differences, lasted 24 years and produced some 500 songs.

Saturday 14 April 7.30 pm Tickets £13.00

MUSIC: Linden Wind Orchestra presents A POSTCARD HOME From Somerset to the beaches of Wales, the Linden Wind Orchestra in their annual Festival concert will be performing a jam-packed programme taking you to places from where you would love to send a postcard home.

Featuring Vaughan Williams *English Folk Song Suite*, Shostakovich *Folk Dances* and an exciting performance of *Year of the Dragon* by Phillip Sparke.

Saturday 12 May 7.30 pm Tickets £12.50

NEWS FLASH!

THE RETURN OF CHARLES COURT OPERA

Gilbert & Sullivan's *HMS PINAFORE*

Friday 15 June 7.30 pm Tickets £18

Further details on this show and the rest of the

Spring 2018 Season on website at

www.verafletcherhall.co.uk

Tickets may be booked online or postal reservations made on 084565 528 529



Antique Clock Restoration & Repair

Specialising in Grandfather, Dial,
Bracket and Carriage Clocks

Contact: Mark Rowe M.B.H.I
BADA Diploma. Member of the Watch &
Clockmakers Guild. West Dean Diploma.



Tel: 020 8605 0331

www.theclockgallery.co.uk

Additional Restoration services available
for Watches, Books, Ceramics and Fine Furniture.
Antique Clocks also bought and sold.

THAMES DITTON UNITED REFORMED CHURCH

Speer Road – close to
Thames Ditton station

Services at 10.45 on Sundays

Secretary: Mrs Linda Lambert

Tel: 020 8398 1476

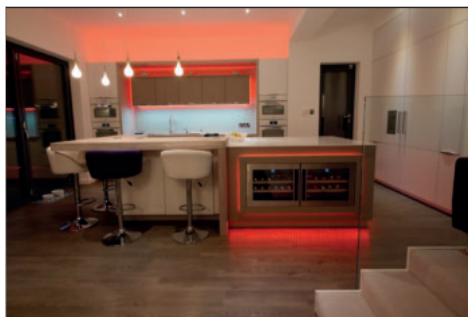
Email: lindanmlambert@aol.com

WELCOME TO ALL

Find us at <http://www.tdurc.org.uk>

Hall bookings
telephone:

020 8224 6396



MOORE
By Design

PROFESSIONAL KITCHEN DESIGN

The Hersham Centre, Hersham

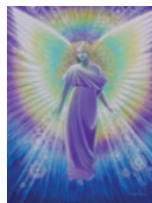
T: 01932 379076

New online gallery with 150 images...

www.moorebydesign.co.uk

Karen's Angels

The All Needs Carers



Karen's Angels is a friendly local care
company, operating in Surrey.

We provide professional 24 hour care, social
and personal care services.

We are very proud of the excellent reputation
we continue to achieve with our customers,
their families, local authorities, GP's and DN's.

For further information please contact

Karen/Andrea

02082247848

07760220604

THINKING OF A SPRINGTIME MOVE?



Speak to the property experts



Thames Ditton Residential Sales & Lettings 020 8398 2500

www.hawesandco.co.uk

Offices also at: SURBITON, NEW MALDEN, RAYNES PARK, WIMBLEDON BROADWAY & WIMBLEDON VILLAGE